

Ephrin-A2 Rabbit pAb

CatalogNo: YT1590

Key Features

Host Species

- Rabbit

Reactivity

- Human, Mouse

Applications

- WB, ELISA

MW

- 24kD (Observed)

Isotype

- IgG

Recommended Dilution Ratios

WB 1:500-1:2000

ELISA 1:20000

Not yet tested in other applications.

Storage

Storage*

-15°C to -25°C/1 year (Do not lower than -25°C)

Formulation

Liquid in PBS containing 50% glycerol, 0.5% BSA and 0.02% sodium azide.

Basic Information

Clonality

Polyclonal

Immunogen Information

Immunogen

The antiserum was produced against synthesized peptide derived from human EFNA2. AA range: 1-50

Specificity

Ephrin-A2 Polyclonal Antibody detects endogenous levels of Ephrin-A2 protein.

Target Information

Gene name EFNA2

Protein Name Ephrin-A2

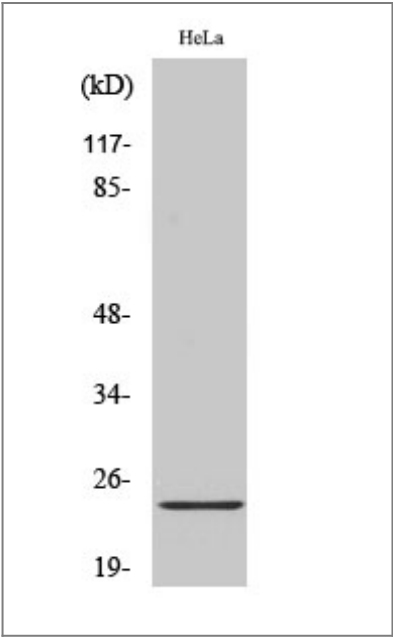
Organism	Gene ID	UniProt ID
Human	1943 ;	O43921 ;
Mouse	13637 ;	P52801 ;

Cellular Localization Cell membrane ; Lipid-anchor, GPI-anchor .

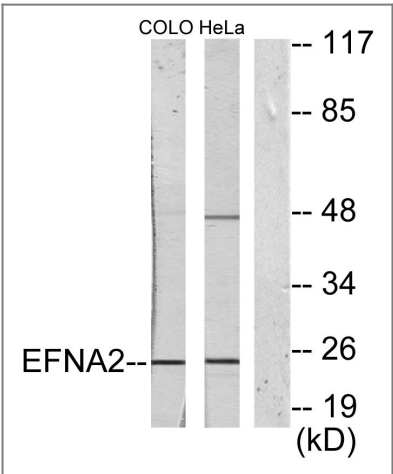
Tissue specificity Brain,

Function similarity:Belongs to the ephrin family.,subunit:Binds to the receptor tyrosine kinases EPHA3, EPHA4 and EPHA5.,

Validation Data



Western Blot analysis of various cells using Ephrin-A2 Polyclonal Antibody



Western blot analysis of lysates from HeLa and COLO205 cells, using EFNA2 Antibody. The lane on the right is blocked with the synthesized peptide.

| Contact information

Orders: order@immunoway.com
Support: tech@immunoway.com
Telephone: 877-594-3616 (Toll Free), 408-747-0185
Website: <http://www.immunoway.com>
Address: 2200 Ringwood Ave San Jose, CA 95131 USA



Please scan the QR code
to access additional
product information:
**Ephrin-A2 Rabbit
pAb**

For Research Use Only. Not for Use in Diagnostic Procedures.

[Antibody](#) | [ELISA Kits](#) | [Protein](#) | [Reagents](#)