

## Ephrin-A1 Rabbit pAb

CatalogNo: YT1589

### | Key Features

#### Host Species

- Rabbit

#### Reactivity

- Human, Mouse, Rat

#### Applications

- WB, IHC, IF, ELISA

#### MW

- 24kD (Observed)

#### Isotype

- IgG

### | Recommended Dilution Ratios

**WB 1:500-1:2000**

**IHC 1:100-1:300**

**IF 1:200-1:1000**

**ELISA 1:10000**

**Not yet tested in other applications.**

### | Storage

#### Storage\*

-15°C to -25°C/1 year (Do not lower than -25°C)

#### Formulation

Liquid in PBS containing 50% glycerol, 0.5% BSA and 0.02% sodium azide.

### | Basic Information

#### Clonality

Polyclonal

### | Immunogen Information

#### Immunogen

The antiserum was produced against synthesized peptide derived from human EFNA1. AA range: 66-115

#### Specificity

Ephrin-A1 Polyclonal Antibody detects endogenous levels of Ephrin-A1 protein.

## Target Information

**Gene name** EFNA1 EPLG1 LERK1 TNFAIP4

**Protein Name** Ephrin-A1

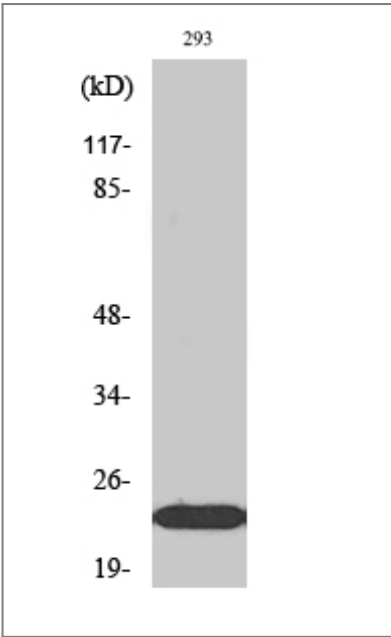
Organism	Gene ID	UniProt ID
Human	<a href="#">1942</a> ;	<a href="#">P20827</a> ;
Mouse	<a href="#">13636</a> ;	<a href="#">P52793</a> ;
Rat	<a href="#">94268</a> ;	<a href="#">P97553</a> ;

**Cellular Localization** Cell membrane ; Lipid-anchor, GPI-anchor .; [Ephrin-A1, secreted form]: Secreted .

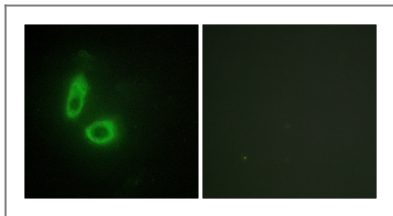
**Tissue specificity** Brain. Down-regulated in primary glioma tissues compared to the normal tissues. The soluble monomeric form is expressed in the glioblastoma multiforme (GBM) and breast cancer cells (at protein level).

**Function** induction:By TNF-alpha and interleukin-1 beta.,similarity:Belongs to the ephrin family.,subunit:Binds to the receptor tyrosine kinases EPHA2, EPHA4, EPHA5, EPHA6 and EPHA7. Also binds with low affinity to EPHA1.,

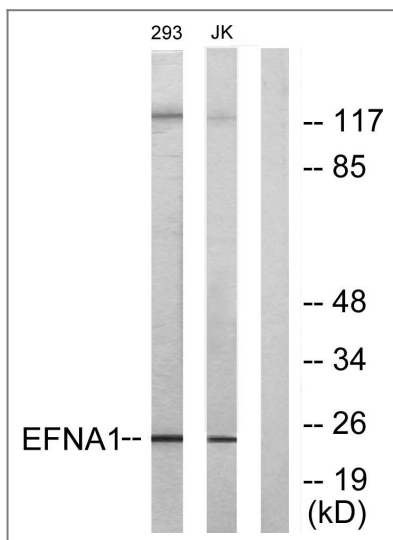
## Validation Data



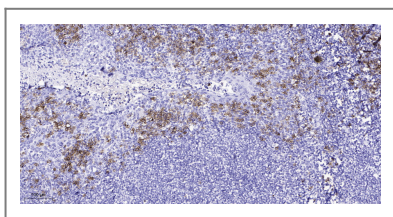
Western Blot analysis of Jurkat cells using Ephrin-A1 Polyclonal Antibody diluted at 1:2000



Immunofluorescence analysis of HeLa cells, using EFNA1 Antibody. The picture on the right is blocked with the synthesized peptide.



Western blot analysis of lysates from 293 and Jurkat cells, using EFNA1 Antibody. The lane on the right is blocked with the synthesized peptide.



Immunohistochemical analysis of paraffin-embedded human tonsil. 1, Antibody was diluted at 1:200(4° overnight). 2, Tris-EDTA,pH9.0 was used for antigen retrieval. 3,Secondary antibody was diluted at 1:200(room temperature, 45min).

## Contact information

Orders: [order@immunoway.com](mailto:order@immunoway.com)  
 Support: [tech@immunoway.com](mailto:tech@immunoway.com)  
 Telephone: 877-594-3616 (Toll Free), 408-747-0185  
 Website: <http://www.immunoway.com>  
 Address: 2200 Ringwood Ave San Jose, CA 95131 USA



Please scan the QR code to access additional product information:  
**Ephrin-A1 Rabbit pAb**

For Research Use Only. Not for Use in Diagnostic Procedures.

[Antibody](#) | [ELISA Kits](#) | [Protein](#) | [Reagents](#)