

EphA3 Rabbit pAb

CatalogNo: YT1578

Key Features

Host Species

- Rabbit

Reactivity

- Human, Mouse, Rat

Applications

- WB, ELISA

MW

- 120kD (Observed)

Isotype

- IgG

Storage

Storage* -15°C to -25°C/1 year (Do not lower than -25°C)

Formulation Liquid in PBS containing 50% glycerol, 0.5% BSA and 0.02% sodium azide.

Recommended Dilution Ratios

WB 1:500-1:2000

ELISA 1:40000

Not yet tested in other applications.

Basic Information

Clonality Polyclonal

Immunogen Information

Immunogen The antiserum was produced against synthesized peptide derived from human EPHA3. AA range: 831-880

Specificity EphA3 Polyclonal Antibody detects endogenous levels of EphA3 protein.

Target Information

Gene name EPHA3 ETK ETK1 HEK TYRO4

Protein Name Ephrin type-A receptor 3

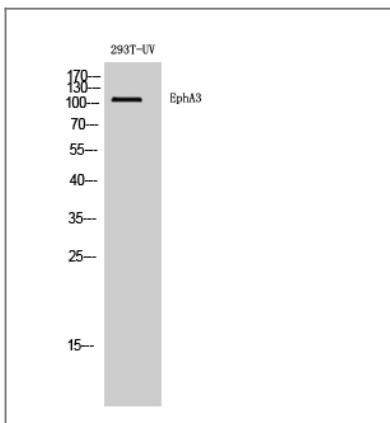
Organism	Gene ID	UniProt ID
Human	2042 ;	P29320 ;
Mouse		P29319 ;
Rat	29210 ;	O08680 ;

Cellular Localization [Isoform 1]: Cell membrane ; Single-pass type I membrane protein . ; [Isoform 2]: Secreted .

Tissue specificity Widely expressed. Highest level in placenta.

Function Catalytic activity:ATP + a [protein]-L-tyrosine = ADP + a [protein]-L-tyrosine phosphate.,Disease:Defects in EPHA3 may be a cause of colorectal cancer (CRC) [MIM:114500].,Function:Receptor for members of the ephrin-A family. Binds to ephrin-A2, -A3, -A4 and -A5. Could play a role in lymphoid function.,similarity:Belongs to the protein kinase superfamily. Tyr protein kinase family.,similarity:Belongs to the protein kinase superfamily. Tyr protein kinase family. Ephrin receptor subfamily.,similarity:Contains 1 protein kinase domain.,similarity:Contains 1 SAM (sterile alpha motif) domain.,similarity:Contains 2 fibronectin type-III domains.,tissue specificity:Widely expressed. Highest level in placenta.,

Validation Data



Western Blot analysis of 293T-UV cells using EphA3 Polyclonal Antibody diluted at 1:500

Contact information

Orders: order@immunoway.com
Support: tech@immunoway.com
Telephone: 877-594-3616 (Toll Free), 408-747-0185
Website: <http://www.immunoway.com>
Address: 2200 Ringwood Ave San Jose, CA 95131 USA



Please scan the QR code to access additional product information:
EphA3 Rabbit pAb

