

## EphA3 Rabbit pAb

CatalogNo: YT1577

### Key Features

#### Host Species

- Rabbit

#### Reactivity

- Human, Mouse, Rat

#### Applications

- WB, ELISA

#### MW

- 100kD (Observed)

#### Isotype

- IgG

### Recommended Dilution Ratios

**WB 1:500-1:2000**

**ELISA 1:10000**

**Not yet tested in other applications.**

### Storage

#### Storage\*

-15°C to -25°C/1 year (Do not lower than -25°C)

#### Formulation

Liquid in PBS containing 50% glycerol, 0.5% BSA and 0.02% sodium azide.

### Basic Information

#### Clonality

Polyclonal

### Immunogen Information

#### Immunogen

Synthesized peptide derived from EphA3 . at AA range: 540-620

#### Specificity

EphA3 Polyclonal Antibody detects endogenous levels of EphA3 protein.

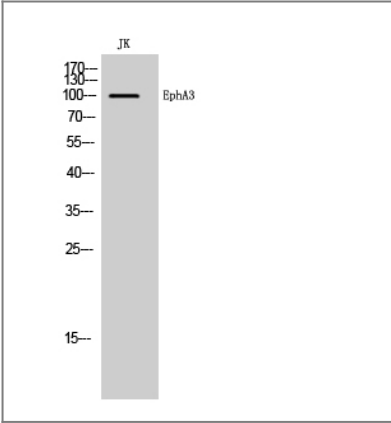
### Target Information

#### Gene name

EPHA3

<b>Protein Name</b>	Ephrin type-A receptor 3		
	<b>Organism</b>	<b>Gene ID</b>	<b>UniProt ID</b>
	Human	<a href="#">2042;</a>	<a href="#">P29320;</a>
	Mouse		<a href="#">P29319;</a>
	Rat	<a href="#">29210;</a>	<a href="#">O08680;</a>
<b>Cellular Localization</b>	[Isoform 1]: Cell membrane ; Single-pass type I membrane protein .; [Isoform 2]: Secreted .		
<b>Tissue specificity</b>	Widely expressed. Highest level in placenta.		
<b>Function</b>	Catalytic activity:ATP + a [protein]-L-tyrosine = ADP + a [protein]-L-tyrosine phosphate.,Disease:Defects in EPHA3 may be a cause of colorectal cancer (CRC) [MIM:114500].,Function:Receptor for members of the ephrin-A family. Binds to ephrin-A2, -A3, -A4 and -A5. Could play a role in lymphoid function.,similarity:Belongs to the protein kinase superfamily. Tyr protein kinase family.,similarity:Belongs to the protein kinase superfamily. Tyr protein kinase family. Ephrin receptor subfamily.,similarity:Contains 1 protein kinase domain.,similarity:Contains 1 SAM (sterile alpha motif) domain.,similarity:Contains 2 fibronectin type-III domains.,tissue specificity:Widely expressed. Highest level in placenta.,		

Validation Data



Western Blot analysis of JK cells using EphA3 Polyclonal Antibody

Contact information

Orders: order@immunoway.com  
 Support: tech@immunoway.com  
 Telephone: 877-594-3616 (Toll Free), 408-747-0185  
 Website: http://www.immunoway.com  
 Address: 2200 Ringwood Ave San Jose, CA 95131 USA



Please scan the QR code to access additional product information:  
**EphA3 Rabbit pAb**

