

Eos Rabbit pAb

CatalogNo: YT1565

Key Features

Host Species

- Rabbit

Reactivity

- Human, Mouse, Rat

Applications

- WB, ELISA

MW

- 64kD (Observed)

Isotype

- IgG

Recommended Dilution Ratios

WB 1:500-1:2000

ELISA 1:40000

Not yet tested in other applications.

Storage

Storage*

-15°C to -25°C/1 year (Do not lower than -25°C)

Formulation

Liquid in PBS containing 50% glycerol, 0.5% BSA and 0.02% sodium azide.

Basic Information

Clonality

Polyclonal

Immunogen Information

Immunogen

The antiserum was produced against synthesized peptide derived from human IKZF4. AA range: 471-520

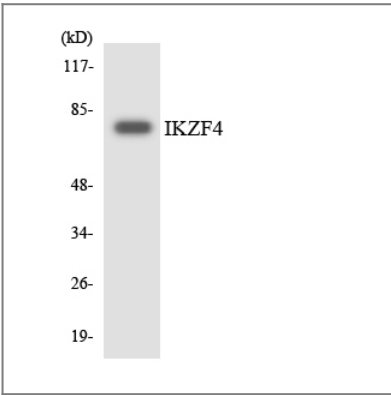
Specificity

Eos Polyclonal Antibody detects endogenous levels of Eos protein.

Target Information

Gene name	IKZF4		
Protein Name	Zinc finger protein Eos		
	Organism	Gene ID	UniProt ID
	Human	64375;	Q9H2S9;
	Mouse	22781;	Q8C208;
Cellular Localization	Nucleus .		
Tissue specificity	Highly expressed in skeletal muscle, low levels of expression in heart, thymus, kidney, liver, and spleen. Expressed in the hematopoietic cell lines MOLT-4, NALM-6 and K-562. Highly expressed in THP-1 and M-07e cell lines, which have characteristics of myeloid and early megakaryocytic cells respectively.		
Function	Domain:C-terminal zinc fingers mediate homodimerization.,Domain:The N-terminal zinc fingers are involved in sequence-specific DNA binding and heterotypic associations with other family members.,Function:DNA-binding protein that binds to the 5'GGGAATRCC-3' Ikaros-binding sequence. Transcriptional repressor. Interacts with SPI1 and MITF to repress transcription of the CTSK and ACP5 promoters via recruitment of corepressors SIN3A and CTBP2. May be involved in the development of central and peripheral nervous systems.,miscellaneous:'Eos' is a Greek word for rising sun.,similarity:Belongs to the Ikaros C2H2-type zinc-finger protein family.,similarity:Contains 6 C2H2-type zinc fingers.,subunit:Self-associates and interacts with other family members; IKZF1, IKZF2, IKZF3 AND IKZF5. Interacts with CTBP2, SPI1 and MITF.,tissue specificity:Highly expressed in skeletal muscle, low levels of expression in heart, thymus, kidney, liver, and spleen. Expressed in the hematopoietic cell lines MOLT-4, NALM-6 and K562. Highly expressed in THP-1 and Mo7e-IL3 cell lines, which have characteristics of myeloid and early megakaryocytic cells respectively.,		

| Validation Data



Western blot analysis of the lysates from HeLa cells using IKZF4 antibody.

| Contact information

Orders: order@immunoway.com
Support: tech@immunoway.com
Telephone: 877-594-3616 (Toll Free), 408-747-0185
Website: <http://www.immunoway.com>
Address: 2200 Ringwood Ave San Jose, CA 95131 USA



Please scan the QR code
to access additional
product information:
Eos Rabbit pAb

For Research Use Only. Not for Use in Diagnostic Procedures.

[Antibody](#) | [ELISA Kits](#) | [Protein](#) | [Reagents](#)