

Elongin A1 Rabbit pAb

CatalogNo: YT1532

Key Features

Host Species

- Rabbit

Reactivity

- Human, Mouse, Rat

Applications

- WB, IHC, IF, ELISA

MW

- 87kD (Observed)

Isotype

- IgG

Recommended Dilution Ratios

WB 1:500-1:2000

IHC 1:100-1:300

ELISA 1:5000

IF 1:50-200

Storage

Storage* -15°C to -25°C/1 year (Do not lower than -25°C)

Formulation Liquid in PBS containing 50% glycerol, 0.5% BSA and 0.02% sodium azide.

Basic Information

Clonality Polyclonal

Immunogen Information

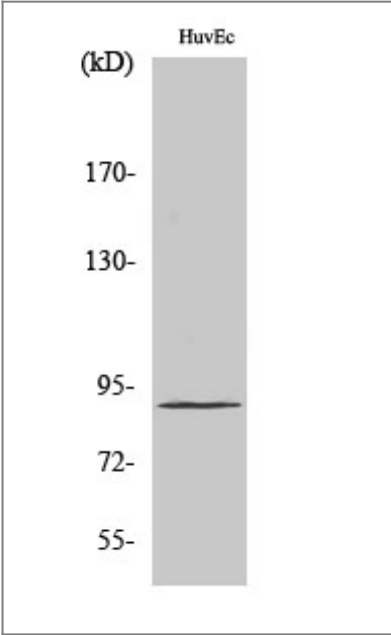
Immunogen The antiserum was produced against synthesized peptide derived from human TCEB3. AA range:131-180

Specificity Elongin A1 Polyclonal Antibody detects endogenous levels of Elongin A1 protein.

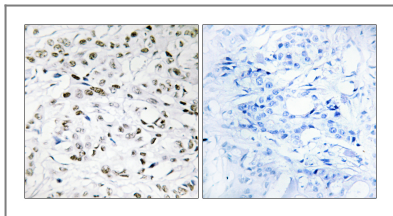
Target Information

Gene name	TCEB3		
Protein Name	Transcription elongation factor B polypeptide 3		
	Organism	Gene ID	UniProt ID
	Human	6924 ;	Q14241 ;
	Mouse	27224 ;	Q8CB77 ;
	Rat		Q63187 ;
Cellular Localization	Nucleus .		
Tissue specificity	Epithelium,Heart,Lung,Umbilical vein,		
Function	Domain:The elongin BC complex binding domain is also known as BC-box with the consensus [APST]-L-x(3)-C-x(3)-[AILV].,Function:SIII, also known as elongin, is a general transcription elongation factor that increases the RNA polymerase II transcription elongation past template-encoded arresting sites. Subunit A is transcriptionally active and its transcription activity is strongly enhanced by binding to the dimeric complex of the SIII regulatory subunits B and C (elongin BC complex).,similarity:Contains 1 F-box domain.,similarity:Contains 1 TFIIS N-terminal domain.,subunit:Heterotrimer of an A (A1, A2 or A3), B and C subunit. The C subunit mediates the binding of the elongin BC complex to subunit A.,		

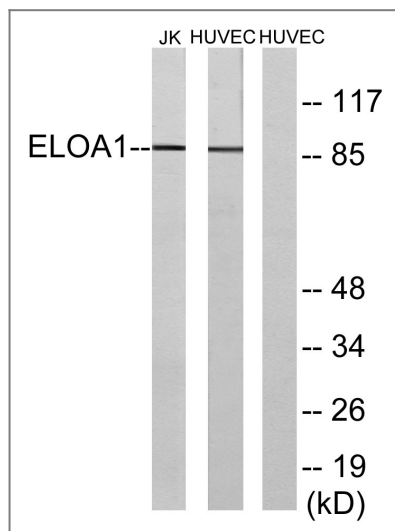
Validation Data



Western Blot analysis of various cells using Elongin A1 Polyclonal Antibody



Immunohistochemistry analysis of paraffin-embedded human breast carcinoma, using ELOA1 Antibody. The picture on the right is blocked with the synthesized peptide.



Western blot analysis of lysates from HUVEC cells and Jurkat cells, using ELOA1 Antibody. The lane on the right is blocked with the synthesized peptide.

Contact information

Orders: order@immunoway.com
 Support: tech@immunoway.com
 Telephone: 877-594-3616 (Toll Free), 408-747-0185
 Website: <http://www.immunoway.com>
 Address: 2200 Ringwood Ave San Jose, CA 95131 USA



Please scan the QR code to access additional product information:
Elongin A1 Rabbit pAb

For Research Use Only. Not for Use in Diagnostic Procedures.

[Antibody](#) | [ELISA Kits](#) | [Protein](#) | [Reagents](#)