

Elf-5 Rabbit pAb

CatalogNo: YT1525

| Key Features

Host Species

- Rabbit

Reactivity

- Human, Mouse

Applications

- WB, IF, ELISA

MW

- 31kD (Observed)

Isotype

- IgG

| Recommended Dilution Ratios

WB 1:500-1:2000

IF 1:200-1:1000

ELISA 1:20000

Not yet tested in other applications.

| Storage

Storage*

-15°C to -25°C/1 year (Do not lower than -25°C)

Formulation

Liquid in PBS containing 50% glycerol, 0.5% BSA and 0.02% sodium azide.

| Basic Information

Clonality

Polyclonal

| Immunogen Information

Immunogen

The antiserum was produced against synthesized peptide derived from human ELF5. AA range: 191-240

Specificity

Elf-5 Polyclonal Antibody detects endogenous levels of Elf-5 protein.

| Target Information

Gene name ELF5

Protein Name ETS-related transcription factor Elf-5

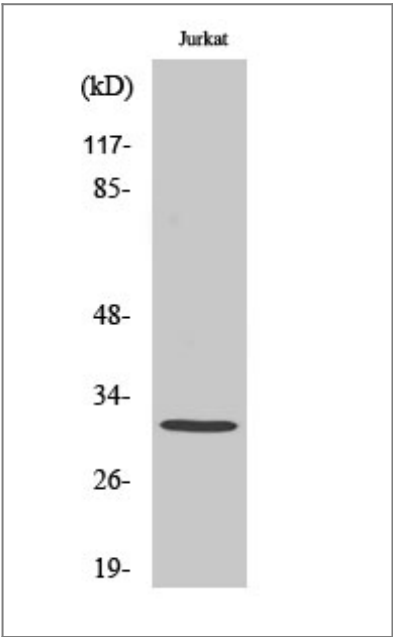
Organism	Gene ID	UniProt ID
Human	2001 ;	Q9UKW6 ;
Mouse	13711 ;	Q8VDK3 ;

Cellular Localization Nucleus .

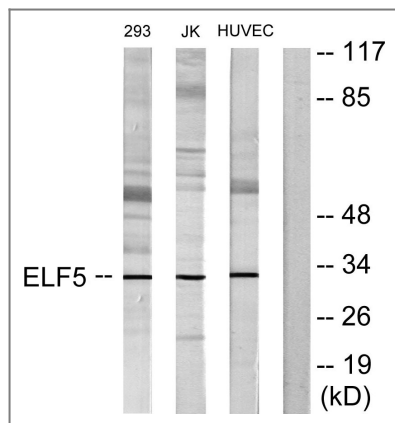
Tissue specificity Expressed exclusively in tissues with a high content of epithelial cells. Highly expressed in salivary gland, mammary gland, kidney and prostate. Weakly expressed in placenta and lung. Isoform 1 and isoform 2 are differentially expressed in different tissues. In the kidney, only isoform 1 was expressed, while prostate expressed both isoforms, with levels of isoform 2 being higher. Expression is up-regulated during keratinocyte differentiation. Several epithelial carcinoma cell lines showed lack of expression.

Function Domain:The PNT domain acts as a transcriptional activator.,Function:Transcriptionally activator that may play a role in regulating the later stages of keratinocytes terminal differentiation. Isoform 2 binds to DNA sequences containing the consensus nucleotide core sequence GGA[AT]. Transcriptionally activates SPRR2A and the parotid gland-specific PSP promoters.,similarity:Belongs to the ETS family.,similarity:Contains 1 ETS DNA-binding domain.,similarity:Contains 1 PNT (pointed) domain.,tissue specificity:Expressed exclusively in tissues with a high content of epithelial cells. Highly expressed in salivary gland, mammary gland, kidney and prostate. Weakly expressed in placenta and lung. Isoform 1 and isoform 2 are differentially expressed in different tissues. In the kidney, only isoform 1 was expressed, while prostate expressed both isoforms, with levels of isoform 2 being higher. Expression is up-regulated during keratinocyte differentiation. Several epithelial carcinoma cell lines showed lack of expression.,

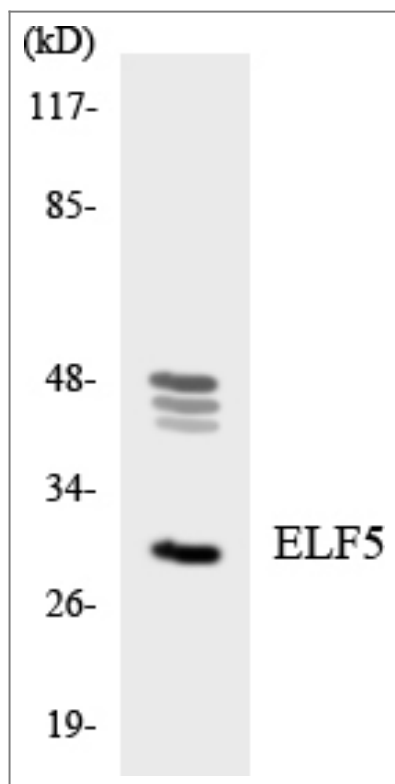
| Validation Data



Western Blot analysis of various cells using Elf-5 Polyclonal Antibody cells nucleus extracted by Minute TM Cytoplasmic and Nuclear Fractionation kit (SC-003, Invent biotech, MN, USA).



Western blot analysis of lysates from Jurkat, 293, and HUVEC cells, using ELF5 Antibody. The lane on the right is blocked with the synthesized peptide.



Western blot analysis of the lysates from HT-29 cells using ELF5 antibody.

Contact information

Orders: order@immunoway.com
 Support: tech@immunoway.com
 Telephone: 877-594-3616 (Toll Free), 408-747-0185
 Website: <http://www.immunoway.com>
 Address: 2200 Ringwood Ave San Jose, CA 95131 USA



Please scan the QR code
 to access additional
 product information:
Elf-5 Rabbit pAb