

Elf-4 Rabbit pAb

CatalogNo: YT1524

| Key Features

Host Species

- Rabbit

Reactivity

- Human, Mouse

Applications

- WB, ELISA

MW

- 70kD (Observed)

Isotype

- IgG

| Recommended Dilution Ratios

WB 1:500-1:2000

ELISA 1:10000

Not yet tested in other applications.

| Storage

Storage*

-15°C to -25°C/1 year (Do not lower than -25°C)

Formulation

Liquid in PBS containing 50% glycerol, 0.5% BSA and 0.02% sodium azide.

| Basic Information

Clonality

Polyclonal

| Immunogen Information

Immunogen

The antiserum was produced against synthesized peptide derived from human ELF4. AA range: 178-227

Specificity

Elf-4 Polyclonal Antibody detects endogenous levels of Elf-4 protein.

| Target Information

Gene name ELF4

Protein Name ETS-related transcription factor Elf-4

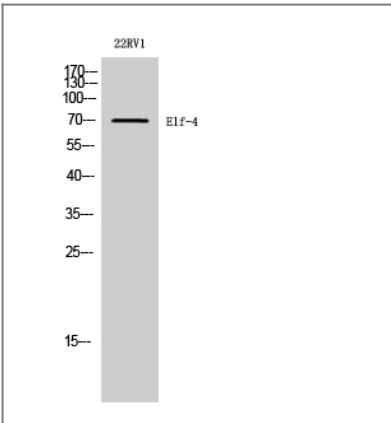
Organism	Gene ID	UniProt ID
Human	2000;	Q99607;
Mouse	56501;	Q9Z2U4;

Cellular Localization Nucleus, PML body . Accumulation into PML nuclear bodies is mediated by PML.

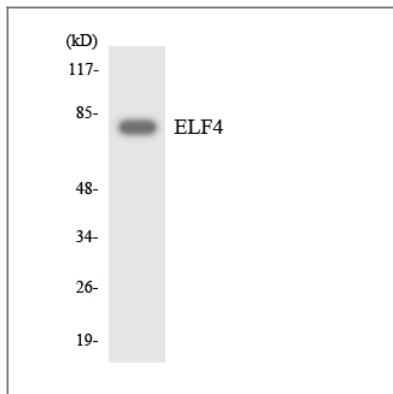
Tissue specificity Abundantly expressed in the placenta and in a variety of myeloid leukemia cell lines. Moderate levels of expression in heart, lung, spleen, thymus, peripheral blood lymphocytes, ovary and colon. Lower levels of expression in Jurkat T-cells and other T-cell lines and no expression in brain.

Function Function:Transcriptional activator that binds to DNA sequences containing the consensus 5'-WGGA-3'. Transactivates promoters of the hematopoietic growth factor genes CSF2, IL3, IL8, and of the bovine lysozyme gene. Acts synergistically with RUNX1 to transactivate the IL3 promoter. Also transactivates the PRF1 promoter in natural killer (NK) cells. Plays a role in the development and function of NK and NK T-cells and in innate immunity.,induction:By ponisterone A in erythroleukemia cells.,similarity:Belongs to the ETS family.,similarity:Contains 1 ETS DNA-binding domain.,subcellular location:Accumulation into PML nuclear bodies is mediated by PML.,subunit:Interacts via an N-terminal region with the RUNX1 Runt domain. Interacts via its C-terminus with PML; this interaction enhances ELF4 transactivation of the bovine lysozyme gene.,tissue specificity:Abundantly expressed in the placenta and in a variety of myeloid leukemia cell lines. Moderate levels of expression in heart, lung, spleen, thymus, peripheral blood lymphocytes, ovary and colon. Lower levels of expression in Jurkat T-cells and other T-cell lines and no expression in brain.,

Validation Data



Western Blot analysis of 22RV1 cells using Elf-4 Polyclonal Antibody diluted at 1:2000 cells nucleus extracted by Minute TM Cytoplasmic and Nuclear Fractionation kit (SC-003,Inventbiotech,MN,USA).



Western blot analysis of the lysates from RAW264.7 cells using ELF4 antibody.

Contact information

Orders: order@immunoway.com
Support: tech@immunoway.com
Telephone: 877-594-3616 (Toll Free), 408-747-0185
Website: <http://www.immunoway.com>
Address: 2200 Ringwood Ave San Jose, CA 95131 USA



Please scan the QR code
to access additional
product information:
Elf-4 Rabbit pAb

For Research Use Only. Not for Use in Diagnostic Procedures.

[Antibody](#) | [ELISA Kits](#) | [Protein](#) | [Reagents](#)