

EKLF/CKLF/UKLF Rabbit pAb

CatalogNo: YT1522

Orthogonal Validated 

Key Features

Host Species

- Rabbit

Reactivity

- Human, Mouse, Rat

Applications

- WB, IF, ELISA

MW

- 38kD(EKLF) 20kD(CKLF/UKLF)
(Observed)

Isotype

- IgG

Recommended Dilution Ratios

WB 1:500-1:2000**IF 1:200-1:1000****ELISA 1:20000****Not yet tested in other applications.**

Storage

Storage* -15°C to -25°C/1 year(Do not lower than -25°C)**Formulation** Liquid in PBS containing 50% glycerol, 0.5% BSA and 0.02% sodium azide.

Basic Information

Clonality Polyclonal

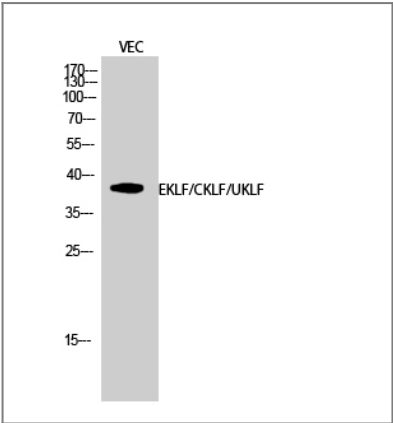
Immunogen Information

Immunogen The antiserum was produced against synthesized peptide derived from human KLF. AA range:291-340**Specificity** EKLF/CKLF/UKLF Polyclonal Antibody detects endogenous levels of EKLF/CKLF/UKLF protein.

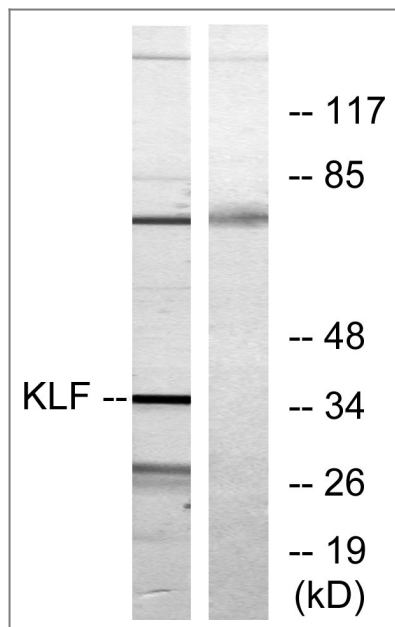
Target Information

Gene name	KLF1/KLF5/KLF7		
Protein Name	Krueppel-like factor 1/Krueppel-like factor 5/Krueppel-like factor 7		
	Organism	Gene ID	UniProt ID
	Human	10661 ; 688 ; 8609 ;	Q13351 ; Q13887 ; O75840 ;
	Mouse	12224 ; 93691 ;	
Cellular Localization	Nucleus . Colocalizes with SUMO1 in nuclear speckles. .		
Tissue specificity	Expression restricted to adult bone marrow and fetal liver. Not expressed in myeloid nor lymphoid cell lines.		
Function	Function:Transcription regulator of erythrocyte development. Binds to the CACCC box in the beta-globin gene promoter and activates transcription. When sumoylation, acts as a Probably serves as a general switch factor for erythroid development. When sumoylated, acts as a transcriptional repressor, by promoting interaction with CDH2/MI2beta and also represses megakaryocytic differentiation.,PTM:Acetylated; can be acetylated on both Lys-274 and Lys-288. Acetylation on Lys-274 (by CBP) appears to be the major site affecting EKLF transactivation activity.,PTM:Phosphorylated primarily on serine residues in the transactivation domain. Phosphorylation on Thr-23 is critical for the transactivation activity.,PTM:Sumoylated; sumoylation, promoted by PIAS1, leads to repression of megakaryocyte differentiation. Also promotes the interaction with the CDH4 subunit of the NuRD repression complex.,similarity:Belongs to the krueppel C2H2-type zinc-finger protein family.,similarity:Contains 3 C2H2-type zinc fingers.,subcellular location:Colocalizes with SUMO1 in nuclear speckles.,subunit:Interacts with CBP and EP300; the interactions enhance the transactivation activity. Interacts with PCAF; the interaction does not acetylate EKLF and inhibits its transactivation activity.,tissue specificity:Expression restricted to adult bone marrow and fetal liver. Not expressed in myeloid nor lymphoid cell lines.,		

Validation Data



Western Blot analysis of VEC cells using EKLF/CKLF/UKLF Polyclonal Antibody diluted at 1:500 cells nucleus extracted by Minute TM Cytoplasmic and Nuclear Fractionation kit (SC-003, Invent biotech, MN, USA).



Western blot analysis of lysates from Jurkat cells, treated with serum 20% 15', using KLF Antibody. The lane on the right is blocked with the synthesized peptide.

Contact information

Orders: order@immunoway.com
 Support: tech@immunoway.com
 Telephone: 877-594-3616 (Toll Free), 408-747-0185
 Website: <http://www.immunoway.com>
 Address: 2200 Ringwood Ave San Jose, CA 95131 USA



Please scan the QR code to access additional product information:
EKLF/CKLF/UKLF
Rabbit pAb

For Research Use Only. Not for Use in Diagnostic Procedures.

[Antibody](#) | [ELISA Kits](#) | [Protein](#) | [Reagents](#)