

eIF5A2 Rabbit pAb

CatalogNo: YT1520

Key Features

Host Species

- Rabbit

Reactivity

- Human, Mouse

Applications

- WB, IF, ELISA

MW

- 17kD (Observed)

Isotype

- IgG

Storage

Storage* -15°C to -25°C/1 year (Do not lower than -25°C)

Formulation Liquid in PBS containing 50% glycerol, 0.5% BSA and 0.02% sodium azide.

Recommended Dilution Ratios

WB 1:500-1:2000

IF 1:200-1:1000

ELISA 1:10000

Not yet tested in other applications.

Basic Information

Clonality Polyclonal

Immunogen Information

Immunogen The antiserum was produced against synthesized peptide derived from human eIF5A2. AA range: 78-127

Specificity eIF5A2 Polyclonal Antibody detects endogenous levels of eIF5A2 protein.

Target Information

Gene name EIF5A2

Protein Name Eukaryotic translation initiation factor 5A-2

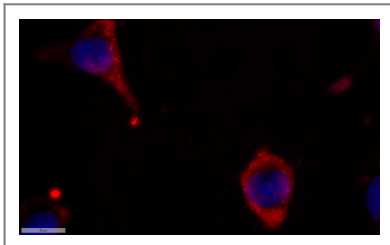
| Organism | Gene ID | UniProt ID |
|----------|--------------------------|--------------------------|
| Human | 56648 ; | Q9GZV4 ; |
| Mouse | 208691 ; | Q8BGY2 ; |

Cellular Localization Cytoplasm . Nucleus . Endoplasmic reticulum membrane ; Peripheral membrane protein ; Cytoplasmic side . Nucleus, nuclear pore complex . Hypusine modification promotes the nuclear export and cytoplasmic localization and there was a dynamic shift in the localization from predominantly cytoplasmic to primarily nuclear under apoptotic inducing conditions. .

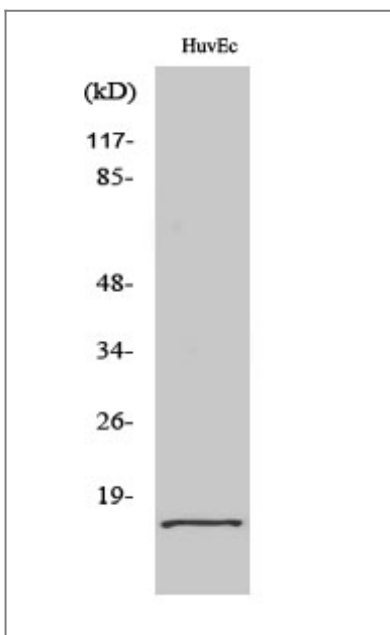
Tissue specificity Expressed in ovarian and colorectal cancer cell lines (at protein level). Highly expressed in testis. Overexpressed in some cancer cells.

Function Function:The precise role of eIF-5A in protein biosynthesis is not known but it functions by promoting the formation of the first peptide bond.,PTM:eIF-5A seems to be the only eukaryotic protein to have an hypusine residue which is a post-translational modification of a lysine by the addition of a butylamino group (from spermidine).,similarity:Belongs to the eIF-5A family.,tissue specificity:Expressed in ovarian and colorectal cancer cell lines (at protein level). Highly expressed in testis. Overexpressed in some cancer cells.,

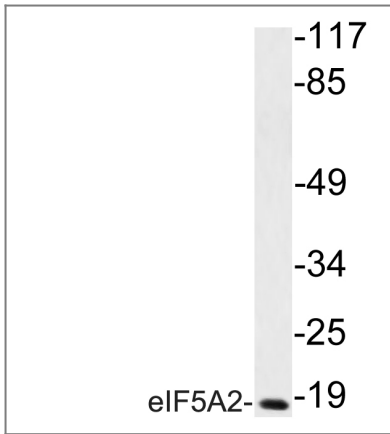
Validation Data



Immunofluorescence analysis of MCF7 cell. 1,primary Antibody was diluted at 1:100(4°C overnight). 2, Goat Anti Rabbit IgG (H&L) - AFuor 594 Secondary antibody(catalog No: RS3611) was diluted at 1:500(room temperature, 50min).



Western Blot analysis of various cells using eIF5A2 Polyclonal Antibody diluted at 1:1000



Western blot analysis of lysate from HUVEC cells, using eIF5A2 antibody.

Contact information

Orders: order@immunoway.com
Support: tech@immunoway.com
Telephone: 877-594-3616 (Toll Free), 408-747-0185
Website: <http://www.immunoway.com>
Address: 2200 Ringwood Ave San Jose, CA 95131 USA



Please scan the QR code to access additional product information:
eIF5A2 Rabbit pAb

For Research Use Only. Not for Use in Diagnostic Procedures.

[Antibody](#) | [ELISA Kits](#) | [Protein](#) | [Reagents](#)