

## Egr 1/2 Rabbit pAb

CatalogNo: YT1498

### Key Features

#### Host Species

- Rabbit

#### Reactivity

- Human, Mouse, Rat

#### Applications

- WB, IHC, IF, ELISA

#### MW

- 50kD (Observed)

#### Isotype

- IgG

### Recommended Dilution Ratios

**WB 1:500-1:2000**

**IHC 1:100-1:300**

**IF 1:200-1:1000**

**ELISA 1:20000**

**Not yet tested in other applications.**

### Storage

#### Storage\*

-15°C to -25°C/1 year (Do not lower than -25°C)

#### Formulation

Liquid in PBS containing 50% glycerol, 0.5% BSA and 0.02% sodium azide.

### Basic Information

#### Clonality

Polyclonal

### Immunogen Information

#### Immunogen

The antiserum was produced against synthesized peptide derived from human EGR1/2. AA range: 371-420

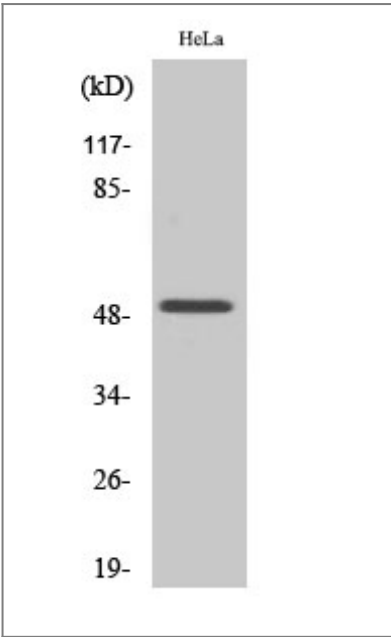
#### Specificity

Egr1/2 Polyclonal Antibody detects endogenous levels of Egr1/2 protein.

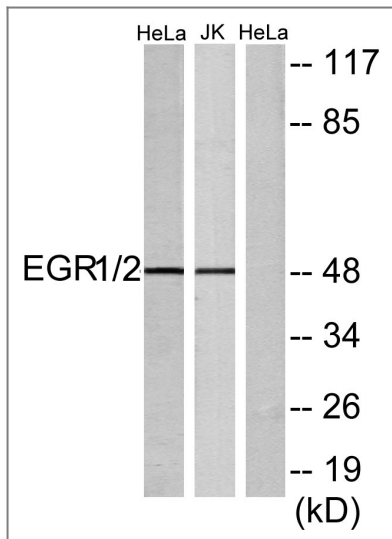
## Target Information

Gene name	EGR1/2		
Protein Name	Early growth response protein 1/2		
	Organism	Gene ID	UniProt ID
	Human	<a href="#">1958</a> ; <a href="#">1959</a> ;	<a href="#">P18146</a> ; <a href="#">P11161</a> ;
	Mouse	<a href="#">13653</a> ; <a href="#">13654</a> ;	
	Rat	<a href="#">24330</a> ; <a href="#">114090</a> ;	<a href="#">P08154</a> ; <a href="#">P51774</a> ;
Cellular Localization	Nucleus . Cytoplasm .		
Tissue specificity	Detected in neutrophils (at protein level).		
Function	Function:Transcriptional regulator. Recognizes and binds to the DNA sequence 5'-CGCCCCGC-3'(EGR-site). Activates the transcription of target genes whose products are required for mitogenesis and differentiation.,induction:By growth factors.,similarity:Belongs to the EGR C2H2-type zinc-finger protein family.,similarity:Contains 3 C2H2-type zinc fingers.,		

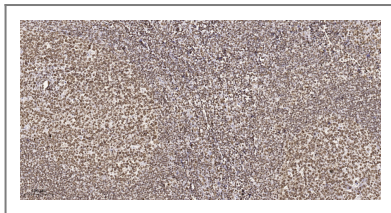
## Validation Data



Western Blot analysis of various cells using Egr-2 Polyclonal Antibody cells nucleus extracted by Minute TM Cytoplasmic and Nuclear Fractionation kit (SC-003, Invent biotech, MN, USA).



Western blot analysis of lysates from HeLa and Jurkat cells, using EGR1/2 Antibody. The lane on the right is blocked with the synthesized peptide.



Immunohistochemical analysis of paraffin-embedded human tonsil. 1, Tris-EDTA, pH 9.0 was used for antigen retrieval. 2 Antibody was diluted at 1:200 (4° overnight). 3, Secondary antibody was diluted at 1:200 (room temperature, 45min).

## Contact information

Orders: [order@immunoway.com](mailto:order@immunoway.com)  
 Support: [tech@immunoway.com](mailto:tech@immunoway.com)  
 Telephone: 877-594-3616 (Toll Free), 408-747-0185  
 Website: <http://www.immunoway.com>  
 Address: 2200 Ringwood Ave San Jose, CA 95131 USA



Please scan the QR code to access additional product information:  
**Egr 1/2 Rabbit pAb**

For Research Use Only. Not for Use in Diagnostic Procedures.

[Antibody](#) | [ELISA Kits](#) | [Protein](#) | [Reagents](#)