

## Dynein LC 2B Rabbit pAb

CatalogNo: YT1433

### Key Features

#### Host Species

- Rabbit

#### Reactivity

- Human, Mouse

#### Applications

- IHC, IF, ELISA

#### MW

- 11kD (Calculated)

#### Isotype

- IgG

### Recommended Dilution Ratios

IHC 1:100-1:300

ELISA 1:10000

IF 1:50-200

### Storage

**Storage\*** -15°C to -25°C/1 year (Do not lower than -25°C)

**Formulation** Liquid in PBS containing 50% glycerol, 0.5% BSA and 0.02% sodium azide.

### Basic Information

**Clonality** Polyclonal

### Immunogen Information

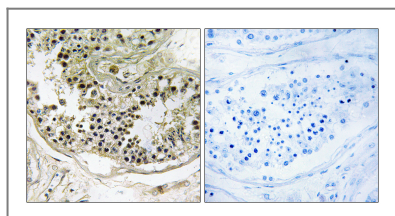
**Immunogen** The antiserum was produced against synthesized peptide derived from human DYNLRB2. AA range: 21-70

**Specificity** Dynein LC 2B Polyclonal Antibody detects endogenous levels of Dynein LC 2B protein.

### Target Information

<b>Gene name</b>	DYNLRB2		
<b>Protein Name</b>	Dynein light chain roadblock-type 2		
	<b>Organism</b>	<b>Gene ID</b>	<b>UniProt ID</b>
	Human	<a href="#">83657</a> ;	<a href="#">Q8TF09</a> ;
	Mouse	<a href="#">75465</a> ;	<a href="#">Q9DAJ5</a> ;
<b>Cellular Localization</b>	Cytoplasm, cytoskeleton.		
<b>Tissue specificity</b>	High expression in heart, brain, placenta, skeletal muscle, prostate and small intestine; moderate in kidney, pancreas, spleen, testis, ovary and colon; low in lung, liver, thymus and leukocyte.		
<b>Function</b>	Function:May be involved in assembly and motor function of dynein, which plays a central role in cell division and intracellular transport.,miscellaneous:Expression is significantly down-regulated in hepatocellular carcinoma (HCC) patients.,similarity:Belongs to the GAMAD family.,tissue specificity:High expression in heart, brain, placenta, skeletal muscle, prostate and small intestine; moderate in kidney, pancreas, spleen, testis, ovary and colon; low in lung, liver, thymus and leukocyte.,		

## Validation Data



Immunohistochemistry analysis of paraffin-embedded human testis tissue, using DYNLRB2 Antibody. The picture on the right is blocked with the synthesized peptide.

## Contact information

Orders: [order@immunoway.com](mailto:order@immunoway.com)  
 Support: [tech@immunoway.com](mailto:tech@immunoway.com)  
 Telephone: 877-594-3616 (Toll Free), 408-747-0185  
 Website: <http://www.immunoway.com>  
 Address: 2200 Ringwood Ave San Jose, CA 95131 USA



Please scan the QR code to access additional product information:  
**Dynein LC 2B Rabbit pAb**