

Dynein LC 2 Rabbit pAb

CatalogNo: YT1432

Key Features

Host Species

- Rabbit

Reactivity

- Human, Mouse, Rat

Applications

- IHC, IF, ELISA

MW

- 10kD (Calculated)

Isotype

- IgG

Recommended Dilution Ratios

IHC 1:100-1:300

ELISA 1:40000

IF 1:50-200

Storage

Storage*

-15°C to -25°C/1 year(Do not lower than -25°C)

Formulation

Liquid in PBS containing 50% glycerol, 0.5% BSA and 0.02% sodium azide.

Basic Information

Clonality

Polyclonal

Immunogen Information

Immunogen

The antiserum was produced against synthesized peptide derived from human DYNLL2. AA range:1-50

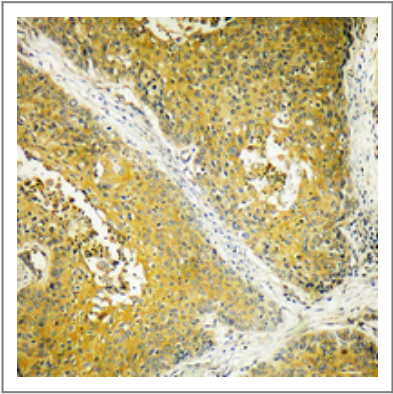
Specificity

Dynein LC 2 Polyclonal Antibody detects endogenous levels of Dynein LC 2 protein.

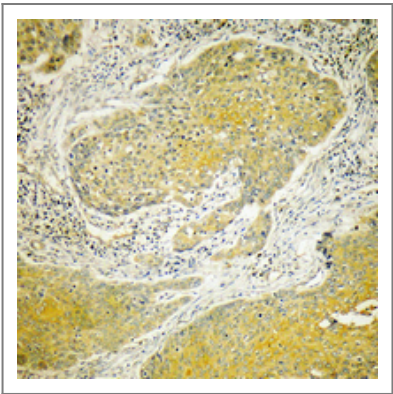
Target Information

Gene name	DYNLL2		
Protein Name	Dynein light chain 2 cytoplasmic		
	Organism	Gene ID	UniProt ID
	Human	140735;	Q96FJ2;
	Mouse	68097;	Q9D0M5;
	Rat	140734;	Q78P75;
Cellular Localization	Cytoplasm, cytoskeleton .		
Tissue specificity	Lung,		
Function	Function:May be involved in some aspects of dynein-related intracellular transport and motility. May play a role in changing or maintaining the spatial distribution of cytoskeletal structures.,similarity:Belongs to the dynein light chain family.,subunit:Homodimer. Interacts with BMF. Component of the myosin V motor complex as well as the microtubular dynein motor complex. Interacts with rabies virus phosphoprotein.,		

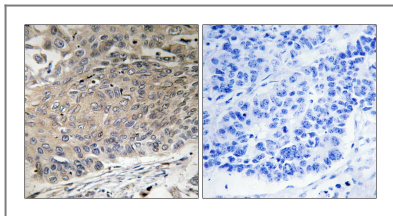
| Validation Data



Immunohistochemical analysis of paraffin-embedded Human breast cancer. Antibody was diluted at 1:100(4° overnight). High-pressure and temperature Tris-EDTA,pH8.0 was used for antigen retrieval.



Immunohistochemical analysis of paraffin-embedded Human breast cancer. Antibody was diluted at 1:100(4° overnight). High-pressure and temperature Tris-EDTA,pH8.0 was used for antigen retrieval.



Immunohistochemistry analysis of paraffin-embedded human lung carcinoma tissue, using DYNLL2 Antibody. The picture on the right is blocked with the synthesized peptide.

| Contact information

Orders: order@immunoway.com
Support: tech@immunoway.com
Telephone: 877-594-3616 (Toll Free), 408-747-0185
Website: <http://www.immunoway.com>
Address: 2200 Ringwood Ave San Jose, CA 95131 USA



Please scan the QR code to access additional product information:

Dynein LC 2 Rabbit pAb

For Research Use Only. Not for Use in Diagnostic Procedures.

[Antibody](#) | [ELISA Kits](#) | [Protein](#) | [Reagents](#)