

Dynein IC2 Rabbit pAb

CatalogNo: YT1430

Orthogonal Validated 

Key Features

Host Species

- Rabbit

Reactivity

- Human, Mouse, Rat, Chicken

Applications

- WB, ELISA

MW

- 70kD (Observed)

Isotype

- IgG

Recommended Dilution Ratios

WB 1:500-1:2000**ELISA 1:10000****Not yet tested in other applications.**

Storage

Storage*

-15°C to -25°C/1 year (Do not lower than -25°C)

Formulation

Liquid in PBS containing 50% glycerol, 0.5% BSA and 0.02% sodium azide.

Basic Information

Clonality

Polyclonal

Immunogen Information

Immunogen

The antiserum was produced against synthesized peptide derived from human DNAI2. AA range: 71-120

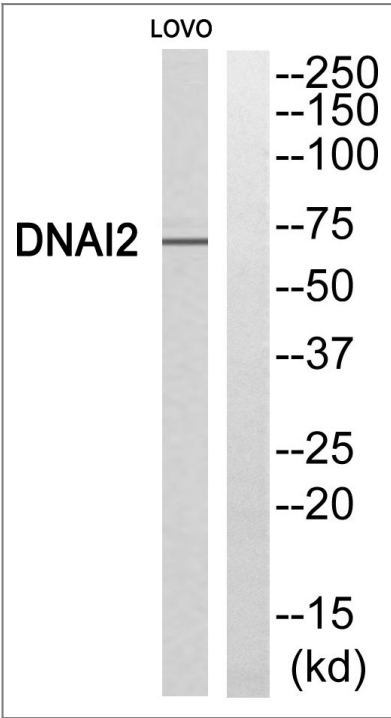
Specificity

Dynein IC2 Polyclonal Antibody detects endogenous levels of Dynein IC2 protein.

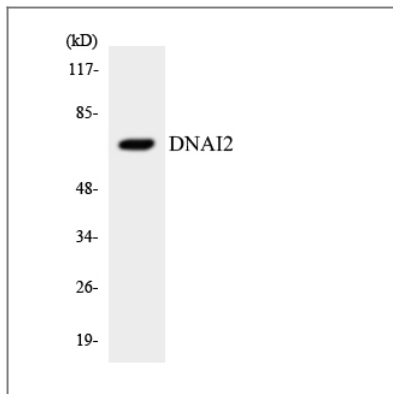
Target Information

Gene name	DNAI2		
Protein Name	Dynein intermediate chain 2 axonemal		
	Organism	Gene ID	UniProt ID
	Human	64446 ;	Q9GZS0 ;
	Mouse	432611 ;	A2AC93 ;
	Rat	360654 ;	Q66HC9 ;
Cellular Localization	Cytoplasm, cytoskeleton, cilium axoneme . Dynein axonemal particle . Located in the proximal region of respiratory cilia. .		
Tissue specificity	Highly expressed in trachea and testis. Expressed in respiratory ciliated cells (at protein level) (PubMed:33139725).		
Function	Disease:Defects in DNAI2 are the cause of primary ciliary dyskinesia type 9 (CILD9) [MIM:612444]. CILD is an autosomal recessive disorder characterized by axonemal abnormalities of motile cilia. Respiratory infections leading to chronic inflammation and bronchiectasis are recurrent, due to defects in the respiratory cilia; reduced fertility is often observed in male patients due to abnormalities of sperm tails. Half of the patients exhibit situs inversus, due to dysfunction of monocilia at the embryonic node and randomization of left-right body asymmetry. Primary ciliary dyskinesia associated with situs inversus is referred to as Kartagener syndrome.,Function:Part of the dynein complex of respiratory cilia.,sequence Caution:Intron retention.,similarity:Belongs to the dynein intermediate chain family.,similarity:Contains 5 WD repeats.,subunit:Consists of at least two heavy chains and a number of intermediate and light chains. Interacts with KTU.,tissue specificity:Highly expressed in trachea and testis.,		

Validation Data



Western blot analysis of DNAI2 Antibody. The lane on the right is blocked with the DNAI2 peptide.



Western blot analysis of the lysates from RAW264.7 cells using DNAI2 antibody.

Contact information

Orders: order@immunoway.com
Support: tech@immunoway.com
Telephone: 877-594-3616 (Toll Free), 408-747-0185
Website: <http://www.immunoway.com>
Address: 2200 Ringwood Ave San Jose, CA 95131 USA



Please scan the QR code to access additional product information:
Dynein IC2 Rabbit pAb

For Research Use Only. Not for Use in Diagnostic Procedures.

[Antibody](#) | [ELISA Kits](#) | [Protein](#) | [Reagents](#)