

DPF2 Rabbit pAb

CatalogNo: YT1408

Key Features

Host Species

- Rabbit

Reactivity

- Human, Mouse

Applications

- WB, IHC, IF, ELISA

MW

- 44kD (Observed)

Isotype

- IgG

Recommended Dilution Ratios

WB 1:500-1:2000

IHC 1:100-1:300

IF 1:200-1:1000

ELISA 1:10000

Not yet tested in other applications.

Storage

Storage*

-15°C to -25°C/1 year (Do not lower than -25°C)

Formulation

Liquid in PBS containing 50% glycerol, 0.5% BSA and 0.02% sodium azide.

Basic Information

Clonality

Polyclonal

Immunogen Information

Immunogen

The antiserum was produced against synthesized peptide derived from human REQU. AA range: 151-200

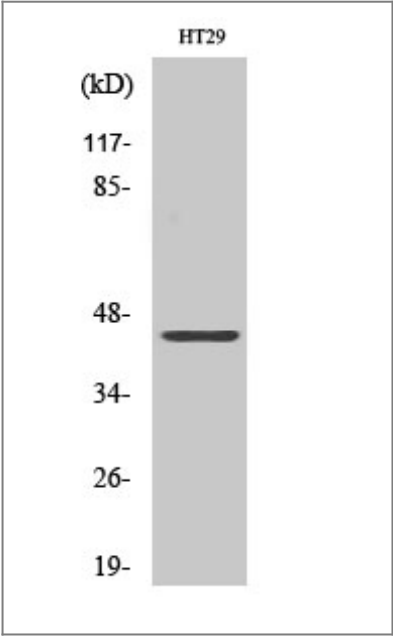
Specificity

DPF2 Polyclonal Antibody detects endogenous levels of DPF2 protein.

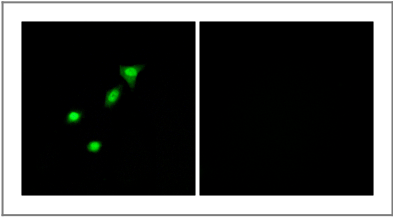
| Target Information

Gene name	DPF2		
Protein Name	Zinc finger protein ubi-d4		
	Organism	Gene ID	UniProt ID
	Human	5977 ;	Q92785 ;
	Mouse	19708 ;	Q61103 ;
Cellular Localization	Nucleus . Cytoplasm .		
Tissue specificity	Ubiquitous.		
Function	Function:May be a transcription factor required for the apoptosis response following survival factor withdrawal from myeloid cells. Might also have a role in the development and maturation of lymphoid cells.,similarity:Belongs to the requiem/DPF family.,similarity:Contains 1 C2H2-type zinc finger.,similarity:Contains 2 PHD-type zinc fingers.,subcellular location:30% nuclear. 70% cytoplasmic.,tissue specificity:Ubiquitous.,		

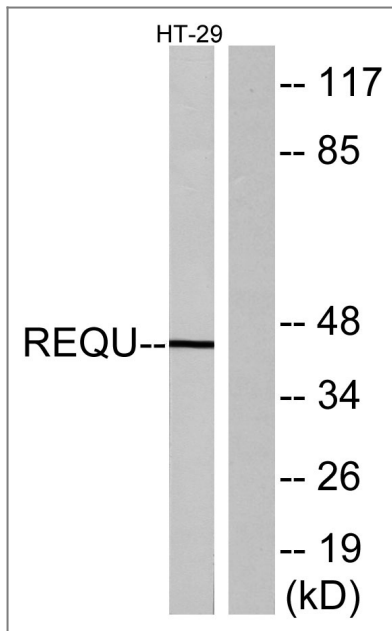
| Validation Data



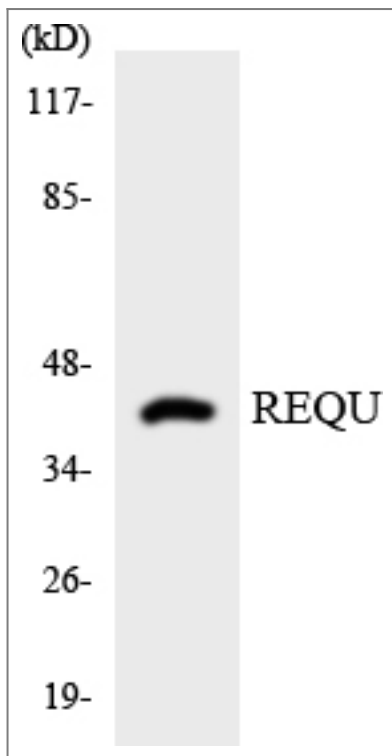
Western Blot analysis of various cells using DPF2 Polyclonal Antibody



Immunofluorescence analysis of A549 cells, using REQU Antibody. The picture on the right is blocked with the synthesized peptide.



Western blot analysis of lysates from HT-29 cells, using REQU Antibody. The lane on the right is blocked with the synthesized peptide.



Western blot analysis of the lysates from RAW264.7 cells using REQU antibody.

Contact information

Orders: order@immunoway.com
 Support: tech@immunoway.com
 Telephone: 877-594-3616 (Toll Free), 408-747-0185
 Website: <http://www.immunoway.com>
 Address: 2200 Ringwood Ave San Jose, CA 95131 USA



Please scan the QR code to access additional product information:
DPF2 Rabbit pAb

