

## Dorfin Rabbit pAb

CatalogNo: YT1404

### Key Features

#### Host Species

- Rabbit

#### Reactivity

- Human, Mouse

#### Applications

- WB, ELISA

#### MW

- 90kD (Observed)

#### Isotype

- IgG

### Recommended Dilution Ratios

**WB 1:500-1:2000**

**ELISA 1:40000**

**Not yet tested in other applications.**

### Storage

#### Storage\*

-15°C to -25°C/1 year (Do not lower than -25°C)

#### Formulation

Liquid in PBS containing 50% glycerol, 0.5% BSA and 0.02% sodium azide.

### Basic Information

#### Clonality

Polyclonal

### Immunogen Information

#### Immunogen

The antiserum was produced against synthesized peptide derived from human RNF19A. AA range: 51-100

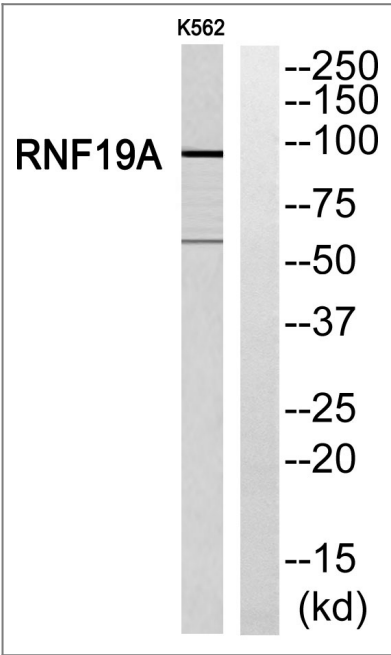
#### Specificity

Dorfin Polyclonal Antibody detects endogenous levels of Dorfin protein.

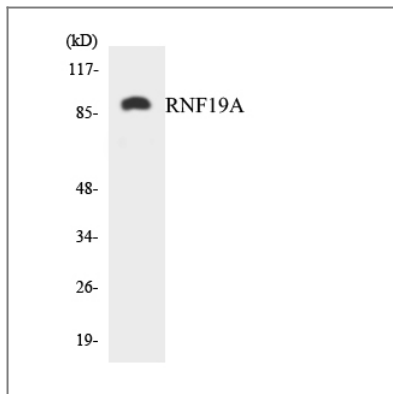
### Target Information

Gene name	RNF19A		
Protein Name	E3 ubiquitin-protein ligase RNF19A		
	Organism	Gene ID	UniProt ID
	Human	<a href="#">25897;</a>	<a href="#">Q9NV58;</a>
	Mouse	<a href="#">30945;</a>	<a href="#">P50636;</a>
Cellular Localization	Membrane ; Multi-pass membrane protein . Cytoplasm, cytoskeleton, microtubule organizing center, centrosome . Present in the hyaline inclusion bodies specifically found in motor neurons from amyotrophic lateral sclerosis patients. Present in the Lewy bodies specifically found in neurons from Parkinson disease patients.		
Tissue specificity	Widely expressed, with highest levels in heart. Ubiquitously expressed in the central nervous system.		
Function	Function:E3 ubiquitin-protein ligase which accepts ubiquitin from E2 ubiquitin-conjugating enzymes UBE2L3 and UBE2L6 in the form of a thioester and then directly transfers the ubiquitin to targeted substrates, such as SNCAIP or CASR. Specifically ubiquitinates pathogenic SOD1 variants, which leads to their proteasomal degradation and to neuronal protection.,pathway:Protein modification; protein ubiquitination.,PTM:Phosphorylated upon DNA damage, probably by ATM or ATR.,similarity:Belongs to the RBR family. RNF19 subfamily.,similarity:Contains 1 IBR-type zinc finger.,similarity:Contains 2 RING-type zinc fingers.,subcellular location:Present in the hyaline inclusion bodies specifically found in motor neurons from amyotrophic lateral sclerosis patients. Present in the Lewy bodies specifically found in neurons from Parkinson disease patients.,subunit:Interacts with UBE2L3 and UBE2L6. Interacts with transcription factor Sp1. Interacts with VCP, CASR, SNCAIP and with some SOD1 variants which cause amyotrophic lateral sclerosis, but not with wild-type SOD1.,tissue specificity:Widely expressed, with highest levels in heart. Ubiquitously expressed in the central nervous system.,		

| Validation Data



Western blot analysis of RNF19A Antibody. The lane on the right is blocked with the RNF19A peptide.



Western blot analysis of the lysates from Jurkat cells using RNF19A antibody.

## Contact information

Orders: [order@immunoway.com](mailto:order@immunoway.com)  
Support: [tech@immunoway.com](mailto:tech@immunoway.com)  
Telephone: 877-594-3616 (Toll Free), 408-747-0185  
Website: <http://www.immunoway.com>  
Address: 2200 Ringwood Ave San Jose, CA 95131 USA



Please scan the QR code  
to access additional  
product information:

**Dorfin Rabbit pAb**

For Research Use Only. Not for Use in Diagnostic Procedures.

[Antibody](#) | [ELISA Kits](#) | [Protein](#) | [Reagents](#)