

DNA pol ι Rabbit pAb

CatalogNo: YT1377

Key Features

Host Species

- Rabbit

Reactivity

- Human, Mouse

Applications

- WB, ELISA

MW

- 85kD (Observed)

Isotype

- IgG

Recommended Dilution Ratios

WB 1:500-1:2000

ELISA 1:40000

Not yet tested in other applications.

Storage

Storage*

-15°C to -25°C/1 year (Do not lower than -25°C)

Formulation

Liquid in PBS containing 50% glycerol, 0.5% BSA and 0.02% sodium azide.

Basic Information

Clonality

Polyclonal

Immunogen Information

Immunogen

The antiserum was produced against synthesized peptide derived from human POLI. AA range: 641-690

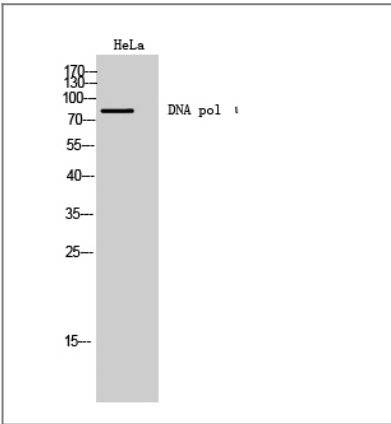
Specificity

DNA pol ι Polyclonal Antibody detects endogenous levels of DNA pol ι protein.

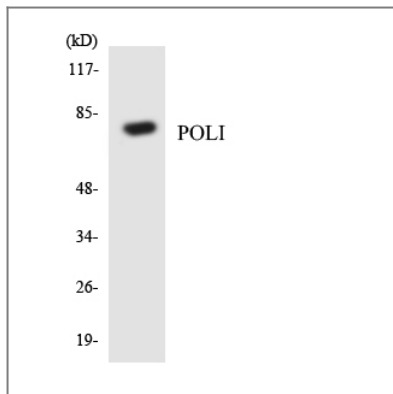
Target Information

Gene name	POLI		
Protein Name	DNA polymerase iota		
	Organism	Gene ID	UniProt ID
	Human	11201 ;	Q9UNA4 ;
	Mouse		Q6R3M4 ;
Cellular Localization	Nucleus . Binding to ubiquitin mediates localization to replication forks after UV-induced DNA damage. .		
Tissue specificity	Ubiquitous. Highly expressed in testis.		
Function	Catalytic activity:Deoxynucleoside triphosphate + DNA(n) = diphosphate + DNA(n+1).,cofactor:Magnesium.,Domain:The catalytic core consists of fingers, palm and thumb subdomains, but the fingers and thumb subdomains are much smaller than in high-fidelity polymerases; residues from five sequence motifs of the Y-family cluster around an active site cleft that can accommodate DNA and nucleotide substrates with relaxed geometric constraints, with consequently higher rates of misincorporation and low processivity.,Function:Error-prone DNA polymerase specifically involved in DNA repair. Plays an important role in translesion synthesis, where the normal high-fidelity DNA polymerases cannot proceed and DNA synthesis stalls. Favors Hoogsteen base-pairing in the active site. Inserts the correct base with high-fidelity opposite an adenosine template. Exhibits low fidelity and efficiency opposite a thymidine template, where it will preferentially insert guanosine. May play a role in hypermutation of immunoglobulin genes. Forms a Schiff base with 5'-deoxyribose phosphate at abasic sites, but may not have lyase activity.,similarity:Belongs to the DNA polymerase type-Y family.,similarity:Contains 1 umuC domain.,subcellular location:Accumulates at replication forks after DNA damage.,subunit:Binds REV1L (By similarity). Binds POLH.,tissue specificity:Ubiquitous. Highly expressed in testis.,		

| Validation Data



Western Blot analysis of HeLa cells using DNA pol ι Polyclonal Antibody cells nucleus extracted by Minute TM Cytoplasmic and Nuclear Fractionation kit (SC-003,Inventbiotech,MN,USA).



Western blot analysis of the lysates from HeLa cells using POLI antibody.

Contact information

Orders: order@immunoway.com
Support: tech@immunoway.com
Telephone: 877-594-3616 (Toll Free), 408-747-0185
Website: <http://www.immunoway.com>
Address: 2200 Ringwood Ave San Jose, CA 95131 USA



Please scan the QR code
to access additional
product information:
**DNA pol I Rabbit
pAb**

For Research Use Only. Not for Use in Diagnostic Procedures.

[Antibody](#) | [ELISA Kits](#) | [Protein](#) | [Reagents](#)