

DLEC1 Rabbit pAb

CatalogNo: YT1357

Key Features

Host Species

- Rabbit

Reactivity

- Human,Rat,Mouse,

Applications

- IHC,IF,ELISA

MW

- 196kD (Calculated)

Isotype

- IgG

Recommended Dilution Ratios

IHC 1:100-1:300

IF 1:200-1:1000

ELISA 1:10000

Not yet tested in other applications.

Storage

Storage* -15°C to -25°C/1 year(Do not lower than -25°C)

Formulation Liquid in PBS containing 50% glycerol, 0.5% BSA and 0.02% sodium azide.

Basic Information

Clonality Polyclonal

Immunogen Information

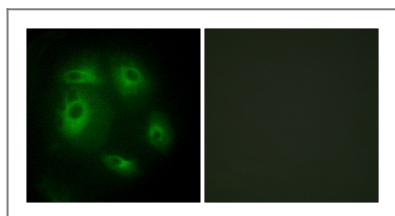
Immunogen The antiserum was produced against synthesized peptide derived from human DLEC1. AA range:1-50

Specificity DLEC1 Polyclonal Antibody detects endogenous levels of DLEC1 protein.

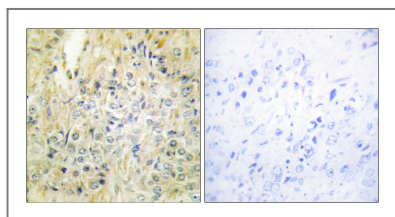
Target Information

| | | | |
|------------------------------|--|-----------------------|-------------------------|
| Gene name | DLEC1 | | |
| Protein Name | Deleted in lung and esophageal cancer protein 1 | | |
| | Organism | Gene ID | UniProt ID |
| | Human | 9940; | Q9Y238; |
| | Mouse | | Q8BLA1; |
| Cellular Localization | Cytoplasm . | | |
| Tissue specificity | Expressed in all tissues examined. Expression is highest in prostate and testis. | | |
| Function | Alternative products:At least six differentially spliced products may exist,Disease:Defects in DLEC1 may be a cause of breast cancer.,Disease:Defects in DLEC1 may be a cause of esophageal cancer [MIM:133239].,Disease:Defects in DLEC1 may be a cause of primary lung cancer [MIM:211980]. In 33% of lung, esophageal and renal cancer cell lines and primary cancers, there is a lack of functional transcripts and an increase in alternatively spliced non-functional transcripts; the gene itself is not altered.,Disease:Defects in DLEC1 may be a cause of renal cancer.,Function:May act as a tumor suppressor by inhibiting cell proliferation.,sequence Caution:Intron retention.,tissue specificity:Expressed in all tissues examined. Expression is highest in prostate and testis., | | |

Validation Data



Immunofluorescence analysis of HeLa cells, using DLEC1 Antibody. The picture on the right is blocked with the synthesized peptide.



Immunohistochemistry analysis of paraffin-embedded human prostate carcinoma tissue, using DLEC1 Antibody. The picture on the right is blocked with the synthesized peptide.

Contact information

Orders: order@immunoway.com
 Support: tech@immunoway.com
 Telephone: 877-594-3616 (Toll Free), 408-747-0185
 Website: <http://www.immunoway.com>
 Address: 2200 Ringwood Ave San Jose, CA 95131 USA



Please scan the QR code to access additional product information:
DLEC1 Rabbit pAb

