

## DHS Rabbit pAb

CatalogNo: YT1350

### Key Features

#### Host Species

- Rabbit

#### Reactivity

- Human,Rat,Mouse,

#### Applications

- WB,ELISA

#### MW

- 45kD (Observed)

#### Isotype

- IgG

### Recommended Dilution Ratios

**WB 1:500-1:2000**

**ELISA 1:20000**

**Not yet tested in other applications.**

### Storage

**Storage\*** -15°C to -25°C/1 year(Do not lower than -25°C)

**Formulation** Liquid in PBS containing 50% glycerol, 0.5% BSA and 0.02% sodium azide.

### Basic Information

**Clonality** Polyclonal

### Immunogen Information

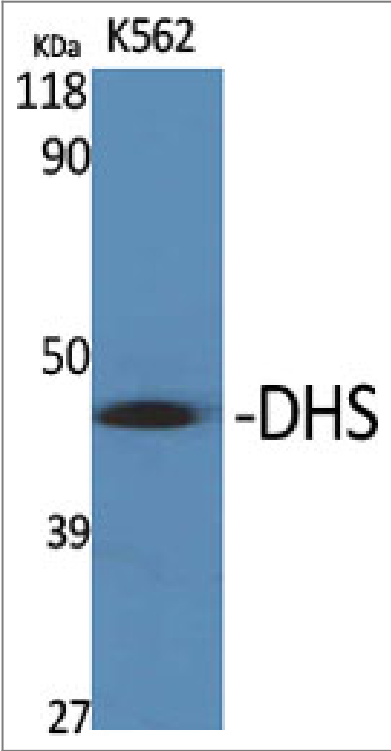
**Immunogen** The antiserum was produced against synthesized peptide derived from human DHPS. AA range:51-100

**Specificity** DHS Polyclonal Antibody detects endogenous levels of DHS protein.

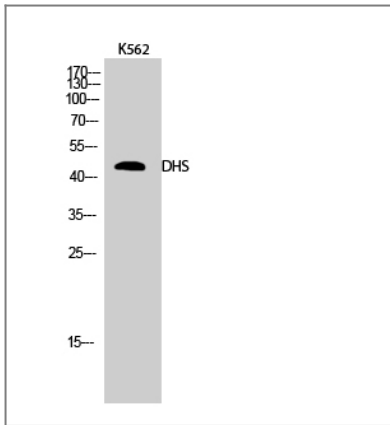
### Target Information

Gene name	DHPS		
Protein Name	Deoxyhypusine synthase		
	Organism	Gene ID	UniProt ID
	Human	<a href="#">1725;</a>	<a href="#">P49366;</a>
	Mouse		<a href="#">Q3TXU5;</a>
Cellular Localization	cytoplasm,cytosol,		
Tissue specificity	Blood,Brain,Cervix carcinoma,Lung,		
Function	Catalytic activity:[eIF5A-precursor]-lysine + spermidine = [eIF5A-precursor]-deoxyhypusine + propane-1,3-diamine.,cofactor:NAD.,Function:Catalyzes the NAD-dependent oxidative cleavage of spermidine and the subsequent transfer of the butylamine moiety of spermidine to the epsilon-amino group of a specific lysine residue of the eIF-5A precursor protein to form the intermediate deoxyhypusine residue.,pathway:Protein modification; eIF5A hypusination.,PTM:Phosphorylated upon DNA damage, probably by ATM or ATR.,similarity:Belongs to the deoxyhypusine synthase family.,subunit:Homotetramer formed by a dimer of dimers.,		

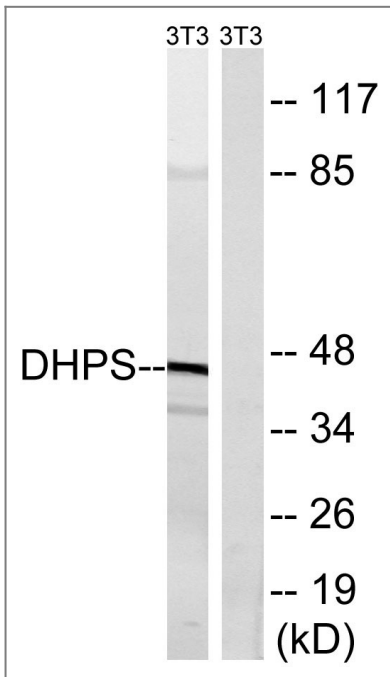
Validation Data



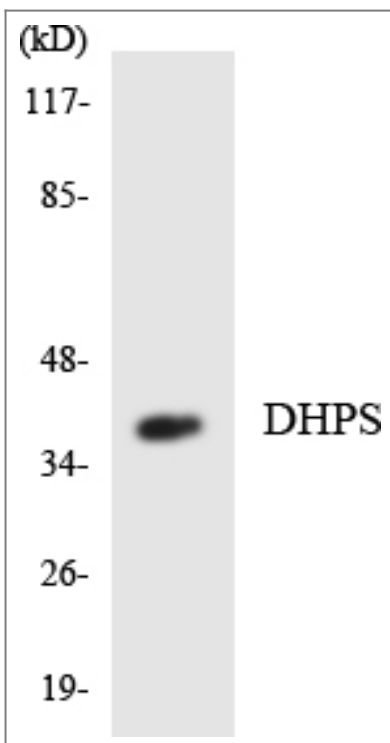
Western Blot analysis of various cells using DHS Polyclonal Antibody



Western Blot analysis of K562 cells using DHS Polyclonal Antibody



Western blot analysis of lysates from NIH/3T3 cells, using DHPS Antibody. The lane on the right is blocked with the synthesized peptide.



Western blot analysis of the lysates from HUVEC cells using DHPS antibody.

## | Contact information

Orders: order@immunoway.com  
Support: tech@immunoway.com  
Telephone: 877-594-3616 (Toll Free), 408-747-0185  
Website: <http://www.immunoway.com>  
Address: 2200 Ringwood Ave San Jose, CA 95131 USA



Please scan the QR code  
to access additional  
product information:  
**DHS Rabbit pAb**

---

For Research Use Only. Not for Use in Diagnostic Procedures.

[Antibody](#) | [ELISA Kits](#) | [Protein](#) | [Reagents](#)