

DHODH Rabbit pAb

CatalogNo: YT1345

Key Features

Host Species

- Rabbit

Reactivity

- Human,Rat,Mouse,

Applications

- WB,IHC,IF,ELISA

MW

- 48kD (Observed)

Isotype

- IgG

Recommended Dilution Ratios

WB 1:500-1:2000

IHC 1:100-1:300

ELISA 1:40000

IF 1:50-200

Storage

Storage*

-15°C to -25°C/1 year(Do not lower than -25°C)

Formulation

Liquid in PBS containing 50% glycerol, 0.5% BSA and 0.02% sodium azide.

Basic Information

Clonality

Polyclonal

Immunogen Information

Immunogen

The antiserum was produced against synthesized peptide derived from human DHODH.
AA range:211-260

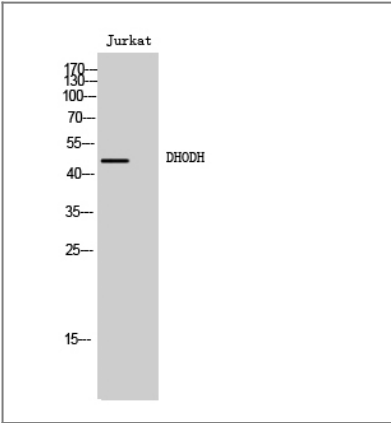
Specificity

DHODH Polyclonal Antibody detects endogenous levels of DHODH protein.

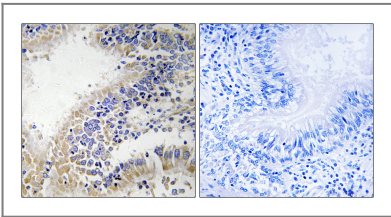
Target Information

Gene name	DHODH		
Protein Name	Dihydroorotate dehydrogenase		
	Organism	Gene ID	UniProt ID
	Human	1723 ;	Q02127 ;
	Mouse		Q35435 ;
Cellular Localization	Mitochondrion inner membrane ; Single-pass membrane protein .		
Tissue specificity	Skin,Testis,		
Function	Catalytic activity:(S)-dihydroorotate + O(2) = orotate + H(2)O(2).,cofactor:Binds 1 FAD per subunit.,pathway:Pyrimidine metabolism; UMP biosynthesis via de novo pathway; UMP from HCO(3)(-): step 4/6.,similarity:Belongs to the dihydroorotate dehydrogenase family.,		

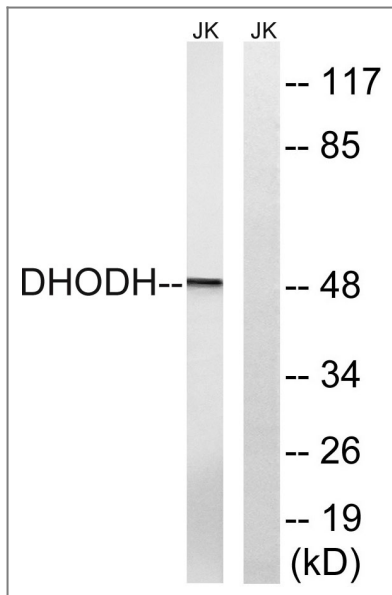
| Validation Data



Western Blot analysis of Jurkat cells using DHODH Polyclonal Antibody



Immunohistochemistry analysis of paraffin-embedded human breast carcinoma tissue, using DHODH Antibody. The picture on the right is blocked with the synthesized peptide.



Western blot analysis of lysates from Jurkat cells, using DHODH Antibody.
The lane on the right is blocked with the synthesized peptide.

Contact information

Orders: order@immunoway.com
 Support: tech@immunoway.com
 Telephone: 877-594-3616 (Toll Free), 408-747-0185
 Website: <http://www.immunoway.com>
 Address: 2200 Ringwood Ave San Jose, CA 95131 USA



Please scan the QR code
to access additional
product information:
DHODH Rabbit pAb

For Research Use Only. Not for Use in Diagnostic Procedures.

[Antibody](#) | [ELISA Kits](#) | [Protein](#) | [Reagents](#)