

## DHA Kinase Rabbit pAb

CatalogNo: YT1341

### Key Features

#### Host Species

- Rabbit

#### Reactivity

- Human, Mouse, Rat

#### Applications

- WB, IHC, IF, ELISA

#### MW

- 59kD (Observed)

#### Isotype

- IgG

### Recommended Dilution Ratios

**WB 1:200-1:1000**

**ELISA 1:20000**

**IF 1:20-50**

### Storage

#### Storage\*

-15°C to -25°C/1 year (Do not lower than -25°C)

#### Formulation

Liquid in PBS containing 50% glycerol, 0.5% BSA and 0.02% sodium azide.

### Basic Information

#### Clonality

Polyclonal

### Immunogen Information

#### Immunogen

The antiserum was produced against synthesized peptide derived from human DAK. AA range: 91-140

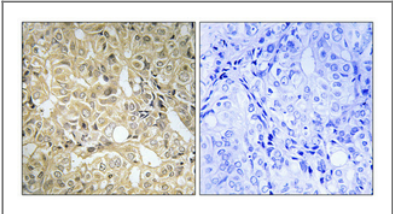
#### Specificity

DHA Kinase Polyclonal Antibody detects endogenous levels of DHA Kinase protein.

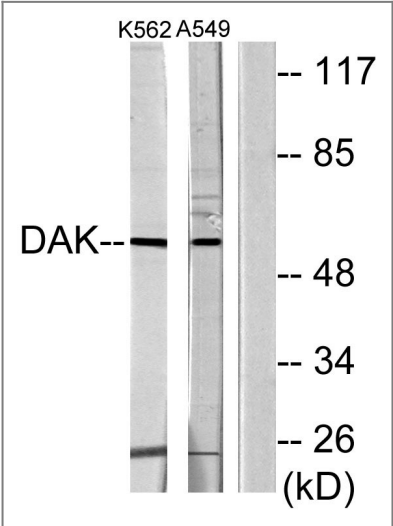
### Target Information

Gene name	DAK		
Protein Name	Bifunctional ATP-dependent dihydroxyacetone kinase/FAD-AMP lyase		
	Organism	Gene ID	UniProt ID
	Human	<a href="#">26007</a> ;	<a href="#">Q3LXA3</a> ;
	Mouse	<a href="#">225913</a> ;	<a href="#">Q8VC30</a> ;
	Rat	<a href="#">361730</a> ;	<a href="#">Q4KLZ6</a> ;
Cellular Localization	nucleus,cytosol,extracellular exosome,		
Tissue specificity	Detected in erythrocytes (at protein level).		
Function	Catalytic activity:ATP + glycerone = ADP + glycerone phosphate.,Catalytic activity:FAD = AMP + riboflavin cyclic-4',5'-phosphate.,cofactor:Magnesium.,cofactor:Manganese or cobalt; for FAD-AMP lyase activity.,enzyme regulation:Each activity is inhibited by the substrate(s) of the other.,Function:Catalyzes both the phosphorylation of dihydroxyacetone and the splitting of ribonucleoside diphosphate-X compounds among which FAD is the best substrate.,similarity:Belongs to the dihydroxyacetone kinase (DAK) family.,similarity:Contains 1 DAK1 (dihydroxyacetone kinase subunit 1) domain.,similarity:Contains 1 DAK2 (dihydroxyacetone kinase subunit 2) domain.,subunit:Homodimer.,		

Validation Data



Immunohistochemical analysis of paraffin-embedded Human prostate cancer. Antibody was diluted at 1:100(4° overnight). High-pressure and temperature Tris-EDTA,pH8.0 was used for antigen retrieval. Negative contrl (right) obtaned from antibody was pre-absorbed by immunogen peptide.



Western blot analysis of lysates from K562 and A549 cells, using DAK Antibody. The lane on the right is blocked with the synthesized peptide.

## | Contact information

Orders: order@immunoway.com  
Support: tech@immunoway.com  
Telephone: 877-594-3616 (Toll Free), 408-747-0185  
Website: <http://www.immunoway.com>  
Address: 2200 Ringwood Ave San Jose, CA 95131 USA



Please scan the QR code  
to access additional  
product information:  
**DHA Kinase Rabbit  
pAb**

---

For Research Use Only. Not for Use in Diagnostic Procedures.

[Antibody](#) | [ELISA Kits](#) | [Protein](#) | [Reagents](#)