

DGK- ζ Rabbit pAb

CatalogNo: YT1335

Key Features

Host Species

- Rabbit

Reactivity

- Human, Mouse, Rat

Applications

- IHC, IF, ELISA

MW

- 124kD (Calculated)

Isotype

- IgG

Storage

Storage* -15°C to -25°C/1 year (Do not lower than -25°C)

Formulation Liquid in PBS containing 50% glycerol, 0.5% BSA and 0.02% sodium azide.

Recommended Dilution Ratios

IHC 1:100-1:300

ELISA 1:20000

IF 1:50-200

Basic Information

Clonality Polyclonal

Immunogen Information

Immunogen The antiserum was produced against synthesized peptide derived from human DGKZ. AA range: 601-650

Specificity DGK- ζ Polyclonal Antibody detects endogenous levels of DGK- ζ protein.

Target Information

Gene name DGKZ

Protein Name Diacylglycerol kinase zeta

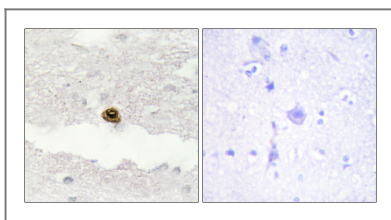
Organism	Gene ID	UniProt ID
Human	8525 ;	Q13574 ;
Mouse		Q80UP3 ;

Cellular Localization Nucleus . Cytoplasm, cytosol . Cell membrane . Cell projection, lamellipodium .

Tissue specificity Highest levels in brain, and substantial levels in skeletal muscle, heart, and pancreas. ; [Isoform 2]: Predominantly expressed in muscle.

Function Catalytic activity:ATP + 1,2-diacylglycerol = ADP + 1,2-diacyl-sn-glycerol 3-phosphate.,Caution:The sequence shown here is derived from an Ensembl automatic analysis pipeline and should be considered as preliminary data.,Function:Displays a strong preference for 1,2-diacylglycerols over 1,3-diacylglycerols, but lacks substrate specificity among molecular species of long chain diacylglycerols. Isoform 2 but not isoform 1 regulates RASGRP1 activity.,PTM:Phosphorylation of the MARCKS homology domain by PKC reduces nuclear accumulation of DGK-zeta.,similarity:Belongs to the eukaryotic diacylglycerol kinase family.,similarity:Contains 1 DAGKc domain.,similarity:Contains 2 ANK repeats.,similarity:Contains 2 phorbol-ester/DAG-type zinc fingers.,subunit:Interacts with the PDZ domain of the syntrophin SNTG1 and that of SNX27. Isoform 2 forms a signaling complex with RASGRP1 and HRAS.,tissue specificity:Highest levels in brain, and substantial levels in skeletal muscle, heart, and pancreas. Isoform 1 is predominantly expressed in muscle.,

Validation Data



Immunohistochemistry analysis of paraffin-embedded human brain, using DGKZ Antibody. The picture on the right is blocked with the synthesized peptide.

Contact information

Orders: order@immunoway.com
Support: tech@immunoway.com
Telephone: 877-594-3616 (Toll Free), 408-747-0185
Website: <http://www.immunoway.com>
Address: 2200 Ringwood Ave San Jose, CA 95131 USA



Please scan the QR code to access additional product information:
DGK-ζ Rabbit pAb

