

## DD2 Rabbit pAb

CatalogNo: YT1305

### Key Features

#### Host Species

- Rabbit

#### Reactivity

- Human

#### Applications

- WB,IHC,IF,ELISA

#### MW

- 37kD (Observed)

#### Isotype

- IgG

### Recommended Dilution Ratios

**WB 1:500-1:2000**

**IHC 1:100-1:300**

**ELISA 1:20000**

**IF 1:50-200**

### Storage

**Storage\*** -15°C to -25°C/1 year(Do not lower than -25°C)

**Formulation** Liquid in PBS containing 50% glycerol, 0.5% BSA and 0.02% sodium azide.

### Basic Information

**Clonality** Polyclonal

### Immunogen Information

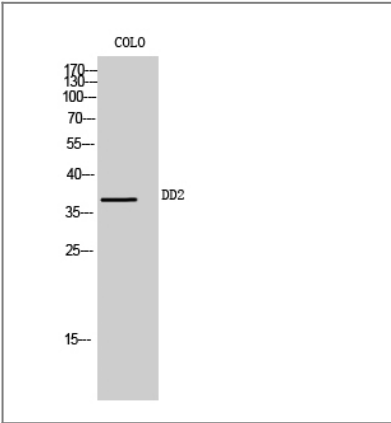
**Immunogen** The antiserum was produced against synthesized peptide derived from human AKR1C2. AA range:21-70

**Specificity** DD2 Polyclonal Antibody detects endogenous levels of DD2 protein.

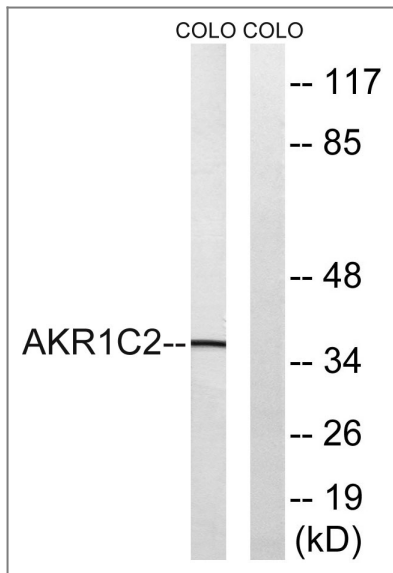
### Target Information

Gene name	AKR1C2		
Protein Name	Aldo-keto reductase family 1 member C2		
	Organism	Gene ID	UniProt ID
	Human	<a href="#">1646</a> ;	<a href="#">P52895</a> ;
Cellular Localization	Cytoplasm, cytosol .		
Tissue specificity	Expressed in fetal testes. Expressed in fetal and adult adrenal glands.		
Function	Catalytic activity:Androsterone + NAD(P)(+) = 5-alpha-androstane-3,17-dione + NAD(P)H.,Catalytic activity:Trans-1,2-dihydrobenzene-1,2-diol + NADP(+) = catechol + NADPH.,enzyme regulation:Inhibited by hexestrol with an IC(50) of 2.8 uM, 1,10-phenanthroline with an IC(50) of 2100 uM, 1,7-phenanthroline with an IC(50) of 1500 uM, flufenamic acid with an IC(50) of 0.9 uM, indomethacin with an IC(50) of 75 uM, ibuprofen with an IC(50) of 6.9 uM, lithocholic acid with an IC(50) of 0.07 uM, ursodeoxycholic acid with an IC(50) of 0.08 uM and chenodeoxycholic acid with an IC(50) of 0.13 uM.,Function:Works in concert with the 5-alpha/5-beta-steroid reductases to convert steroid hormones into the 3-alpha/5-alpha and 3-alpha/5-beta-tetrahydrosteroids. Catalyzes the inactivation of the most potent androgen 5-alpha-dihydrotestosterone (5-alpha-DHT) to 5-alpha-androstane-3-alpha,17-beta-diol (3-alpha-diol). Has a high bile-binding ability.,similarity:Belongs to the aldo/keto reductase family.,		

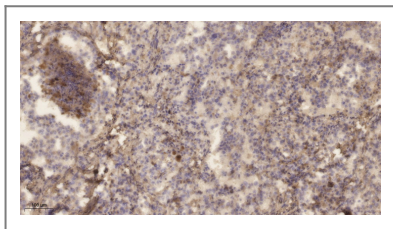
| Validation Data



Western Blot analysis of COLO cells using DD2 Polyclonal Antibody



Western blot analysis of lysates from COLO cells, using AKR1C2 Antibody. The lane on the right is blocked with the synthesized peptide.



Immunohistochemical analysis of paraffin-embedded human lung cancer. 1, Antibody was diluted at 1:200(4° overnight). 2, Tris-EDTA,pH9.0 was used for antigen retrieval. 3,Secondary antibody was diluted at 1:200(room temperature, 45min).

## Contact information

Orders: [order@immunoway.com](mailto:order@immunoway.com)  
 Support: [tech@immunoway.com](mailto:tech@immunoway.com)  
 Telephone: 877-594-3616 (Toll Free), 408-747-0185  
 Website: <http://www.immunoway.com>  
 Address: 2200 Ringwood Ave San Jose, CA 95131 USA



Please scan the QR code to access additional product information:  
**DD2 Rabbit pAb**

For Research Use Only. Not for Use in Diagnostic Procedures.

[Antibody](#) | [ELISA Kits](#) | [Protein](#) | [Reagents](#)