

DcR3 Rabbit pAb

CatalogNo: YT1303

Key Features

Host Species

- Rabbit

Reactivity

- Human

Applications

- WB,IHC,IF,ELISA

MW

- 32kD (Observed)

Isotype

- IgG

Recommended Dilution Ratios

WB 1:500-1:2000

IHC 1:100-1:300

IF 1:200-1:1000

ELISA 1:5000

Not yet tested in other applications.

Storage

Storage*

-15°C to -25°C/1 year(Do not lower than -25°C)

Formulation

Liquid in PBS containing 50% glycerol, 0.5% BSA and 0.02% sodium azide.

Basic Information

Clonality

Polyclonal

Immunogen Information

Immunogen

The antiserum was produced against synthesized peptide derived from human TNFRSF6B. AA range:251-300

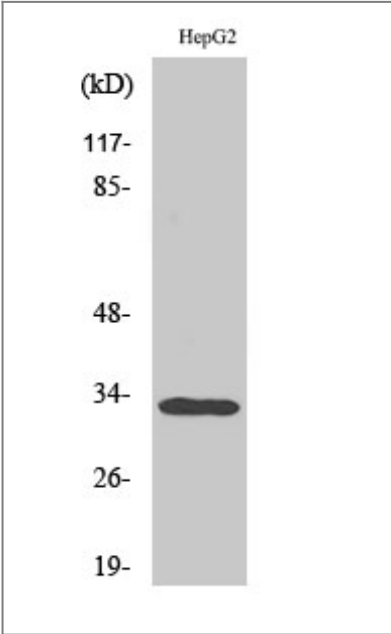
Specificity

DcR3 Polyclonal Antibody detects endogenous levels of DcR3 protein.

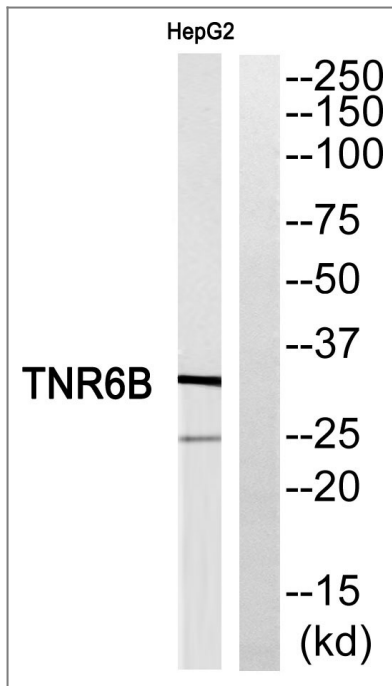
Target Information

Gene name	TNFRSF6B		
Protein Name	Tumor necrosis factor receptor superfamily member 6B		
	Organism	Gene ID	UniProt ID
	Human	8771 ;	O95407 ;
Cellular Localization	Secreted.		
Tissue specificity	Detected in fetal lung, brain and liver. Detected in adult stomach, spinal cord, lymph node, trachea, spleen, colon and lung. Highly expressed in several primary tumors from colon, stomach, rectum, esophagus and in SW480 colon carcinoma cells.		
Function	Alternative products:Additional isoforms seem to exist,Function:ATP-dependent DNA helicase required to suppress inappropriate homologous recombination, thereby playing a central role DNA repair and in the maintenance of genomic stability. Antagonizes homologous recombination by promoting the disassembly of D loop recombination intermediates. Also required to regulate telomere length; probably due to its anti-recombinase function.,Function:Decoy receptor for the cytotoxic ligands TNFS14/LIGHT and TNFSF6/FASL. Protects against apoptosis.,miscellaneous:Amplified in gastric tumors.,similarity:Belongs to the helicase family. RAD3/XPD subfamily.,similarity:Contains 1 helicase ATP-binding domain.,similarity:Contains 4 TNFR-Cys repeats.,tissue specificity:Detected in fetal lung, brain and liver. Detected in adult stomach, spinal cord, lymph node, trachea, spleen, colon and lung. Highly expressed in several primary tumors from colon, stomach, rectum, esophagus and in SW480 colon carcinoma cells.,		

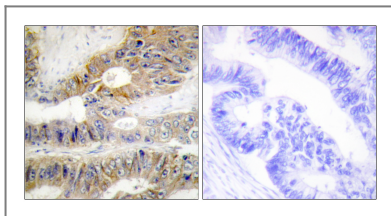
Validation Data



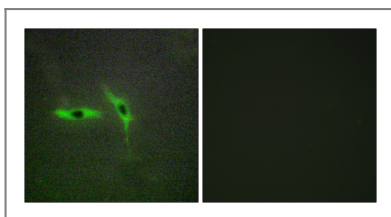
Western Blot analysis of various cells using DcR3 Polyclonal Antibody cells nucleus extracted by Minute TM Cytoplasmic and Nuclear Fractionation kit (SC-003, Invent biotech, MN, USA).



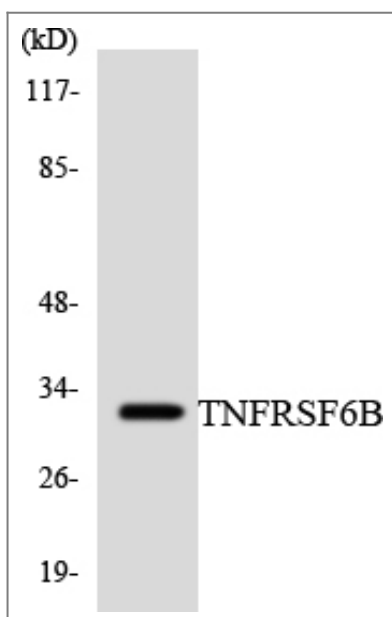
Western blot analysis of TNFRSF6B Antibody. The lane on the right is blocked with the TNFRSF6B peptide.



Immunohistochemistry analysis of paraffin-embedded human colon carcinoma, using TNFRSF6B Antibody. The lane on the right is blocked with the TNFRSF6B peptide.



Immunofluorescence analysis of TNFRSF6B Antibody. The lane on the right is blocked with the TNFRSF6B peptide.



Western blot analysis of the lysates from HT-29 cells using TNFRSF6B antibody.

Orders: order@immunoway.com
Support: tech@immunoway.com
Telephone: 877-594-3616 (Toll Free), 408-747-0185
Website: <http://www.immunoway.com>
Address: 2200 Ringwood Ave San Jose, CA 95131 USA



Please scan the QR code
to access additional
product information:
DcR3 Rabbit pAb

For Research Use Only. Not for Use in Diagnostic Procedures.

[Antibody](#) | [ELISA Kits](#) | [Protein](#) | [Reagents](#)