

DAN Rabbit pAb

CatalogNo: YT1284

Key Features

Host Species

- Rabbit

Reactivity

- Human,Rat,Mouse,

Applications

- WB,IHC,IF,ELISA

MW

- 19kD (Observed)

Isotype

- IgG

Recommended Dilution Ratios

WB 1:500-1:2000

IHC 1:100-1:300

IF 1:200-1:1000

ELISA 1:20000

Not yet tested in other applications.

Storage

Storage*

-15°C to -25°C/1 year(Do not lower than -25°C)

Formulation

Liquid in PBS containing 50% glycerol, 0.5% BSA and 0.02% sodium azide.

Basic Information

Clonality

Polyclonal

Immunogen Information

Immunogen

The antiserum was produced against synthesized peptide derived from human NBL1. AA range:131-180

Specificity

DAN Polyclonal Antibody detects endogenous levels of DAN protein.

Target Information

Gene name NBL1

Protein Name Neuroblastoma suppressor of tumorigenicity 1

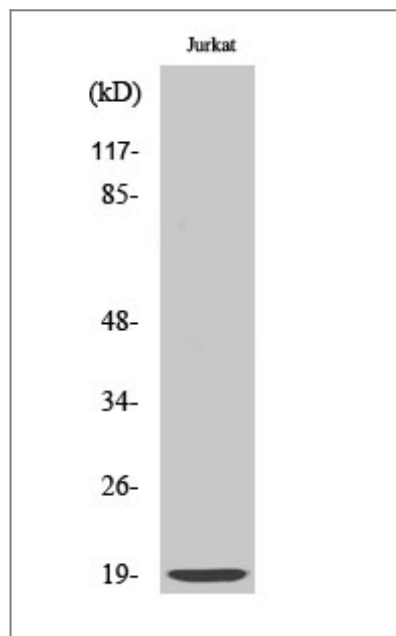
Organism	Gene ID	UniProt ID
Human	4681 ; 100532736 ;	P41271 ;
Mouse		Q61477 ;

Cellular Localization Secreted.

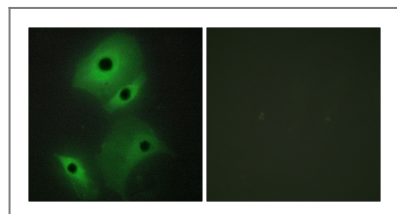
Tissue specificity Most abundant in normal lung and meningioma.

Function Disease:Defects in NBL1 are possibly the cause of the development and/or progression of human neuroblastoma.,Function:Possible candidate as a tumor suppressor gene of neuroblastoma. May play an important role in preventing cells from entering the final stage (G1/S) of the transformation process.,similarity:Belongs to the DAN family.,similarity:Contains 1 CTCK (C-terminal cystine knot-like) domain.,tissue specificity:Most abundant in normal lung and meningioma.,

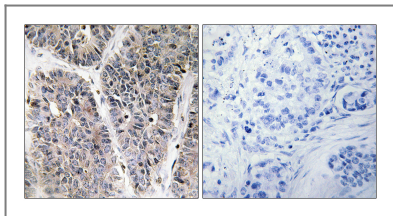
Validation Data



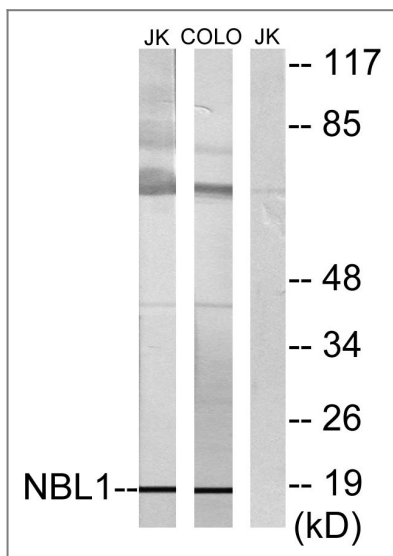
Western Blot analysis of various cells using DAN Polyclonal Antibody diluted at 1:500



Immunofluorescence analysis of HeLa cells, using NBL1 Antibody. The picture on the right is blocked with the synthesized peptide.



Immunohistochemistry analysis of paraffin-embedded human lung carcinoma tissue, using NBL1 Antibody. The picture on the right is blocked with the synthesized peptide.



Western blot analysis of lysates from Jurkat and COLO cells, using NBL1 Antibody. The lane on the right is blocked with the synthesized peptide.

Contact information

Orders: order@immunoway.com
 Support: tech@immunoway.com
 Telephone: 877-594-3616 (Toll Free), 408-747-0185
 Website: <http://www.immunoway.com>
 Address: 2200 Ringwood Ave San Jose, CA 95131 USA



Please scan the QR code to access additional product information:
DAN Rabbit pAb

For Research Use Only. Not for Use in Diagnostic Procedures.

[Antibody](#) | [ELISA Kits](#) | [Protein](#) | [Reagents](#)