

D4DR Rabbit pAb

CatalogNo: YT1278

Orthogonal Validated 

Key Features

Host Species

- Rabbit

Reactivity

- Human, Mouse, Rat

Applications

- WB, IF, ELISA

MW

- 48kD (Observed)

Isotype

- IgG

Recommended Dilution Ratios

WB 1:500-1:2000**IF 1:200-1:1000****ELISA 1:40000****Not yet tested in other applications.**

Storage

Storage*

-15°C to -25°C/1 year(Do not lower than -25°C)

Formulation

Liquid in PBS containing 50% glycerol, 0.5% BSA and 0.02% sodium azide.

Basic Information

Clonality

Polyclonal

Immunogen Information

Immunogen

The antiserum was produced against synthesized peptide derived from human DRD4. AA range:355-404

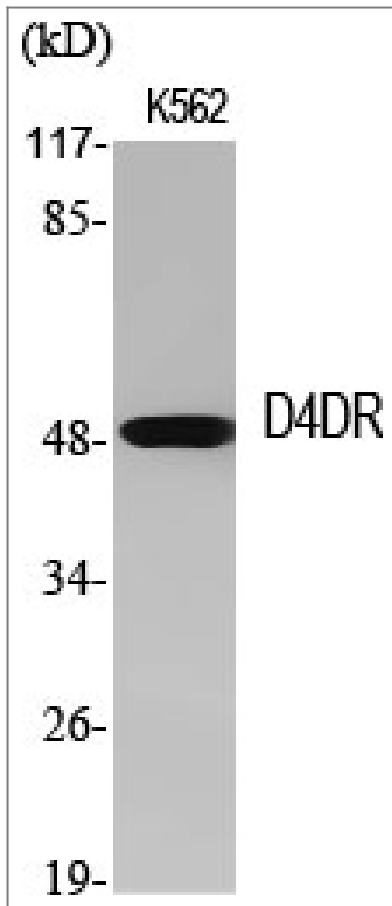
Specificity

D4DR Polyclonal Antibody detects endogenous levels of D4DR protein.

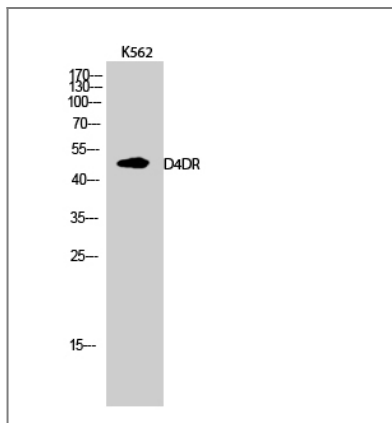
Target Information

Gene name	DRD4		
Protein Name	D(4) dopamine receptor		
	Organism	Gene ID	UniProt ID
	Human	1815 ;	P21917 ;
	Mouse	13491 ;	P51436 ;
	Rat	25432 ;	P30729 ;
Cellular Localization	Cell membrane ; Multi-pass membrane protein .		
Tissue specificity	Highly expressed in retina. Detected at much lower levels in brain, in amygdala, thalamus, hypothalamus, cerebellum and pituitary.		
Function	Function:This is one of the five types (D1 to D5) of receptors for dopamine. The activity of this receptor is mediated by G proteins which inhibit adenylyl cyclase.,polymorphism:The number of repeats of 16 amino acids in the third cytoplasmic loop is highly polymorphic and varies among different alleles. Alleles corresponding in size to a 2 (D4.2), 3 (D4.3), 4 (D4.4), 5 (D4.5), 6 (D4.6), 7 (D4.7) and 9 (D4.9) repeats have been described. The sequence shown is that of allele D4.7. The polymorphic repeat sequence has little influence on DRD4-binding profiles and might not be essential for G protein interaction.,similarity:Belongs to the G-protein coupled receptor 1 family.,subunit:Interacts with CLIC6 (By similarity) and GPRASP1.,		

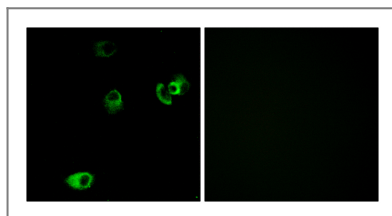
| Validation Data



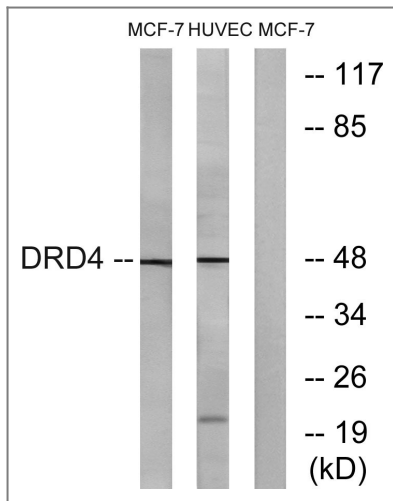
Western Blot analysis of various cells using D4DR Polyclonal Antibody



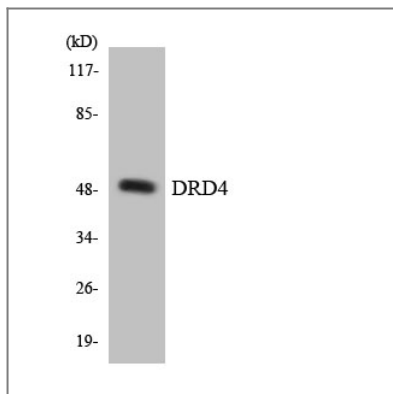
Western Blot analysis of K562 cells using D4DR Polyclonal Antibody



Immunofluorescence analysis of MCF7 cells, using DRD4 Antibody. The picture on the right is blocked with the synthesized peptide.



Western blot analysis of lysates from MCF-7 and HUVEC cells, using DRD4 Antibody. The lane on the right is blocked with the synthesized peptide.



Western blot analysis of the lysates from RAW264.7 cells using DRD4 antibody.

Contact information

Orders: order@immunoway.com
 Support: tech@immunoway.com
 Telephone: 877-594-3616 (Toll Free), 408-747-0185
 Website: <http://www.immunoway.com>
 Address: 2200 Ringwood Ave San Jose, CA 95131 USA



Please scan the QR code to access additional product information:
D4DR Rabbit pAb

For Research Use Only. Not for Use in Diagnostic Procedures.

[Antibody](#) | [ELISA Kits](#) | [Protein](#) | [Reagents](#)