

Cystatin E/M Rabbit pAb

CatalogNo: YT1252

Key Features

Host Species

- Rabbit

Reactivity

- Human

Applications

- IHC,IF,ELISA

MW

- 17kD (Calculated)

Isotype

- IgG

Recommended Dilution Ratios

IHC 1:100-1:300

ELISA 1:40000

IF 1:50-200

Storage

Storage* -15°C to -25°C/1 year(Do not lower than -25°C)

Formulation Liquid in PBS containing 50% glycerol, 0.5% BSA and 0.02% sodium azide.

Basic Information

Clonality Polyclonal

Immunogen Information

Immunogen Synthesized peptide derived from the Internal region of human Cystatin E/M.

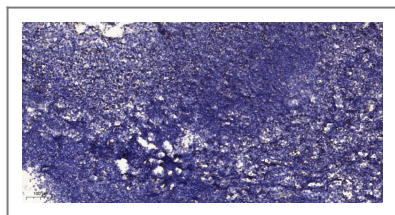
Specificity Cystatin E/M Polyclonal Antibody detects endogenous levels of Cystatin E/M protein.

Target Information

Gene name CST6

Protein Name	Cystatin-M		
	Organism	Gene ID	UniProt ID
	Human	1474;	Q15828;
Cellular Localization	Secreted.		
Tissue specificity	Restricted to the stratum granulosum of normal skin, the stratum granulosum/spinosum of psoriatic skin, and the secretory coils of eccrine sweat glands. Low expression levels are found in the nasal cavity.		
Function	Function:Shows moderate inhibition of cathepsin B but is not active against cathepsin C.,PTM:Substrate for transglutaminases. Acts as an acyl acceptor but not as an acyl donor.,similarity:Belongs to the cystatin family.,tissue specificity:Restricted to the stratum granulosum of normal skin, the stratum granulosum/spinosum of psoriatic skin, and the secretory coils of eccrine sweat glands. Low expression levels are found in the nasal cavity.,		

Validation Data



Immunohistochemical analysis of paraffin-embedded human tonsil. 1, Antibody was diluted at 1:200(4° overnight). 2, Tris-EDTA,pH9.0 was used for antigen retrieval. 3,Secondary antibody was diluted at 1:200(room temperature, 30min).

Contact information

Orders: order@immunoway.com
 Support: tech@immunoway.com
 Telephone: 877-594-3616 (Toll Free), 408-747-0185
 Website: <http://www.immunoway.com>
 Address: 2200 Ringwood Ave San Jose, CA 95131 USA



Please scan the QR code to access additional product information:
Cystatin E/M Rabbit pAb

For Research Use Only. Not for Use in Diagnostic Procedures.

[Antibody](#) | [ELISA Kits](#) | [Protein](#) | [Reagents](#)