

CYP3A4 Rabbit pAb

CatalogNo: YT1228

Orthogonal Validated 

Key Features

Host Species

- Rabbit

Reactivity

- Human

Applications

- WB,IHC,IF,ELISA

MW

- 57kD (Observed)

Isotype

- IgG

Recommended Dilution Ratios

WB 1:500-1:2000**IHC 1:100-1:300****ELISA 1:5000****IF 1:50-200**

Storage

Storage*

-15°C to -25°C/1 year(Do not lower than -25°C)

Formulation

Liquid in PBS containing 50% glycerol, 0.5% BSA and 0.02% sodium azide.

Basic Information

Clonality

Polyclonal

Immunogen Information

Immunogen

The antiserum was produced against synthesized peptide derived from human Cytochrome P450 3A4. AA range:91-140

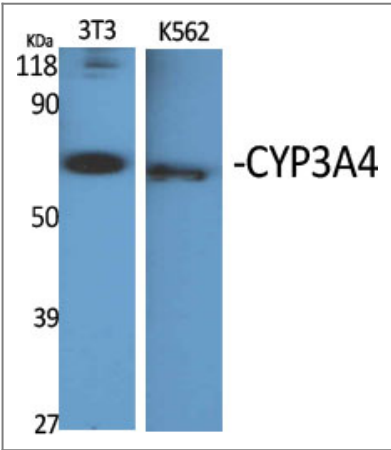
Specificity

CYP3A4 Polyclonal Antibody detects endogenous levels of CYP3A4 protein.

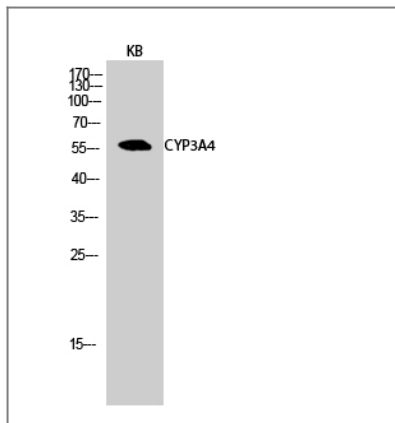
Target Information

Gene name	CYP3A4		
Protein Name	Cytochrome P450 3A4		
	Organism	Gene ID	UniProt ID
	Human	1576 ;	P08684 ;
Cellular Localization	Endoplasmic reticulum membrane; Single-pass membrane protein. Microsome membrane ; Single-pass membrane protein.		
Tissue specificity	Expressed in prostate and liver. According to some authors, it is not expressed in brain (PubMed:19094056). According to others, weak levels of expression are measured in some brain locations (PubMed:19359404 and PubMed:18545703). Also expressed in epithelium of the small intestine and large intestine, bile duct, nasal mucosa, kidney, adrenal cortex, epithelium of the gastric mucosa with intestinal metaplasia, gallbladder, intercalated ducts of the pancreas, chief cells of the parathyroid and the corpus luteum of the ovary (at protein level).		
Function	Catalytic activity:Albendazole + NADPH + O(2) = albendazole S-oxide + NADP(+) + H(2)O.,Catalytic activity:Lithocholate + NADPH + O(2) = hyodeoxycholate + NADP(+) + H(2)O.,Catalytic activity:Quinine + NADPH + O(2) = 3-hydroxyquinine + NADP(+) + H(2)O.,Catalytic activity:Taurochenodeoxycholate + NADPH + O(2) = taurohyocholate + NADP(+) + H(2)O.,cofactor:Heme group.,Function:Cytochromes P450 are a group of heme-thiolate monooxygenases. In liver microsomes, this enzyme is involved in an NADPH-dependent electron transport pathway. It performs a variety of oxidation reactions (e.g. caffeine 8-oxidation, omeprazole sulphoxidation, midazolam 1'-hydroxylation and midazolam 4-hydroxylation) of structurally unrelated compounds, including steroids, fatty acids, and xenobiotics. The enzyme also hydroxylates etoposide.,induction:By glucocorticoids. Also induced to high levels in liver and other tissues by various foreign compounds, including drugs, pesticides, and carcinogens.,online information:CYP3A4 alleles,online information:CYP3A4 entry,similarity:Belongs to the cytochrome P450 family.,tissue specificity:Expressed in prostate and liver.,		

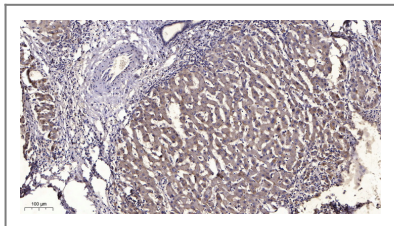
| Validation Data



Western Blot analysis of various cells using CYP3A4 Polyclonal Antibody diluted at 1:1000



Western Blot analysis of KB cells using CYP3A4 Polyclonal Antibody diluted at 1:1000



Immunohistochemical analysis of paraffin-embedded human liver cancer. 1, Antibody was diluted at 1:200(4° overnight). 2, Tris-EDTA,pH9.0 was used for antigen retrieval. 3,Secondary antibody was diluted at 1:200(room temperature, 45min).

Contact information

Orders: order@immunoway.com
 Support: tech@immunoway.com
 Telephone: 877-594-3616 (Toll Free), 408-747-0185
 Website: <http://www.immunoway.com>
 Address: 2200 Ringwood Ave San Jose, CA 95131 USA



Please scan the QR code to access additional product information:
CYP3A4 Rabbit pAb

For Research Use Only. Not for Use in Diagnostic Procedures.

[Antibody](#) | [ELISA Kits](#) | [Protein](#) | [Reagents](#)