

CYP24A1 Rabbit pAb

CatalogNo: YT1198

Key Features

Host Species

- Rabbit

Reactivity

- Human,Rat,Mouse,

Applications

- WB,IHC,IF,ELISA

MW

- 38kD (Observed)

Isotype

- IgG

Recommended Dilution Ratios

WB 1:500-1:2000

IHC 1:100-1:300

ELISA 1:10000

IF 1:50-200

Storage

Storage*

-15°C to -25°C/1 year(Do not lower than -25°C)

Formulation

Liquid in PBS containing 50% glycerol, 0.5% BSA and 0.02% sodium azide.

Basic Information

Clonality

Polyclonal

Immunogen Information

Immunogen

The antiserum was produced against synthesized peptide derived from human Cytochrome P450 24A1. AA range:411-460

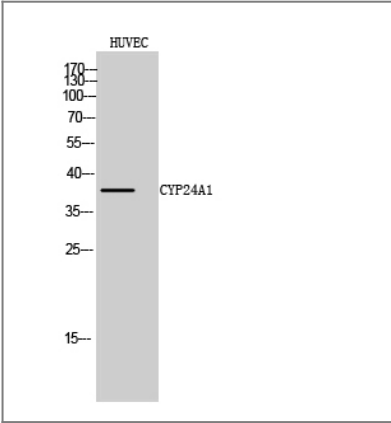
Specificity

CYP24A1 Polyclonal Antibody detects endogenous levels of CYP24A1 protein.

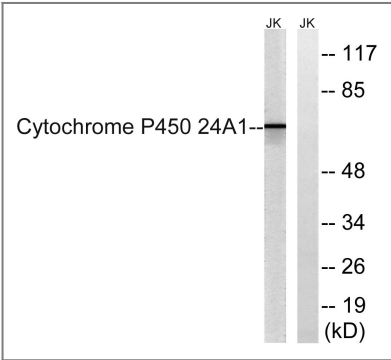
Target Information

Gene name	CYP24A1		
Protein Name	1,25-dihydroxyvitamin D(3) 24-hydroxylase mitochondrial		
	Organism	Gene ID	UniProt ID
	Human	1591 ;	Q07973 ;
	Mouse		Q64441 ;
Cellular Localization	Mitochondrion .		
Tissue specificity	PCR rescued clones,		
Function	Catalytic activity:Calcidiol + NADPH + O(2) = secalciferol + NADP(+) + H(2)O.,Catalytic activity:Calcitriol + NADPH + O(2) = calcitretol + NADP(+) + H(2)O.,cofactor:Heme group.,Function:Has a role in maintaining calcium homeostasis. Catalyzes the NADPH-dependent 24-hydroxylation of calcidiol (25-hydroxyvitamin D(3)) and calcitriol (1-alpha,25-dihydroxyvitamin D(3)). The enzyme can perform up to 6 rounds of hydroxylation of calcitriol leading to calcitroic acid. It also shows 23-hydroxylating activity leading to 1-alpha,25-dihydroxyvitamin D(3)-26,23-lactone as end product.,similarity:Belongs to the cytochrome P450 family.,		

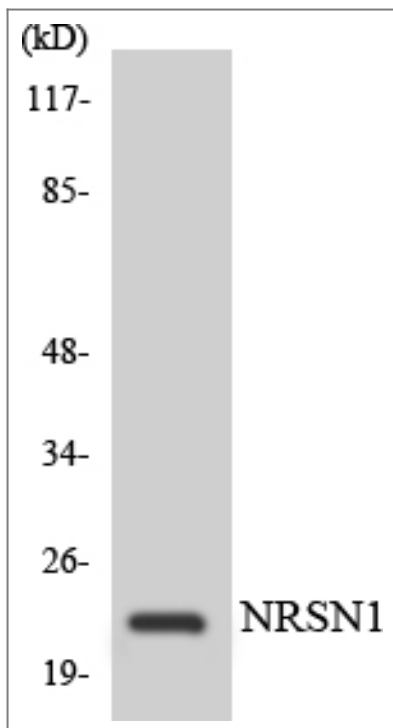
Validation Data



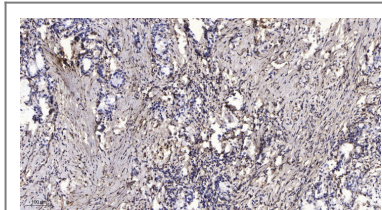
Western Blot analysis of HUVEC cells using CYP24A1 Polyclonal Antibody



Western blot analysis of lysates from JurKat cells, using Cytochrome P450 24A1 Antibody. The lane on the right is blocked with the synthesized peptide.



Western blot analysis of the lysates from RAW264.7 cells using C56D2 antibody.



Immunohistochemical analysis of paraffin-embedded human Gastric adenocarcinoma. 1, Antibody was diluted at 1:200 (4° overnight). 2, Tris-EDTA, pH 9.0 was used for antigen retrieval. 3, Secondary antibody was diluted at 1:200 (room temperature, 45 min).

Contact information

Orders: order@immunoway.com
 Support: tech@immunoway.com
 Telephone: 877-594-3616 (Toll Free), 408-747-0185
 Website: <http://www.immunoway.com>
 Address: 2200 Ringwood Ave San Jose, CA 95131 USA



Please scan the QR code to access additional product information:
CYP24A1 Rabbit pAb

For Research Use Only. Not for Use in Diagnostic Procedures.

[Antibody](#) | [ELISA Kits](#) | [Protein](#) | [Reagents](#)