

CTPS Rabbit pAb

CatalogNo: YT1153

Key Features

Host Species

- Rabbit

Reactivity

- Human, Mouse, Rat

Applications

- WB, IHC, IF, ELISA

MW

- 67kD (Observed)

Isotype

- IgG

Recommended Dilution Ratios

WB 1:500-1:2000

IHC 1:100-1:300

ELISA 1:10000

IF 1:50-200

Storage

Storage*

-15°C to -25°C/1 year (Do not lower than -25°C)

Formulation

Liquid in PBS containing 50% glycerol, 0.5% BSA and 0.02% sodium azide.

Basic Information

Clonality

Polyclonal

Immunogen Information

Immunogen

The antiserum was produced against synthesized peptide derived from human CTPS. AA range: 60-109

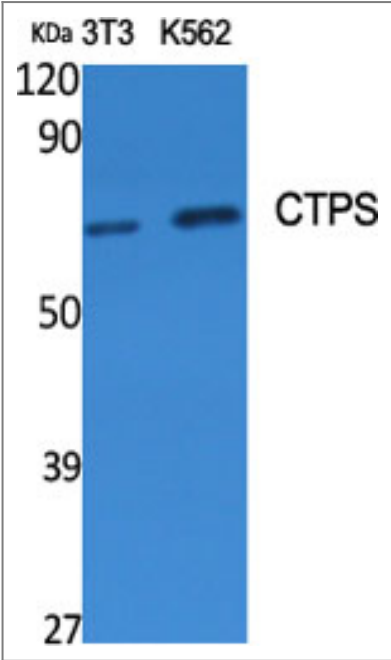
Specificity

CTPS Polyclonal Antibody detects endogenous levels of CTPS protein.

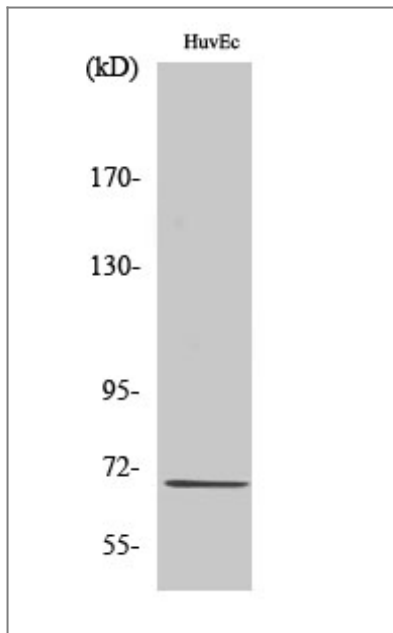
Target Information

Gene name	CTPS1		
Protein Name	CTP synthase 1		
	Organism	Gene ID	UniProt ID
	Human	1503 ;	P17812 ;
	Mouse	51797 ;	P70698 ;
Cellular Localization	Cytoplasm, cytosol . Mainly cytosolic but when active detected in long filamentous structures (PubMed:25223282). Co-localizes with TNK2 in the cytosolic filaments (By similarity). .		
Tissue specificity	Widely expressed.		
Function	Catalytic activity:ATP + UTP + NH(3) = ADP + phosphate + CTP.,enzyme regulation:Activated by GTP and inhibited by CTP.,Function:Catalyzes the ATP-dependent amination of UTP to CTP with either L-glutamine or ammonia as the source of nitrogen.,pathway:Pyrimidine metabolism; CTP biosynthesis via de novo pathway; CTP from UDP: step 2/2.,similarity:Belongs to the CTP synthase family.,similarity:Contains 1 glutamine amidotransferase type-1 domain.,		

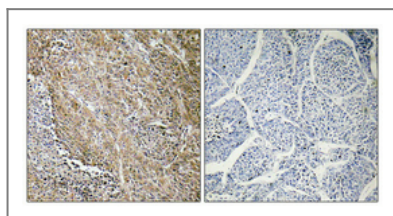
| Validation Data



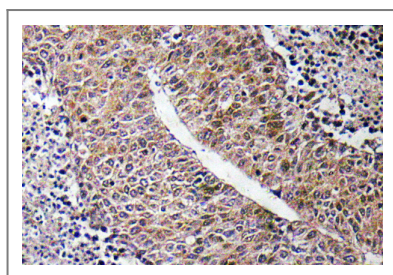
Western Blot analysis of various cells using CTPS Polyclonal Antibody diluted at 1:500



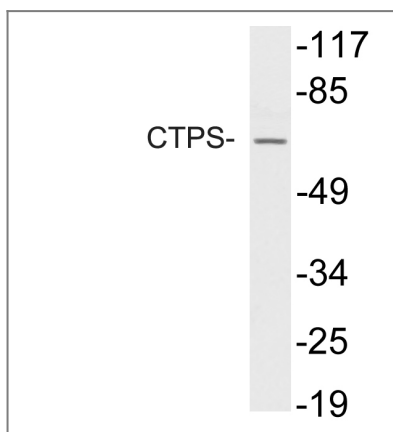
Western Blot analysis of HuvEc cells using CTPS Polyclonal Antibody diluted at 1:500



Immunohistochemical analysis of paraffin-embedded Human lung cancer. Antibody was diluted at 1:100(4° overnight). High-pressure and temperature Tris-EDTA,pH8.0 was used for antigen retrieval. Negative contrl (right) obtained from antibody was pre-absorbed by immunogen peptide.



Immunohistochemistry analysis of CTPS antibody in paraffin-embedded human liver carcinoma tissue.



Western blot analysis of lysate from HUVEC cells, using CTPS antibody.

Contact information

Orders: order@immunoway.com
Support: tech@immunoway.com
Telephone: 877-594-3616 (Toll Free), 408-747-0185
Website: <http://www.immunoway.com>
Address: 2200 Ringwood Ave San Jose, CA 95131 USA



Please scan the QR code
to access additional
product information:
CTPS Rabbit pAb

For Research Use Only. Not for Use in Diagnostic Procedures.

[Antibody](#) | [ELISA Kits](#) | [Protein](#) | [Reagents](#)