

CSN3 Rabbit pAb

CatalogNo: YT1134

Key Features

Host Species

- Rabbit

Reactivity

- Human, Mouse, Rat

Applications

- WB, IHC, IF, ELISA

MW

- 47kD (Observed)

Isotype

- IgG

Recommended Dilution Ratios

WB 1:500-1:2000

IHC 1:100-1:300

IF 1:200-1:1000

ELISA 1:10000

Not yet tested in other applications.

Storage

Storage*

-15°C to -25°C/1 year (Do not lower than -25°C)

Formulation

Liquid in PBS containing 50% glycerol, 0.5% BSA and 0.02% sodium azide.

Basic Information

Clonality

Polyclonal

Immunogen Information

Immunogen

The antiserum was produced against synthesized peptide derived from human JAB1. AA range: 374-423

Specificity

CSN3 Polyclonal Antibody detects endogenous levels of CSN3 protein.

| Target Information

Gene name COPS3

Protein Name COP9 signalosome complex subunit 3

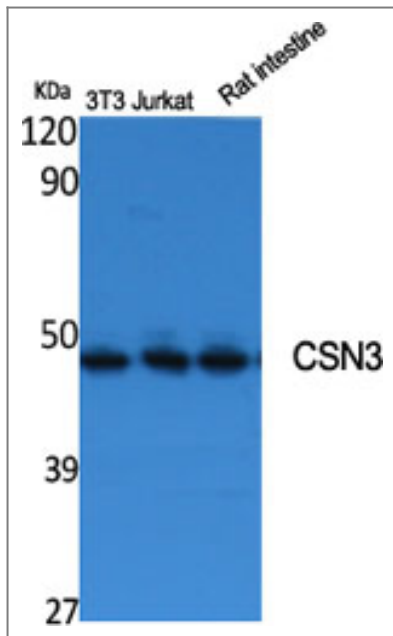
Organism	Gene ID	UniProt ID
Human	8533 ;	Q9UNS2 ;
Mouse	26572 ;	O88543 ;
Rat	287367 ;	Q68FW9 ;

Cellular Localization Cytoplasm . Nucleus .

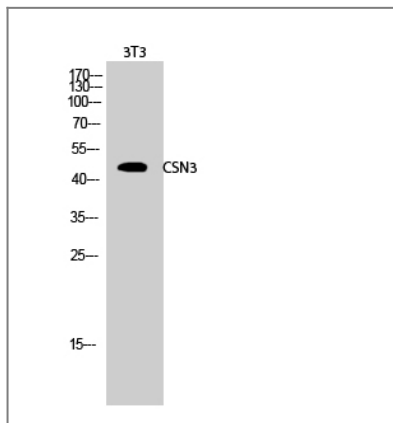
Tissue specificity Widely expressed. Expressed at high level in heart and skeletal muscle.

Function Function:Component of the COP9 signalosome complex (CSN), a complex involved in various cellular and developmental processes. The CSN complex is an essential regulator of the ubiquitin (Ubl) conjugation pathway by mediating the deneddylation of the cullin subunits of SCF-type E3 ligase complexes, leading to decrease the Ubl ligase activity of SCF-type complexes such as SCF, CSA or DDB2. The complex is also involved in phosphorylation of p53/TP53, c-jun/JUN, IkappaBalpha/NFKBIA, ITPK1 and IRF8/ICSBP, possibly via its association with CK2 and PKD kinases. CSN-dependent phosphorylation of TP53 and JUN promotes and protects degradation by the Ubl system, respectively.,miscellaneous:Amplified and overexpressed in some osteosarcomas (OS), suggesting that it may participate in TP53 degradation in OS.,PTM:Phosphorylated upon DNA damage, probably by ATM or ATR.,similarity:Belongs to the CSN3 family.,similarity:Contains 1 PCI domain.,subunit:Component of the CSN complex, composed of COPS1/GPS1, COPS2, COPS3, COPS4, COPS5, COP6, COPS7 (COPS7A or COPS7B) and COPS8. In the complex, it probably interacts directly with COPS1, COPS4 and COPS8. Interacts with CK2 and PKD. Interacts with the translation initiation factor EIF3S6 and IKBKG.,tissue specificity:Widely expressed. Expressed at high level in heart and skeletal muscle.,

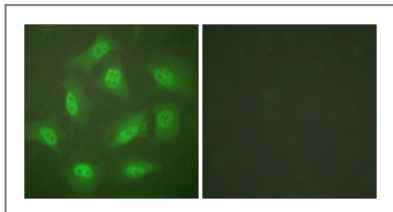
| Validation Data



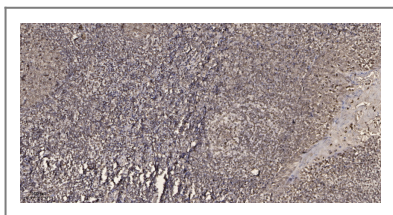
Western Blot analysis of various cells using CSN3 Polyclonal Antibody



Western Blot analysis of 3T3 cells using CSN3 Polyclonal Antibody



Immunofluorescence analysis of HeLa cells, using JAB1 Antibody. The picture on the right is blocked with the synthesized peptide.



Immunohistochemical analysis of paraffin-embedded human tonsil. 1, Antibody was diluted at 1:200(4° overnight). 2, Tris-EDTA,pH9.0 was used for antigen retrieval. 3,Secondary antibody was diluted at 1:200(room temperature, 45min).

Contact information

Orders: order@immunoway.com
 Support: tech@immunoway.com
 Telephone: 877-594-3616 (Toll Free), 408-747-0185
 Website: <http://www.immunoway.com>
 Address: 2200 Ringwood Ave San Jose, CA 95131 USA



Please scan the QR code to access additional product information:
CSN3 Rabbit pAb

