

CRSP150 Rabbit pAb

CatalogNo: YT1121

Key Features

Host Species

- Rabbit

Reactivity

- Human, Mouse

Applications

- IHC, IF, ELISA

MW

- 161kD (Calculated)

Isotype

- IgG

Recommended Dilution Ratios

IHC 1:100-1:300

IF 1:200-1:1000

ELISA 1:40000

Not yet tested in other applications.

Storage

Storage*

-15°C to -25°C/1 year (Do not lower than -25°C)

Formulation

Liquid in PBS containing 50% glycerol, 0.5% BSA and 0.02% sodium azide.

Basic Information

Clonality

Polyclonal

Immunogen Information

Immunogen

The antiserum was produced against synthesized peptide derived from human MED14. AA range: 701-750

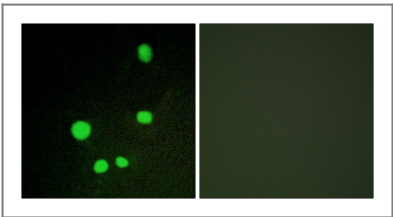
Specificity

CRSP150 Polyclonal Antibody detects endogenous levels of CRSP150 protein.

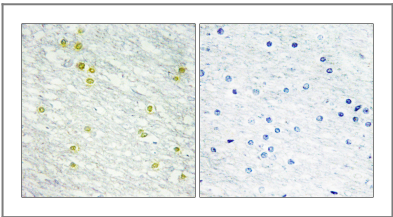
Target Information

Gene name	MED14									
Protein Name	Mediator of RNA polymerase II transcription subunit 14									
	<table><tr><th>Organism</th><th>Gene ID</th><th>UniProt ID</th></tr><tr><td>Human</td><td>9282;</td><td>O60244;</td></tr><tr><td>Mouse</td><td>26896;</td><td>A2ABV5;</td></tr></table>	Organism	Gene ID	UniProt ID	Human	9282;	O60244;	Mouse	26896;	A2ABV5;
Organism	Gene ID	UniProt ID								
Human	9282;	O60244;								
Mouse	26896;	A2ABV5;								
Cellular Localization	Nucleus .									
Tissue specificity	Ubiquitous.									
Function	<p>Function:Component of the Mediator complex, a coactivator involved in the regulated transcription of nearly all RNA polymerase II-dependent genes. Mediator functions as a bridge to convey information from gene-specific regulatory proteins to the basal RNA polymerase II transcription machinery. Mediator is recruited to promoters by direct interactions with regulatory proteins and serves as a scaffold for the assembly of a functional preinitiation complex with RNA polymerase II and the general transcription factors.,similarity:Belongs to the Mediator complex subunit 14 family.,subunit:Interacts with GATA1 (By similarity). Component of the Mediator complex, which is composed of MED1, MED4, MED6, MED7, MED8, MED9, MED10, MED11, MED12, MED13, MED13L, MED14, MED15, MED16, MED17, MED18, MED19, MED20, MED21, MED22, MED23, MED24, MED25, MED26, MED27, MED29, MED30, MED31, CCNC, CDK8 and CDC2L6/CDK11. The MED12, MED13, CCNC and CDK8 subunits form a distinct module termed the CDK8 module. Mediator containing the CDK8 module is less active than Mediator lacking this module in supporting transcriptional activation. Individual preparations of the Mediator complex lacking one or more distinct subunits have been variously termed ARC, CRSP, DRIP, PC2, SMCC and TRAP. Interacts with AR, ESR1, SREBF1 and STAT2.,tissue specificity:Ubiquitous.,</p>									

| Validation Data



Immunofluorescence analysis of COS7 cells, using MED14 Antibody. The picture on the right is blocked with the synthesized peptide.



Immunohistochemistry analysis of paraffin-embedded human brain tissue, using MED14 Antibody. The picture on the right is blocked with the synthesized peptide.

| Contact information

Orders: order@immunoway.com
Support: tech@immunoway.com
Telephone: 877-594-3616 (Toll Free), 408-747-0185
Website: <http://www.immunoway.com>
Address: 2200 Ringwood Ave San Jose, CA 95131 USA



Please scan the QR code
to access additional
product information:
**CRSP150 Rabbit
pAb**

For Research Use Only. Not for Use in Diagnostic Procedures.

[Antibody](#) | [ELISA Kits](#) | [Protein](#) | [Reagents](#)