

CRIF1 Rabbit pAb

CatalogNo: YT1111

| Key Features

Host Species

- Rabbit

Reactivity

- Human,Rat,Mouse,

Applications

- IHC,IF,ELISA

MW

- 25kD (Calculated)

Isotype

- IgG

| Recommended Dilution Ratios

IHC 1:100-1:300

ELISA 1:40000

IF 1:50-200

| Storage

Storage*

-15°C to -25°C/1 year(Do not lower than -25°C)

Formulation

Liquid in PBS containing 50% glycerol, 0.5% BSA and 0.02% sodium azide.

| Basic Information

Clonality

Polyclonal

| Immunogen Information

Immunogen

The antiserum was produced against synthesized peptide derived from human GADD45GIP1. AA range:91-140

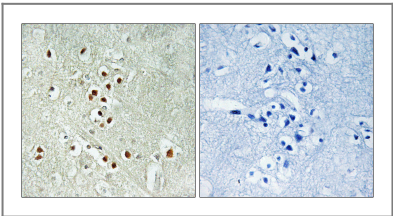
Specificity

CRIF1 Polyclonal Antibody detects endogenous levels of CRIF1 protein.

| Target Information

Gene name	GADD45GIP1		
Protein Name	Growth arrest and DNA damage-inducible proteins-interacting protein 1		
	Organism	Gene ID	UniProt ID
	Human	90480 ;	Q8TAE8 ;
	Mouse		Q9CR59 ;
Cellular Localization	Mitochondrion . Nucleus . Using N-terminally tagged constructs, has been found in the nucleus (PubMed:12482659). C-terminally tagged constructs are targeted exclusively to mitochondria (PubMed:22453275). This discrepancy may be explained by masking of a potential N-terminal mitochondrial targeting signal by the tag (PubMed:22453275). .		
Tissue specificity	Widely expressed. Highly expressed in the thyroid gland, heart, lymph nodes, trachea and adrenal tissues. Expressed at lower level in liver skeletal muscle, kidney, pancreas, testis, ovary and stomach. Barely detectable in adrenal adenoma and papillary thyroid cancer.		
Function	Function:Acts as a negative regulator of G1 to S cell cycle phase progression by inhibiting cyclin-dependent kinases. Inhibitory effects are additive with GADD45 proteins but occurs also in the absence of GADD45 proteins. Acts as a repressor of the orphan nuclear receptor NR4A1 by inhibiting AB domain-mediated transcriptional activity. May be involved in the hormone-mediated regulation of NR4A1 transcriptional activity.,induction:Down-regulated by p53/TP53 in apoptotic cells.,miscellaneous:Cells overexpressing GADD45GIP1 were more likely to be in G1 and less likely to be in S phase and grow more slowly than control cells. Inhibiting the expression of GADD45GIP1 promotes cell cycle progression.,subunit:Interacts with GADD45A, GADD45B and GADD45G. Interacts with NR4A1 via the NR4A1 AB domain. Interacts with the human papilloma virus type 16 (HPV 16) minor capsid protein L2.,tissue specificity:Widely expressed. Highly expressed in the thyroid gland, heart, lymph nodes, trachea and adrenal tissues. Expressed at lower level in liver skeletal muscle, kidney, pancreas, testis, ovary and stomach. Barely detectable in adrenal adenoma and papillary thyroid cancer.,		

| Validation Data



Immunohistochemistry analysis of paraffin-embedded human brain, using GADD45GIP1 Antibody. The picture on the right is blocked with the synthesized peptide.

| Contact information

Orders: order@immunoway.com
Support: tech@immunoway.com
Telephone: 877-594-3616 (Toll Free), 408-747-0185
Website: <http://www.immunoway.com>
Address: 2200 Ringwood Ave San Jose, CA 95131 USA



Please scan the QR code
to access additional
product information:
CRIF1 Rabbit pAb

For Research Use Only. Not for Use in Diagnostic Procedures.

[Antibody](#) | [ELISA Kits](#) | [Protein](#) | [Reagents](#)