

CREB3L2 Rabbit pAb

CatalogNo: YT1104

| Key Features

Host Species

- Rabbit

Reactivity

- Human, Mouse, Rat

Applications

- WB, ELISA

MW

- 58kD (Observed)

Isotype

- IgG

| Recommended Dilution Ratios

WB 1:500-1:2000

ELISA 1:10000

Not yet tested in other applications.

| Storage

Storage* -15°C to -25°C/1 year (Do not lower than -25°C)

Formulation Liquid in PBS containing 50% glycerol, 0.5% BSA and 0.02% sodium azide.

| Basic Information

Clonality Polyclonal

| Immunogen Information

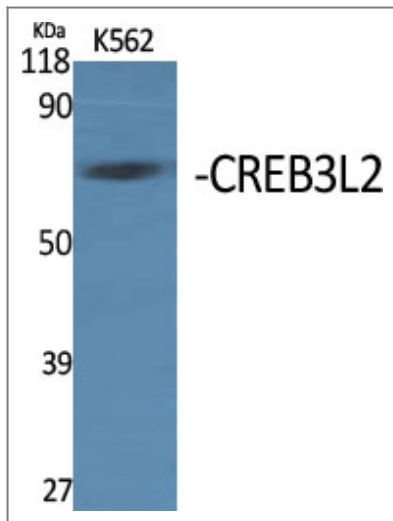
Immunogen The antiserum was produced against synthesized peptide derived from human CREB3L2. AA range: 269-318

Specificity CREB3L2 Polyclonal Antibody detects endogenous levels of CREB3L2 protein.

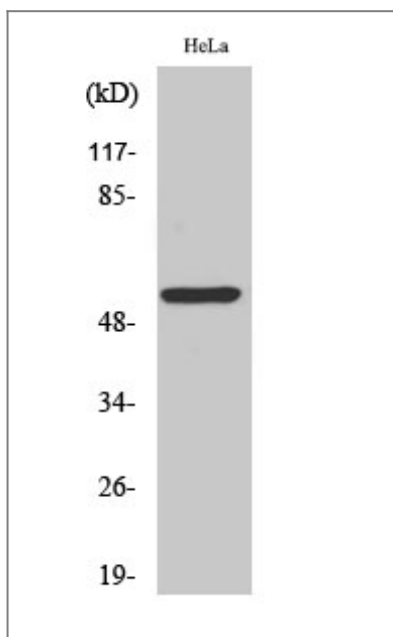
| Target Information

Gene name	CREB3L2		
Protein Name	Cyclic AMP-responsive element-binding protein 3-like protein 2		
	Organism	Gene ID	UniProt ID
	Human	64764 ;	Q70SY1 ;
	Mouse	208647 ;	Q8BH52 ;
	Rat	362339 ;	Q6QDP7 ;
Cellular Localization	Endoplasmic reticulum membrane ; Single-pass type II membrane protein. ER membrane resident protein. Upon ER stress, translocated to the Golgi apparatus where it is cleaved. The cytosolic N-terminal fragment (processed cyclic AMP-responsive element-binding protein 3-like protein 1) is transported into the nucleus. .; [Processed cyclic AMP-responsive element-binding protein 3-like protein 2]: Nucleus. Upon ER stress, translocated into the nucleus. .		
Tissue specificity	Widely expressed with highest levels in placenta, lung, spleen and intestine, and lowest levels in heart, brain, skeletal muscle, thymus, colon and leukocytes. In fetal tissues, the weakest expression is detected in brain and heart.		
Function	Disease:A chromosomal rearrangement involving CREB3L2 is found in low grade fibromyxoid sarcoma (LGFMS). Translocation t(7;16)(q33;p11) with FUS.,Function:Transcriptional activator that may act during endoplasmic reticulum stress late phase by activating unfolded protein response target genes. May play a role in preventing accumulation of unfolded proteins in damaged neurons. In vitro, binds to the cAMP response element (CRE) and activates transcription through CRE.,PTM:Controlled by regulated intramembrane proteolysis (RIP). Following ER stress a fragment containing the cytoplasmic transcription factor domain is released by proteolysis. The cleavage seems to be performed sequentially by site-1 and site-2 proteases (PS1 and PS2).,similarity:Belongs to the bZIP family.,similarity:Belongs to the bZIP family. ATF subfamily.,similarity:Contains 1 bZIP domain.,subcellular location:Under ER stress the cleaved N-terminal cytoplasmic domain translocates into the nucleus.,subunit:Binds DNA as a dimer.,tissue specificity:Widely expressed with highest levels in placenta, lung, spleen and intestine, and lowest levels in heart, brain, skeletal muscle, thymus, colon and leukocytes. In fetal tissues, the weakest expression is detected in brain and heart.,		

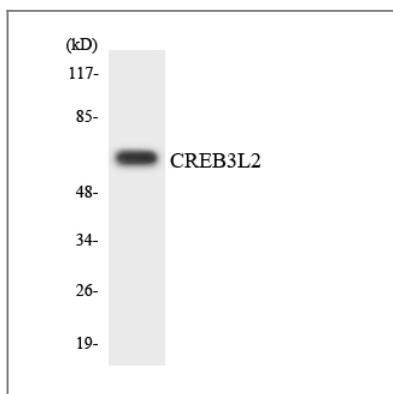
| Validation Data



Western Blot analysis of various cells using CREB3L2 Polyclonal Antibody



Western Blot analysis of HeLa cells using CREB3L2 Polyclonal Antibody



Western blot analysis of the lysates from 293 cells using CREB3L2 antibody.

| Contact information

Orders: order@immunoway.com
Support: tech@immunoway.com
Telephone: 877-594-3616 (Toll Free), 408-747-0185
Website: <http://www.immunoway.com>
Address: 2200 Ringwood Ave San Jose, CA 95131 USA



Please scan the QR code
to access additional
product information:
CREB3L2 Rabbit pAb

For Research Use Only. Not for Use in Diagnostic Procedures.

[Antibody](#) | [ELISA Kits](#) | [Protein](#) | [Reagents](#)