

CPZ Rabbit pAb

CatalogNo: YT1093

Key Features

Host Species

- Rabbit

Reactivity

- Human,Rat

Applications

- WB,ELISA

MW

- 73kD (Observed)

Isotype

- IgG

Recommended Dilution Ratios

WB 1:500-1:2000

ELISA 1:40000

Not yet tested in other applications.

Storage

Storage*

-15°C to -25°C/1 year(Do not lower than -25°C)

Formulation

Liquid in PBS containing 50% glycerol, 0.5% BSA and 0.02% sodium azide.

Basic Information

Clonality

Polyclonal

Immunogen Information

Immunogen

Synthesized peptide derived from CPZ . at AA range: 330-410

Specificity

CPZ Polyclonal Antibody detects endogenous levels of CPZ protein.

Target Information

Gene name

CPZ

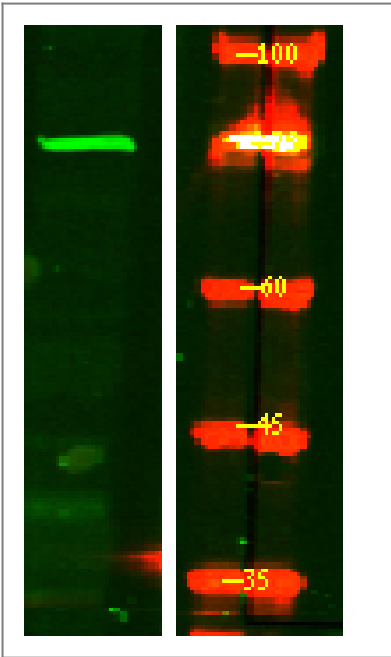
Protein Name	Carboxypeptidase Z		
	Organism	Gene ID	UniProt ID
	Human	8532;	Q66K79;
	Mouse		Q8R4V4;
	Rat	83575;	O54858;

Cellular Localization Secreted, extracellular space, extracellular matrix .

Tissue specificity In placenta, it is present within invasive trophoblasts and in the surrounding extracellular space. Also present in amnion cells, but is not readily apparent in the extracellular matrix of this cell type. Present in normal pituitary gland and neoplastic pituitary gland (especially POMC-, GH- and PRL-producing adenomas) (at protein level). Widely expressed.

Function cofactor: Binds 1 zinc ion per subunit., enzyme regulation: Inhibited by 2-mercaptomethyl-3-guanidinoethylthiopropionic acid (MGTA) and guanidinoethylmercaptosuccinic acid (GEMSA). Inhibited by chelating agents such as EDTA and EGTA., Function: Cleaves substrates with C-terminal arginine residues. Probably modulates the Wnt signaling pathway, by cleaving some undefined protein. May play a role in cleavage during prohormone processing., similarity: Belongs to the peptidase M14 family., similarity: Contains 1 FZ (frizzled) domain., tissue specificity: In placenta, it is present within invasive trophoblasts and in the surrounding extracellular space. Also present in amnion cells, but is not readily apparent in the extracellular matrix of this cell type. Present in normal pituitary gland and neoplastic pituitary gland (especially POMC-, GH- and PRL-producing adenomas) (at protein level). Widely expressed.,

Validation Data



Western Blot analysis of HEK293 lysis, using primary antibody at 1:1000 dilution. Secondary antibody(catalog#:RS23920) was diluted at 1:10000

| Contact information

Orders: order@immunoway.com
Support: tech@immunoway.com
Telephone: 877-594-3616 (Toll Free), 408-747-0185
Website: <http://www.immunoway.com>
Address: 2200 Ringwood Ave San Jose, CA 95131 USA



Please scan the QR code
to access additional
product information:
CPZ Rabbit pAb

For Research Use Only. Not for Use in Diagnostic Procedures.

[Antibody](#) | [ELISA Kits](#) | [Protein](#) | [Reagents](#)