

CPN Rabbit pAb

CatalogNo: YT1089

Key Features

Host Species

- Rabbit

Reactivity

- Human,Rat,Mouse,

Applications

- WB,ELISA

MW

- total 52kD,Cleaved 48kD (Observed)

Isotype

- IgG

Recommended Dilution Ratios

WB 1:500-1:2000

ELISA 1:20000

Not yet tested in other applications.

Storage

Storage* -15°C to -25°C/1 year(Do not lower than -25°C)

Formulation Liquid in PBS containing 50% glycerol, 0.5% BSA and 0.02% sodium azide.

Basic Information

Clonality Polyclonal

Immunogen Information

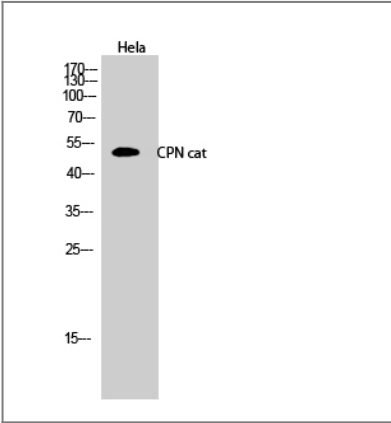
Immunogen The antiserum was produced against synthesized peptide derived from human CPN1. AA range:409-458

Specificity CPN cat Polyclonal Antibody detects endogenous levels of CPN cat protein.

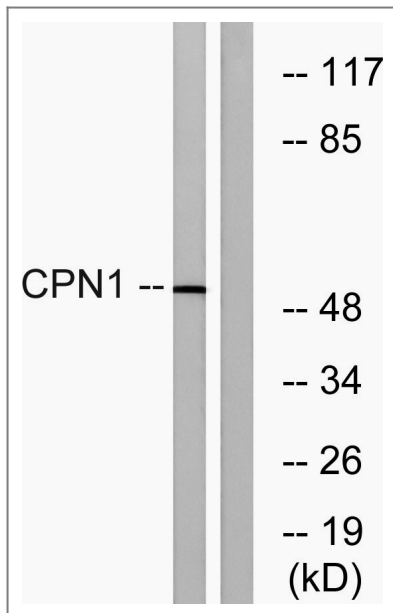
Target Information

Gene name	CPN1		
Protein Name	Carboxypeptidase N catalytic chain		
	Organism	Gene ID	UniProt ID
	Human	1369;	P15169;
	Mouse		Q9JJN5;
Cellular Localization	Secreted, extracellular space.		
Tissue specificity	Synthesized in the liver and secreted in plasma.		
Function	Catalytic activity:Release of a C-terminal basic amino acid, preferentially lysine.,cofactor:Binds 1 zinc ion per subunit.,Disease:Defects in CPN1 are the cause of carboxypeptidase N deficiency [MIM:212070]. Patients affected present some combination of angioedema or chronic urticaria, as well as hay fever or asthma, and have also slightly depressed serum carboxy peptidase N, suggestive of autosomal recessive inheritance of this disorder.,Function:Protects the body from potent vasoactive and inflammatory peptides containing C-terminal Arg or Lys (such as kinins or anaphylatoxins) which are released into the circulation.,similarity:Belongs to the peptidase M14 family.,subunit:Tetramer of two catalytic chains and two glycosylated inactive chains.,tissue specificity:Synthesized in the liver and secreted in plasma.,		

Validation Data



Western Blot analysis of HeLa cells using CPN cat Polyclonal Antibody



Western blot analysis of lysates from RAW264.7 cells, using CPN1 Antibody. The lane on the right is blocked with the synthesized peptide.

Contact information

Orders: order@immunoway.com
Support: tech@immunoway.com
Telephone: 877-594-3616 (Toll Free), 408-747-0185
Website: <http://www.immunoway.com>
Address: 2200 Ringwood Ave San Jose, CA 95131 USA



Please scan the QR code to access additional product information:
CPN Rabbit pAb

For Research Use Only. Not for Use in Diagnostic Procedures.

[Antibody](#) | [ELISA Kits](#) | [Protein](#) | [Reagents](#)