

Contactin 5 Rabbit pAb

CatalogNo: YT1055

| Key Features

Host Species

- Rabbit

Reactivity

- Human,Rat,Mouse,

Applications

- IF,IHC,ELISA

MW

- 121kD (Calculated)

Isotype

- IgG

| Recommended Dilution Ratios

IF 1:200-1:1000

ELISA 1:20000

Not yet tested in other applications

| Storage

Storage*

-15°C to -25°C/1 year(Do not lower than -25°C)

Formulation

Liquid in PBS containing 50% glycerol, 0.5% BSA and 0.02% sodium azide.

| Basic Information

Clonality

Polyclonal

| Immunogen Information

Immunogen

The antiserum was produced against synthesized peptide derived from human CNTN5. AA range:891-940

Specificity

Contactin 5 Polyclonal Antibody detects endogenous levels of Contactin 5 protein.

| Target Information

Gene name CNTN5

Protein Name Contactin-5

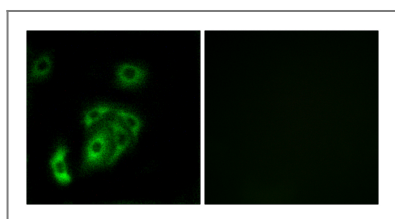
Organism	Gene ID	UniProt ID
Human	53942;	O94779;
Mouse		P68500;

Cellular Localization Cell membrane ; Lipid-anchor, GPI-anchor .

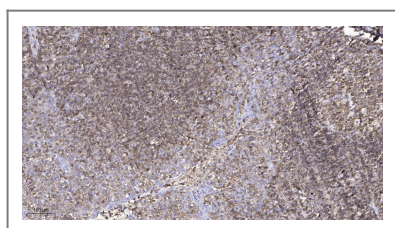
Tissue specificity Expressed in brain and kidney and at very low level in placenta. Not expressed in other tissues. In brain, it is highly expressed in the occipital lobe, amygdala, cerebral cortex, frontal lobe, thalamus and temporal lobe. Expressed at moderate level in the cerebellum, substantia nigra, putamen, medulla and hippocampus. Weakly expressed in the spinal cord and caudate nucleus. Weakly or not expressed in the corpus callosum.

Function Function:Contactins mediate cell surface interactions during nervous system development. Has some neurite outgrowth-promoting activity in the cerebral cortical neurons but not in hippocampal neurons. Probably involved in neuronal activity in the auditory system.,similarity:Belongs to the immunoglobulin superfamily. Contactin family.,similarity:Contains 4 fibronectin type-III domains.,similarity:Contains 6 Ig-like C2-type (immunoglobulin-like) domains.,tissue specificity:Expressed in brain and kidney and at very low level in placenta. Not expressed in other tissues. In brain, it is highly expressed in the occipital lobe, amygdala, cerebral cortex, frontal lobe, thalamus and temporal lobe. Expressed at moderate level in the cerebellum, substantia nigra, putamen, medulla and hippocampus. Weakly expressed in the spinal cord and caudate nucleus. Weakly or not expressed in the corpus callosum.,

| Validation Data



Immunofluorescence analysis of A549 cells, using CNTN5 Antibody. The picture on the right is blocked with the synthesized peptide.



Immunohistochemical analysis of paraffin-embedded human tonsil. 1, Antibody was diluted at 1:200(4° overnight). 2, Tris-EDTA,pH9.0 was used for antigen retrieval. 3,Secondary antibody was diluted at 1:200(room temperature, 45min).

| Contact information

Orders: order@immunoway.com
Support: tech@immunoway.com
Telephone: 877-594-3616 (Toll Free), 408-747-0185
Website: http://www.immunoway.com
Address: 2200 Ringwood Ave San Jose, CA 95131 USA



Please scan the QR code
to access additional
product information:
**Contactin 5 Rabbit
pAb**

For Research Use Only. Not for Use in Diagnostic Procedures.

[Antibody](#) | [ELISA Kits](#) | [Protein](#) | [Reagents](#)