

Connexin 45 Rabbit pAb

CatalogNo: YT1047 Orthogonal Validated 

Key Features

Host Species

- Rabbit

Reactivity

- Human, Mouse, Rat

Applications

- WB, ELISA

MW

- 45kD (Observed)

Isotype

- IgG

Storage

Storage* -15°C to -25°C/1 year (Do not lower than -25°C)

Formulation Liquid in PBS containing 50% glycerol, 0.5% BSA and 0.02% sodium azide.

Recommended Dilution Ratios

WB 1:500-1:2000

ELISA 1:40000

Not yet tested in other applications.

Basic Information

Clonality Polyclonal

Immunogen Information

Immunogen The antiserum was produced against synthesized peptide derived from human GJC1. AA range: 231-280

Specificity Connexin 45 Polyclonal Antibody detects endogenous levels of Connexin 45 protein.

Target Information

Gene name GJC1

Protein Name Gap junction gamma-1 protein

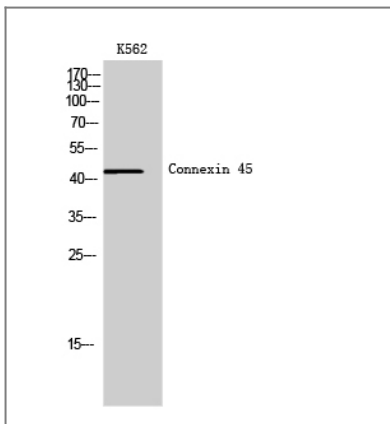
Organism	Gene ID	UniProt ID
Human	10052 ;	P36383 ;
Mouse	14615 ;	P28229 ;
Rat	266706 ;	A4GG66 ;

Cellular Localization Cell membrane; Multi-pass membrane protein. Cell junction, gap junction.

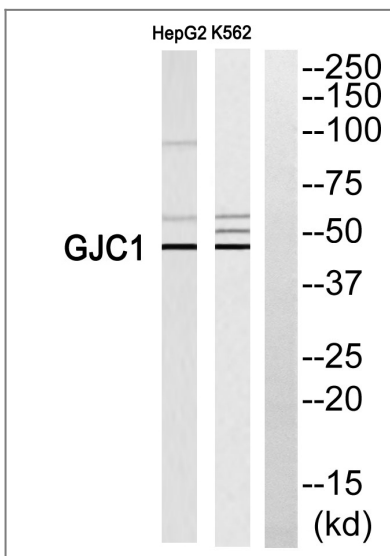
Tissue specificity Testis,Uterus,

Function Function:One gap junction consists of a cluster of closely packed pairs of transmembrane channels, the connexons, through which materials of low MW diffuse from one cell to a neighboring cell.,similarity:Belongs to the connexin family. Gamma-type subfamily.,subunit:A connexon is composed of a hexamer of connexins.,

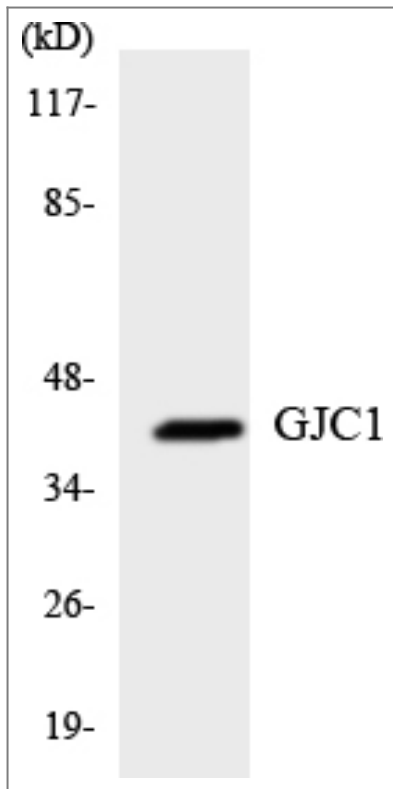
Validation Data



Western Blot analysis of K562 cells using Connexin 45 Polyclonal Antibody



Western blot analysis of GJC1 Antibody. The lane on the right is blocked with the GJC1 peptide.



Western blot analysis of the lysates from K562 cells using GJC1 antibody.

Contact information

Orders: order@immunoway.com
Support: tech@immunoway.com
Telephone: 877-594-3616 (Toll Free), 408-747-0185
Website: <http://www.immunoway.com>
Address: 2200 Ringwood Ave San Jose, CA 95131 USA



Please scan the QR code to access additional product information:
Connexin 45 Rabbit pAb

For Research Use Only. Not for Use in Diagnostic Procedures.

[Antibody](#) | [ELISA Kits](#) | [Protein](#) | [Reagents](#)