

Connexin 37 Rabbit pAb

CatalogNo: YT1043

Key Features

Host Species

- Rabbit

Reactivity

- Human, Mouse, Rat

Applications

- WB, ELISA

MW

- 37kD (Observed)

Isotype

- IgG

Recommended Dilution Ratios

WB 1:500-1:2000

ELISA 1:40000

Not yet tested in other applications.

Storage

Storage* -15°C to -25°C/1 year (Do not lower than -25°C)

Formulation Liquid in PBS containing 50% glycerol, 0.5% BSA and 0.02% sodium azide.

Basic Information

Clonality Polyclonal

Immunogen Information

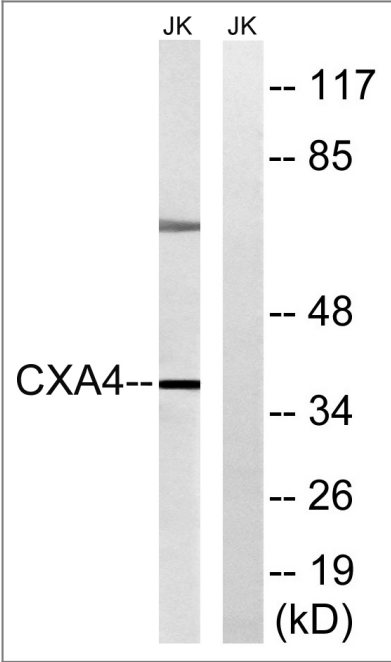
Immunogen The antiserum was produced against synthesized peptide derived from human GJA4. AA range: 81-130

Specificity Connexin 37 Polyclonal Antibody detects endogenous levels of Connexin 37 protein.

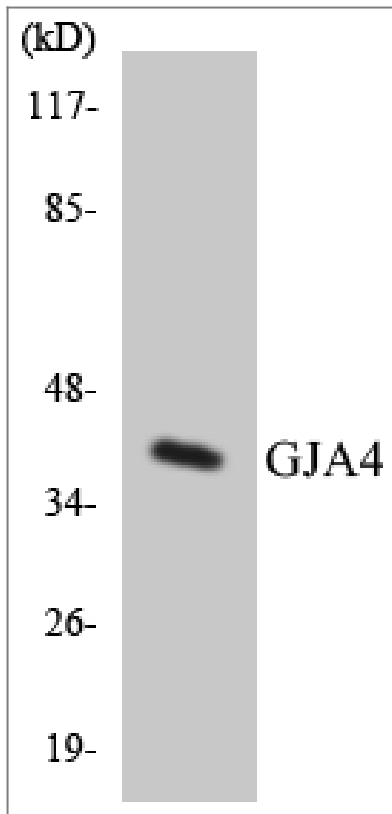
Target Information

Gene name	GJA4		
Protein Name	Gap junction alpha-4 protein		
	Organism	Gene ID	UniProt ID
	Human	2701 ;	P35212 ;
	Mouse	14612 ;	P28235 ;
	Rat	25655 ;	Q03190 ;
Cellular Localization	Cell membrane; Multi-pass membrane protein. Cell junction, gap junction.		
Tissue specificity	Expressed in multiple organs and tissues, including heart, uterus, ovary, and blood vessel endothelium.		
Function	Function:One gap junction consists of a cluster of closely packed pairs of transmembrane channels, the connexons, through which materials of low MW diffuse from one cell to a neighboring cell.,similarity:Belongs to the connexin family.,similarity:Belongs to the connexin family. Alpha-type (group II) subfamily.,subunit:A connexon is composed of a hexamer of connexins.,tissue specificity:Expressed in multiple organs and tissues, including heart, uterus, ovary, and blood vessel endothelium.,		

| Validation Data



Western blot analysis of lysates from Jurkat cells, using GJA4 Antibody. The lane on the right is blocked with the synthesized peptide.



Western blot analysis of the lysates from 293 cells using GJA4 antibody.

Contact information

Orders: order@immunoway.com
Support: tech@immunoway.com
Telephone: 877-594-3616 (Toll Free), 408-747-0185
Website: <http://www.immunoway.com>
Address: 2200 Ringwood Ave San Jose, CA 95131 USA



Please scan the QR code to access additional product information:
Connexin 37 Rabbit pAb

For Research Use Only. Not for Use in Diagnostic Procedures.

[Antibody](#) | [ELISA Kits](#) | [Protein](#) | [Reagents](#)