

## COL4A3 Rabbit pAb

CatalogNo: YT1026

### Key Features

#### Host Species

- Rabbit

#### Reactivity

- Human, Mouse

#### Applications

- IHC, IF, ELISA

#### MW

- 162kD (Calculated)

#### Isotype

- IgG

### Recommended Dilution Ratios

IHC 1:100-1:300

IF 1:200-1:1000

ELISA 1:5000

Not yet tested in other applications.

### Storage

#### Storage\*

-15°C to -25°C/1 year (Do not lower than -25°C)

#### Formulation

Liquid in PBS containing 50% glycerol, 0.5% BSA and 0.02% sodium azide.

### Basic Information

#### Clonality

Polyclonal

### Immunogen Information

#### Immunogen

The antiserum was produced against synthesized peptide derived from human Collagen IV alpha3. AA range: 801-850

#### Specificity

COL4A3 Polyclonal Antibody detects endogenous levels of COL4A3 protein.

### Target Information

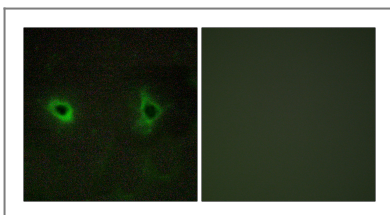
Gene name	COL4A3		
Protein Name	Collagen alpha-3(IV) chain		
	Organism	Gene ID	UniProt ID
	Human	<a href="#">1285</a> ;	<a href="#">Q01955</a> ;
	Mouse		<a href="#">Q9QZS0</a> ;
Cellular Localization	Secreted, extracellular space, extracellular matrix, basement membrane. Colocalizes with COL4A4 and COL4A5 in GBM, tubular basement membrane (TBM) and synaptic basal lamina (BL). .		
Tissue specificity	Alpha 3 and alpha 4 type IV collagens are colocalized and present in kidney, eye, basement membranes of lens capsule, cochlea, lung, skeletal muscle, aorta, synaptic fibers, fetal kidney and fetal lung. PubMed:8083201 reports similar levels of expression of alpha 3 and alpha 4 type IV collagens in kidney, but PubMed:7523402 reports that in kidney levels of alpha 3 type IV collagen are significantly lower than those of alpha 4 type IV collagen. According to PubMed:8083201, alpha 3 type IV collagen is not detected in heart, brain, placenta, liver, pancreas, extrasynaptic muscle fibers, endoneurial and perineurial nerves, fetal brain, fetal heart and fetal liver. According to PubMed:7523402, alpha 3 type IV collagen is strongly expressed in pancreas, neuroretina and calvaria and not expressed in adrenal, ileum and skin. Isoform 1 and isoform 3 are strongly expressed in kidney, lung, suprarenal capsule, muscle and spleen, in each of these tissues isoform 1 is more abundant than isoform 3. Isoform 1 and isoform 3 are expressed at low levels in artery, fat, pericardium and peripheral nerve, but not in placenta, mesangium, skin, pleura and cultured umbilical endothelial cells.		

## Function

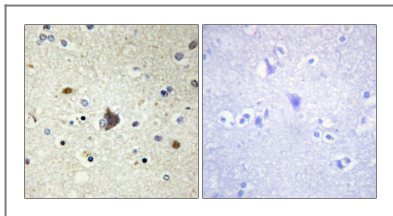
**Alternative products:**The majority of isoforms differ in the C-terminal part of the NC1 domain,**Disease:**Autoantibodies against the NC1 domain of alpha 3(IV) are found in Goodpasture syndrome, an autoimmune disease of lung and kidney.,**Disease:**Defects in COL4A3 are a cause of Alport syndrome autosomal recessive (APSAR) [MIM:203780]. APSAR is characterized by progressive glomerulonephritis, glomerular basement membrane defects, renal failure, sensorineural deafness and specific eye abnormalities (lenticonous and macular flecks). The disorder shows considerable heterogeneity in that families differ in the age of end-stage renal disease and the occurrence of deafness.,**Disease:**Defects in COL4A3 are a cause of benign familial hematuria (BFH) [MIM:141200]; also known as thin basement membrane nephropathy. BFH is characterized by persistent hematuria, an electron microscopically detectable thin glomerular basement membrane (GBM) and an autosomal dominant mode of inheritance. Renal function remains normal. In children, differentiation between BFH and AS can be difficult, because both disorders are manifested by persistent hematuria and thin GBM at that age.,**Domain:**Alpha chains of type IV collagen have a non-collagenous domain (NC1) at their C-terminus, frequent interruptions of the G-X-Y repeats in the long central triple-helical domain (which may cause flexibility in the triple helix), and a short N-terminal triple-helical 7S domain.,**Function:**Tumstatin, a cleavage fragment corresponding to the collagen alpha 3(IV) NC1 domain, possesses both anti-angiogenic and anti-tumor cell activity; these two anti-tumor properties may be regulated via RGD-independent ITGB3-mediated mechanisms.,**Function:**Type IV collagen is the major structural component of glomerular basement membranes (GBM), forming a 'chicken-wire' meshwork together with laminins, proteoglycans and entactin/nidogen.,**miscellaneous:**The epitopes recognized by the Goodpasture autoantibodies are sequestered within the NC1 hexamer of the type IV collagen network.,**PTM:**Isoform 2 contains an additional N-linked glycosylation site.,**PTM:**Phosphorylated by the Goodpasture antigen-binding protein/COL4A3BP.,**PTM:**Prolines at the third position of the tripeptide repeating unit (G-X-Y) are hydroxylated in some or all of the chains.,**PTM:**Type IV collagens contain numerous cysteine residues which are involved in inter- and intramolecular disulfide bonding. 12 of these, located in the NC1 domain, are conserved in all known type IV collagens.,**similarity:**Belongs to the type IV collagen family.,**similarity:**Contains 1 collagen IV NC1 (C-terminal non-collagenous) domain.,**subcellular location:**Colocalizes with COL4A4 and COL4A5 in GBM, tubular basement membrane (TBM) and synaptic basal lamina (BL).,**subunit:**There are six type IV collagen isoforms, alpha 1(IV)-alpha 6(IV), each of which can form a triple helix structure with 2 other chains to generate type IV collagen network. The alpha 3(IV) chain forms a triple helical protomer with alpha 4(IV) and alpha 5(IV); this triple helical structure dimerizes through NC1-NC1 domain interactions such that the alpha 3(IV), alpha 4(IV) and alpha 5(IV) chains of one protomer connect with the alpha 5(IV), alpha 4(IV) and alpha 3(IV) chains of the opposite protomer, respectively. Interacts with COL4A3BP AND ITGB3. Associates with LAMB2 at the neuromuscular junction and in GBM.,**tissue specificity:**Alpha 3 and alpha 4 type IV collagens are colocalized and present only in basement membranes of kidney, eye, cochlea, lung and brain.,

---

## | Validation Data



Immunofluorescence analysis of COS7 cells, using Collagen IV alpha3 Antibody. The picture on the right is blocked with the synthesized peptide.



Immunohistochemistry analysis of paraffin-embedded human brain tissue, using Collagen IV alpha3 Antibody. The picture on the right is blocked with the synthesized peptide.

## | Contact information

Orders: [order@immunoway.com](mailto:order@immunoway.com)  
Support: [tech@immunoway.com](mailto:tech@immunoway.com)  
Telephone: 877-594-3616 (Toll Free), 408-747-0185  
Website: <http://www.immunoway.com>  
Address: 2200 Ringwood Ave San Jose, CA 95131 USA



Please scan the QR code to access additional product information:

**COL4A3 Rabbit pAb**

---

For Research Use Only. Not for Use in Diagnostic Procedures.

[Antibody](#) | [ELISA Kits](#) | [Protein](#) | [Reagents](#)