

## COL14A1 Rabbit pAb

CatalogNo: YT1012

### Key Features

#### Host Species

- Rabbit

#### Reactivity

- Human, Mouse

#### Applications

- IHC, IF, ELISA

#### MW

- 194kD (Calculated)

#### Isotype

- IgG

### Recommended Dilution Ratios

**IHC 1:100-1:300**

**IF 1:200-1:1000**

**ELISA 1:40000**

**Not yet tested in other applications.**

### Storage

**Storage\*** -15°C to -25°C/1 year (Do not lower than -25°C)

**Formulation** Liquid in PBS containing 50% glycerol, 0.5% BSA and 0.02% sodium azide.

### Basic Information

**Clonality** Polyclonal

### Immunogen Information

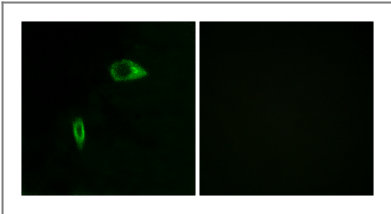
**Immunogen** The antiserum was produced against synthesized peptide derived from human N-terminal Collagen XIV alpha1. AA range: 71-120

**Specificity** COL14A1 Polyclonal Antibody detects endogenous levels of COL14A1 protein.

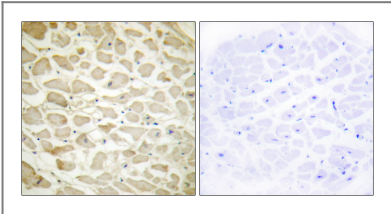
### Target Information

Gene name	COL14A1		
Protein Name	Collagen alpha-1(XIV) chain		
	Organism	Gene ID	UniProt ID
	Human	<a href="#">7373</a> ;	<a href="#">Q05707</a> ;
	Mouse		<a href="#">Q80X19</a> ;
Cellular Localization	Secreted, extracellular space, extracellular matrix .		
Tissue specificity	Brain,Liver,Muscle,PNS,Testis,		
Function	Function:Plays an adhesive role by integrating collagen bundles. It is probably associated with the surface of interstitial collagen fibrils via COL1. The COL2 domain may then serve as a rigid arm which sticks out from the fibril and protrudes the large N-terminal globular domain into the extracellular space, where it might interact with other matrix molecules or cell surface receptors.,PTM:Lysines at the third position of the tripeptide repeating unit (G-X-Y) are hydroxylated in all cases and bind carbohydrates.,PTM:May contain numerous cysteine residues involved in inter- and intramolecular disulfide bonding.,PTM:Prolines at the third position of the tripeptide repeating unit (G-X-Y) are hydroxylated in some or all of the chains.,similarity:Belongs to the fibril-associated collagens with interrupted helices (FACIT) family.,similarity:Contains 1 TSP N-terminal (TSPN) domain.,similarity:Contains 2 VWFA domains.,similarity:Contains 8 fibronectin type-III domains.,subunit:Homotrimer.,		

| Validation Data



Immunofluorescence analysis of HeLa cells, using Collagen XIV alpha1 Antibody. The picture on the right is blocked with the synthesized peptide.



Immunohistochemistry analysis of paraffin-embedded human heart tissue, using Collagen XIV alpha1 Antibody. The picture on the right is blocked with the synthesized peptide.

| Contact information

Orders: [order@immunoway.com](mailto:order@immunoway.com)  
Support: [tech@immunoway.com](mailto:tech@immunoway.com)  
Telephone: 877-594-3616 (Toll Free), 408-747-0185  
Website: <http://www.immunoway.com>  
Address: 2200 Ringwood Ave San Jose, CA 95131 USA



Please scan the QR code  
to access additional  
product information:  
**COL14A1 Rabbit  
pAb**

---

For Research Use Only. Not for Use in Diagnostic Procedures.

[Antibody](#) | [ELISA Kits](#) | [Protein](#) | [Reagents](#)