

## CNT2 Rabbit pAb

CatalogNo: YT1004

### Key Features

**Host Species**

- Rabbit

**Reactivity**

- Human, Mouse, Rat

**Applications**

- WB, IHC, IF, ELISA

**MW**

- 65kD (Observed)

**Isotype**

- IgG

### Recommended Dilution Ratios

**WB 1:500-1:2000****IHC 1:100-1:300****ELISA 1:10000****IF 1:50-200**

### Storage

**Storage\***

-15°C to -25°C/1 year (Do not lower than -25°C)

**Formulation**

Liquid in PBS containing 50% glycerol, 0.5% BSA and 0.02% sodium azide.

### Basic Information

**Clonality**

Polyclonal

### Immunogen Information

**Immunogen**

The antiserum was produced against synthesized peptide derived from human SLC28A2. AA range: 371-420

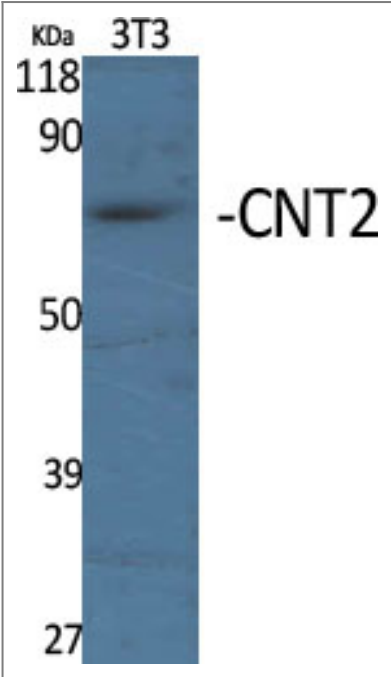
**Specificity**

CNT2 Polyclonal Antibody detects endogenous levels of CNT2 protein.

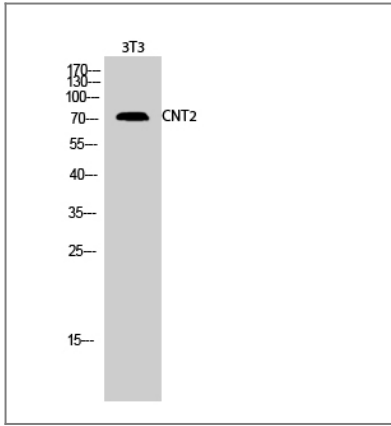
### Target Information

Gene name	SLC28A2		
Protein Name	Sodium/nucleoside cotransporter 2		
	Organism	Gene ID	UniProt ID
	Human	<a href="#">9153</a> ;	<a href="#">O43868</a> ;
	Mouse		<a href="#">O88627</a> ;
	Rat	<a href="#">60423</a> ;	<a href="#">Q62773</a> ;
Cellular Localization	Membrane ; Multi-pass membrane protein .		
Tissue specificity	Expressed in heart and skeletal muscle followed by liver, kidney, intestine, pancreas, placenta and brain (PubMed:9435697). Weak expression in lung (PubMed:9435697).		
Function	enzyme regulation:Inhibited by formycin B.,Function:Sodium-dependent and purine-selective transporter. Exhibits the transport characteristics of the nucleoside transport system cif or N1 subtype (N1/cif) (selective for purine nucleosides and uridine). Plays a critical role in specific uptake and salvage of purine nucleosides in kidney and other tissues.,similarity:Belongs to the concentrative nucleoside transporter (CNT) (TC 2.A.41) family.,tissue specificity:Expressed in heart and skeletal muscle followed by liver, kidney, intestine, pancreas, placenta and brain. Weak expression in lung.,		

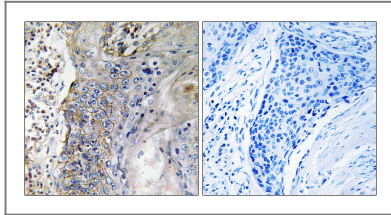
Validation Data



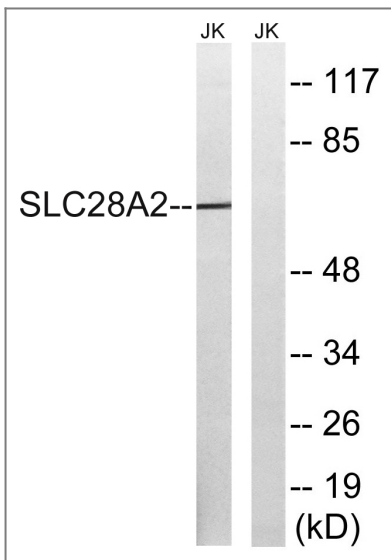
Western Blot analysis of various cells using CNT2 Polyclonal Antibody



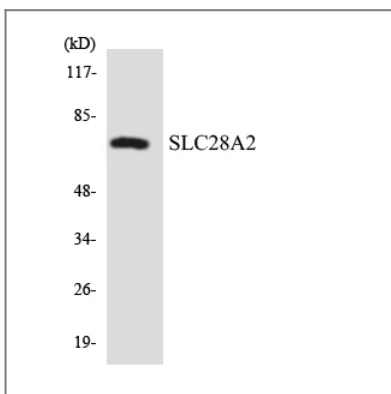
Western Blot analysis of 3T3 cells using CNT2 Polyclonal Antibody



Immunohistochemistry analysis of paraffin-embedded human lung carcinoma tissue, using SLC28A2 Antibody. The picture on the right is blocked with the synthesized peptide.



Western blot analysis of lysates from Jurkat cells, using SLC28A2 Antibody. The lane on the right is blocked with the synthesized peptide.



Western blot analysis of the lysates from HepG2 cells using SLC28A2 antibody.

## | Contact information

Orders: [order@immunoway.com](mailto:order@immunoway.com)  
Support: [tech@immunoway.com](mailto:tech@immunoway.com)  
Telephone: 877-594-3616 (Toll Free), 408-747-0185  
Website: <http://www.immunoway.com>  
Address: 2200 Ringwood Ave San Jose, CA 95131 USA



Please scan the QR code  
to access additional  
product information:  
**CNT2 Rabbit pAb**

---

For Research Use Only. Not for Use in Diagnostic Procedures.

[Antibody](#) | [ELISA Kits](#) | [Protein](#) | [Reagents](#)