

CNG-2 Rabbit pAb

CatalogNo: YT0997

Key Features

Host Species

- Rabbit

Reactivity

- Human, Mouse, Rat

Applications

- WB, IF, ELISA

MW

- 83kD (Observed)

Isotype

- IgG

Recommended Dilution Ratios

WB 1:500-1:2000

IF 1:200-1:1000

ELISA 1:40000

Not yet tested in other applications.

Storage

Storage*

-15°C to -25°C/1 year (Do not lower than -25°C)

Formulation

Liquid in PBS containing 50% glycerol, 0.5% BSA and 0.02% sodium azide.

Basic Information

Clonality

Polyclonal

Immunogen Information

Immunogen

The antiserum was produced against synthesized peptide derived from human CNGA2. AA range: 391-440

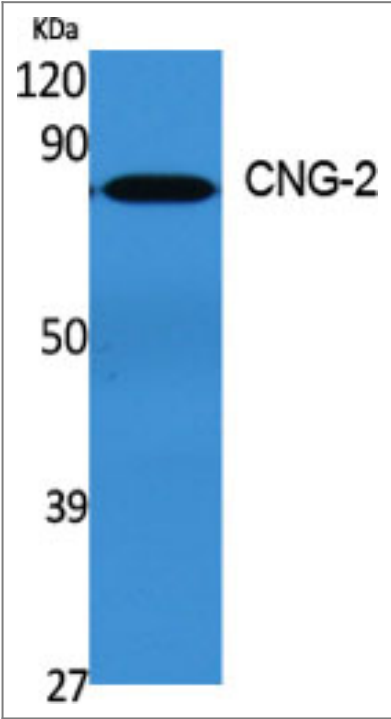
Specificity

CNG-2 Polyclonal Antibody detects endogenous levels of CNG-2 protein.

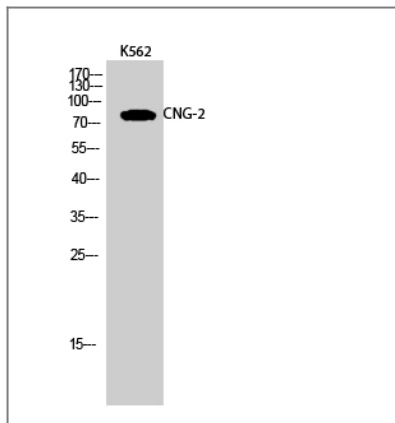
Target Information

Gene name	CNGA2		
Protein Name	Cyclic nucleotide-gated olfactory channel		
	Organism	Gene ID	UniProt ID
	Human	1260 ;	Q16280 ;
	Mouse	12789 ;	Q62398 ;
	Rat	25411 ;	Q00195 ;
Cellular Localization	Membrane; Multi-pass membrane protein.		
Tissue specificity	Testis,		
Function	Function:Odorant signal transduction is probably mediated by a G-protein coupled cascade using cAMP as second messenger. The olfactory channel can be shown to be activated by cyclic nucleotides which leads to a depolarization of olfactory sensory neurons.,similarity:Belongs to the cyclic nucleotide-gated cation channel (TC 1.A.1.5) family.,similarity:Contains 1 cyclic nucleotide-binding domain.,		

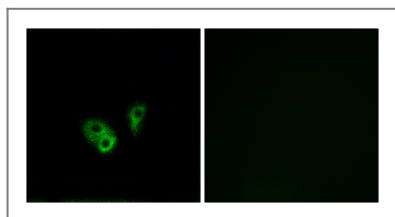
| Validation Data



Western Blot analysis of various cells using CNG-2 Polyclonal Antibody



Western Blot analysis of K562 cells using CNG-2 Polyclonal Antibody



Immunofluorescence analysis of A549 cells, using CNGA2 Antibody. The picture on the right is blocked with the synthesized peptide.

Contact information

Orders: order@immunoway.com
 Support: tech@immunoway.com
 Telephone: 877-594-3616 (Toll Free), 408-747-0185
 Website: <http://www.immunoway.com>
 Address: 2200 Ringwood Ave San Jose, CA 95131 USA



Please scan the QR code
 to access additional
 product information:
CNG-2 Rabbit pAb

For Research Use Only. Not for Use in Diagnostic Procedures.

[Antibody](#) | [ELISA Kits](#) | [Protein](#) | [Reagents](#)