

CNG-1 Rabbit pAb

CatalogNo: YT0995

Key Features

Host Species

- Rabbit

Reactivity

- Human, Mouse, Rat

Applications

- WB, ELISA

MW

- 80kD (Observed)

Isotype

- IgG

Recommended Dilution Ratios

WB 1:500-1:2000

ELISA 1:40000

Not yet tested in other applications.

Storage

Storage* -15°C to -25°C/1 year (Do not lower than -25°C)

Formulation Liquid in PBS containing 50% glycerol, 0.5% BSA and 0.02% sodium azide.

Basic Information

Clonality Polyclonal

Immunogen Information

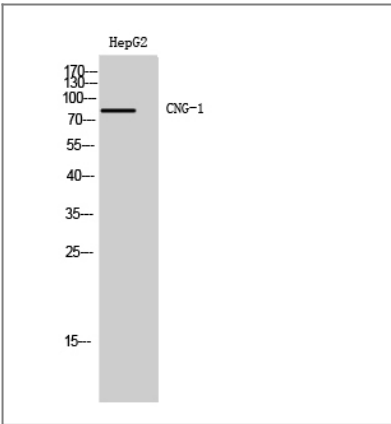
Immunogen The antiserum was produced against synthesized peptide derived from human CNGA1. AA range: 401-450

Specificity CNG-1 Polyclonal Antibody detects endogenous levels of CNG-1 protein.

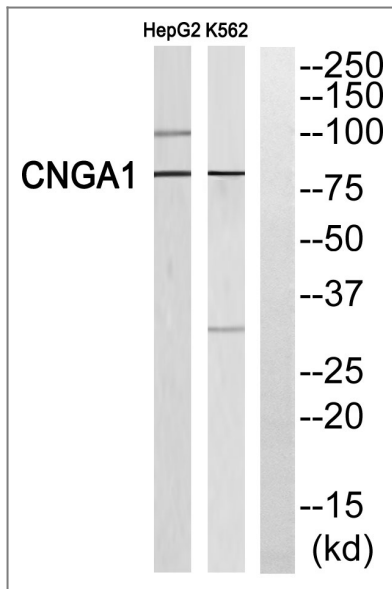
Target Information

Gene name	CNGA1		
Protein Name	cGMP-gated cation channel alpha-1		
	Organism	Gene ID	UniProt ID
	Human	1259 ;	P29973 ;
	Mouse	12788 ;	P29974 ;
	Rat	85259 ;	Q62927 ;
Cellular Localization	Cell membrane ; Multi-pass membrane protein .		
Tissue specificity	Rod cells in the retina.		
Function	<p>Caution:It is uncertain whether Met-1 or Met-5 is the initiator.,Disease:Defects in CNGA1 are a cause of retinitis pigmentosa autosomal recessive (ARRP) [MIM:268000]. RP leads to degeneration of retinal photoreceptor cells. Patients typically have night vision blindness and loss of midperipheral visual field. As their condition progresses, they lose their far peripheral visual field and eventually central vision as well.,Function:Visual signal transduction is mediated by a G-protein coupled cascade using cGMP as second messenger. This protein can be activated by cyclic GMP which leads to an opening of the cation channel and thereby causing a depolarization of rod photoreceptors.,online information:Retina International's Scientific Newsletter,similarity:Belongs to the cyclic nucleotide-gated cation channel (TC 1.A.1.5) family.,similarity:Contains 1 cyclic nucleotide-binding domain.,subunit:Homotetramer or higher oligomer. Forms heterooligomeric complex with CNG4.,tissue specificity:Rod cells in the retina.,</p>		

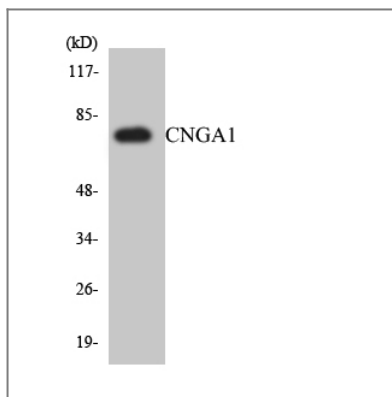
| Validation Data



Western Blot analysis of HepG2 cells using CNG-1 Polyclonal Antibody



Western blot analysis of CNGA1 Antibody. The lane on the right is blocked with the CNGA1 peptide.



Western blot analysis of the lysates from HepG2 cells using CNGA1 antibody.

Contact information

Orders: order@immunoway.com
 Support: tech@immunoway.com
 Telephone: 877-594-3616 (Toll Free), 408-747-0185
 Website: <http://www.immunoway.com>
 Address: 2200 Ringwood Ave San Jose, CA 95131 USA



Please scan the QR code to access additional product information:
CNG-1 Rabbit pAb

For Research Use Only. Not for Use in Diagnostic Procedures.

[Antibody](#) | [ELISA Kits](#) | [Protein](#) | [Reagents](#)