

## CMTM3 Rabbit pAb

CatalogNo: YT0985

### Key Features

#### Host Species

- Rabbit

#### Reactivity

- Human, Monkey

#### Applications

- WB, ELISA

#### MW

- 22kD (Observed)

#### Isotype

- IgG

### Recommended Dilution Ratios

**WB 1:500-1:2000**

**ELISA 1:40000**

**Not yet tested in other applications.**

### Storage

#### Storage\*

-15°C to -25°C/1 year (Do not lower than -25°C)

#### Formulation

Liquid in PBS containing 50% glycerol, 0.5% BSA and 0.02% sodium azide.

### Basic Information

#### Clonality

Polyclonal

### Immunogen Information

#### Immunogen

The antiserum was produced against synthesized peptide derived from human CKLF3. AA range: 1-50

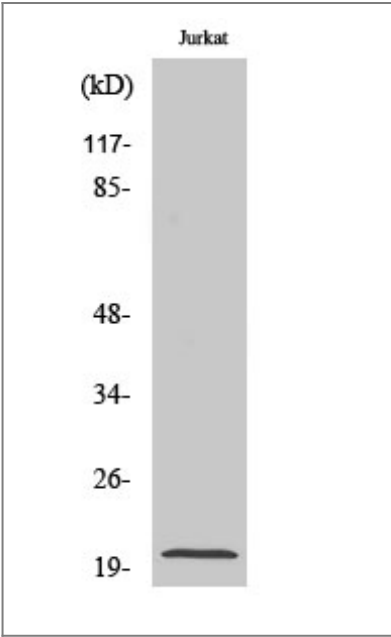
#### Specificity

CMTM3 Polyclonal Antibody detects endogenous levels of CMTM3 protein.

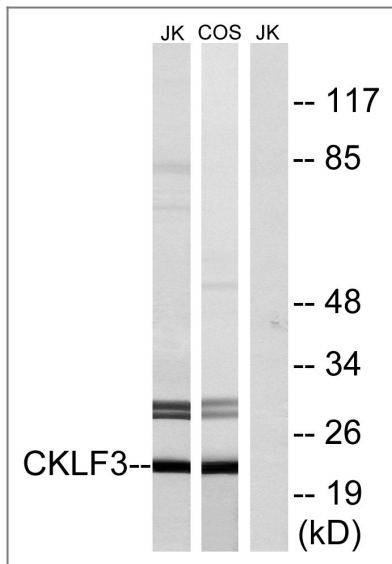
### Target Information

Gene name	CMTM3		
Protein Name	CKLF-like MARVEL transmembrane domain-containing protein 3		
	Organism	Gene ID	UniProt ID
	Human	<a href="#">123920</a> ;	<a href="#">Q96MX0</a> ;
	Mouse		<a href="#">Q99LJ5</a> ;
Cellular Localization	Membrane; Multi-pass membrane protein.		
Tissue specificity	Expressed in the leukocytes, placenta and testis.		
Function	similarity:Belongs to the chemokine-like factor family.,similarity:Contains 1 MARVEL domain.,tissue specificity:Expressed in the leukocytes, placenta and testis.,		

Validation Data



Western Blot analysis of various cells using CMTM3 Polyclonal Antibody diluted at 1:1000



Western blot analysis of lysates from Jurkat and COS cells, using CKLF3 Antibody. The lane on the right is blocked with the synthesized peptide.

## Contact information

Orders: [order@immunoway.com](mailto:order@immunoway.com)  
 Support: [tech@immunoway.com](mailto:tech@immunoway.com)  
 Telephone: 877-594-3616 (Toll Free), 408-747-0185  
 Website: <http://www.immunoway.com>  
 Address: 2200 Ringwood Ave San Jose, CA 95131 USA



Please scan the QR code to access additional product information:  
**CMTM3 Rabbit pAb**

For Research Use Only. Not for Use in Diagnostic Procedures.

[Antibody](#) | [ELISA Kits](#) | [Protein](#) | [Reagents](#)