

CMTM1 Rabbit pAb

CatalogNo: YT0983

Key Features

Host Species

- Rabbit

Reactivity

- Human

Applications

- IF,ELISA

MW

- 19kD (Calculated)

Isotype

- IgG

Recommended Dilution Ratios

IF 1:200-1:1000

ELISA 1:40000

Not yet tested in other applications

Storage

Storage* -15°C to -25°C/1 year(Do not lower than -25°C)

Formulation Liquid in PBS containing 50% glycerol, 0.5% BSA and 0.02% sodium azide.

Basic Information

Clonality Polyclonal

Immunogen Information

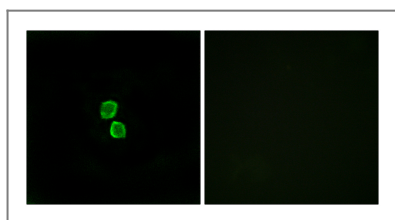
Immunogen The antiserum was produced against synthesized peptide derived from human CKLF1. AA range:120-169

Specificity CMTM1 Polyclonal Antibody detects endogenous levels of CMTM1 protein.

Target Information

Gene name	CMTM1		
Protein Name	CKLF-like MARVEL transmembrane domain-containing protein 1		
	Organism	Gene ID	UniProt ID
	Human	113540 ;	Q8IZ96 ;
Cellular Localization	Membrane; Multi-pass membrane protein.		
Tissue specificity	Highly expressed in testis.		
Function	similarity:Belongs to the chemokine-like factor family.,similarity:Contains 1 MARVEL domain.,tissue specificity:Highly expressed in testis.,		

Validation Data



Immunofluorescence analysis of MCF7 cells, using CKLF1 Antibody. The picture on the right is blocked with the synthesized peptide.

Contact information

Orders: order@immunoway.com
 Support: tech@immunoway.com
 Telephone: 877-594-3616 (Toll Free), 408-747-0185
 Website: <http://www.immunoway.com>
 Address: 2200 Ringwood Ave San Jose, CA 95131 USA



Please scan the QR code to access additional product information:
CMTM1 Rabbit pAb

For Research Use Only. Not for Use in Diagnostic Procedures.

[Antibody](#) | [ELISA Kits](#) | [Protein](#) | [Reagents](#)