

CLLD7 Rabbit pAb

CatalogNo: YT0974

Orthogonal Validated 

Key Features

Host Species

- Rabbit

Reactivity

- Human, Mouse

Applications

- WB, IHC, IF, ELISA

MW

- 58kD (Observed)

Isotype

- IgG

Recommended Dilution Ratios

WB 1:500-1:2000**IHC 1:100-1:300****ELISA 1:20000****IF 1:50-200**

Storage

Storage* -15°C to -25°C/1 year (Do not lower than -25°C)**Formulation** Liquid in PBS containing 50% glycerol, 0.5% BSA and 0.02% sodium azide.

Basic Information

Clonality Polyclonal

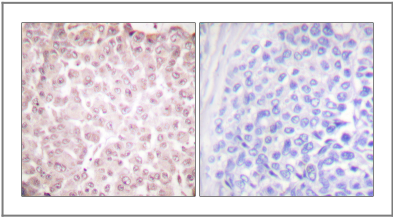
Immunogen Information

Immunogen The antiserum was produced against synthesized peptide derived from human RCBTB1. AA range: 251-300**Specificity** CLLD7 Polyclonal Antibody detects endogenous levels of CLLD7 protein.

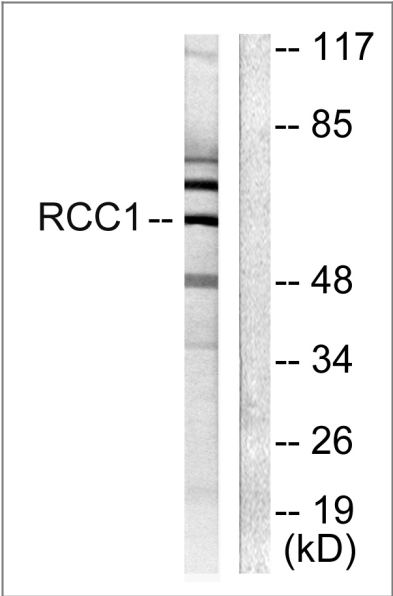
Target Information

Gene name	RCBTB1		
Protein Name	RCC1 and BTB domain-containing protein 1		
	Organism	Gene ID	UniProt ID
	Human	55213 ;	Q8NDN9 ;
	Mouse	71330 ;	Q6NXM2 ;
Cellular Localization	Nucleus .		
Tissue specificity	Ubiquitously expressed (PubMed:11306461, PubMed:27486781). In the retina, present in the nerve fiber layer and to a lesser extent in the inner and outer plexiform layers (at protein level) (PubMed:27486781).		
Function	Function:May be involved in cell cycle regulation by chromatin remodeling.,similarity:Contains 1 BTB (POZ) domain.,similarity:Contains 2 BTB (POZ) domains.,similarity:Contains 6 RCC1 repeats.,tissue specificity:Ubiquitously expressed.,		

| Validation Data



Immunohistochemistry analysis of paraffin-embedded human breast carcinoma tissue, using RCBTB1 Antibody. The picture on the right is blocked with the synthesized peptide.



Western blot analysis of lysates from LOVO cells, using RCBTB1 Antibody. The lane on the right is blocked with the synthesized peptide.

| Contact information

Orders: order@immunoway.com
Support: tech@immunoway.com
Telephone: 877-594-3616 (Toll Free), 408-747-0185
Website: http://www.immunoway.com
Address: 2200 Ringwood Ave San Jose, CA 95131 USA



Please scan the QR code
to access additional
product information:
CLLD7 Rabbit pAb

For Research Use Only. Not for Use in Diagnostic Procedures.

[Antibody](#) | [ELISA Kits](#) | [Protein](#) | [Reagents](#)