

## CLK4 Rabbit pAb

CatalogNo: YT0973

### Key Features

#### Host Species

- Rabbit

#### Reactivity

- Human, Mouse

#### Applications

- WB, IHC, IF, ELISA

#### MW

- 65kD (Observed)

#### Isotype

- IgG

### Recommended Dilution Ratios

**WB 1:500-1:2000**

**IHC 1:100-1:300**

**ELISA 1:10000**

**IF 1:50-200**

### Storage

#### Storage\*

-15°C to -25°C/1 year (Do not lower than -25°C)

#### Formulation

Liquid in PBS containing 50% glycerol, 0.5% BSA and 0.02% sodium azide.

### Basic Information

#### Clonality

Polyclonal

### Immunogen Information

#### Immunogen

The antiserum was produced against synthesized peptide derived from human CLK4. AA range: 101-150

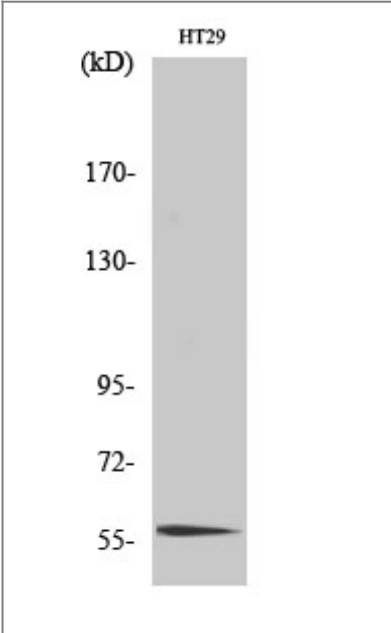
#### Specificity

CLK4 Polyclonal Antibody detects endogenous levels of CLK4 protein.

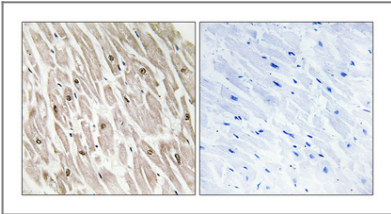
### Target Information

Gene name	CLK4		
Protein Name	Dual specificity protein kinase CLK4		
	Organism	Gene ID	UniProt ID
	Human	<a href="#">57396</a> ;	<a href="#">Q9HAZ1</a> ;
	Mouse	<a href="#">12750</a> ;	<a href="#">O35493</a> ;
Cellular Localization	Nucleus .		
Tissue specificity	Expressed in liver, kidney, heart, muscle, brain and endothelial cells.		
Function	Catalytic activity:ATP + a protein = ADP + a phosphoprotein.,Function:Phosphorylates serine- and arginine-rich (SR) proteins of the spliceosomal complex may be a constituent of a network of regulatory mechanisms that enable SR proteins to control RNA splicing. Phosphorylates serines, threonines and tyrosines. Required for the regulation of alternative splicing of MAPT/TAU.,PTM:Autophosphorylates on all three types of residues.,similarity:Belongs to the protein kinase superfamily. CMGC Ser/Thr protein kinase family. Lammer subfamily.,similarity:Contains 1 protein kinase domain.,subunit:Interacts with UBL5.,tissue specificity:Expressed in liver, kidney, heart, muscle and brain.,		

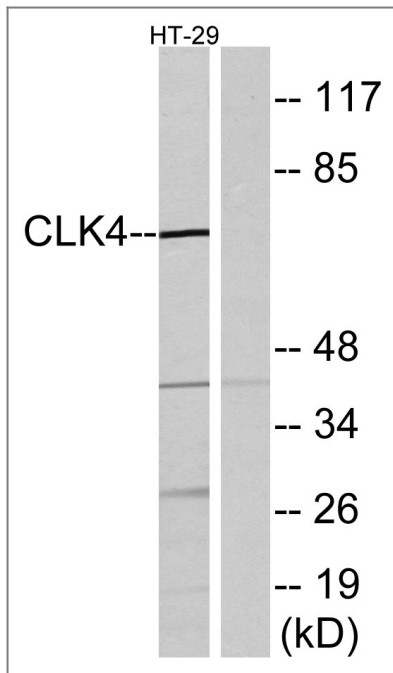
Validation Data



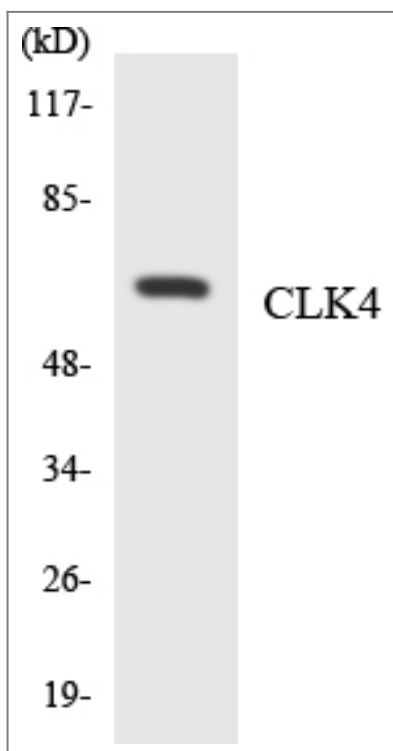
Western Blot analysis of various cells using CLK4 Polyclonal Antibody cells nucleus extracted by Minute TM Cytoplasmic and Nuclear Fractionation kit (SC-003,Inventbiotech,MN,USA).



Immunohistochemical analysis of paraffin-embedded Human heart. Antibody was diluted at 1:100(4° overnight). High-pressure and temperature Tris-EDTA,pH8.0 was used for antigen retrieval. Negative contrl (right) obtaned from antibody was pre-absorbed by immunogen peptide.



Western blot analysis of lysates from HT-29 cells, using CLK4 Antibody. The lane on the right is blocked with the synthesized peptide.



Western blot analysis of the lysates from HeLa cells using CLK4 antibody.

## Contact information

Orders: [order@immunoway.com](mailto:order@immunoway.com)  
 Support: [tech@immunoway.com](mailto:tech@immunoway.com)  
 Telephone: 877-594-3616 (Toll Free), 408-747-0185  
 Website: <http://www.immunoway.com>  
 Address: 2200 Ringwood Ave San Jose, CA 95131 USA



Please scan the QR code  
to access additional  
product information:  
**CLK4 Rabbit pAb**

