

## CLIC3 Rabbit pAb

CatalogNo: YT0964

### | Key Features

#### Host Species

- Rabbit

#### Reactivity

- Human, Mouse

#### Applications

- WB, ELISA

#### MW

- 27kD (Observed)

#### Isotype

- IgG

### | Recommended Dilution Ratios

**WB 1:500-1:2000**

**ELISA 1:40000**

**Not yet tested in other applications.**

### | Storage

**Storage\*** -15°C to -25°C/1 year (Do not lower than -25°C)

**Formulation** Liquid in PBS containing 50% glycerol, 0.5% BSA and 0.02% sodium azide.

### | Basic Information

**Clonality** Polyclonal

### | Immunogen Information

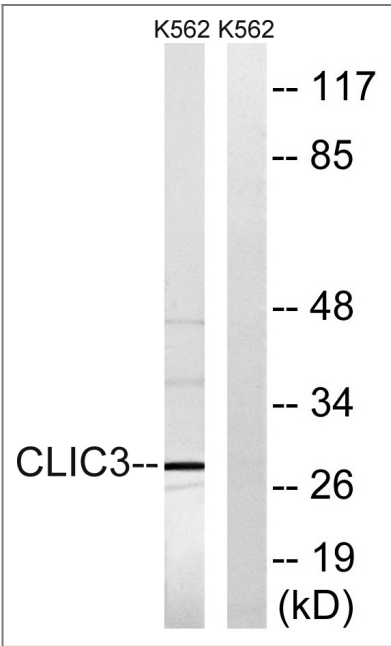
**Immunogen** The antiserum was produced against synthesized peptide derived from human CLIC3. AA range: 21-70

**Specificity** CLIC3 Polyclonal Antibody detects endogenous levels of CLIC3 protein.

### | Target Information

Gene name	CLIC3		
Protein Name	Chloride intracellular channel protein 3		
	Organism	Gene ID	UniProt ID
	Human	<a href="#">9022</a> ;	<a href="#">O95833</a> ;
	Mouse		<a href="#">Q9D7P7</a> ;
Cellular Localization	Nucleus. Membrane; Single-pass membrane protein. Cytoplasm. Predominantly nuclear. Some protein was found in the cytoplasm. Exists both as soluble cytoplasmic protein and as membrane protein with probably a single transmembrane domain (By similarity). .		
Tissue specificity	Detected in placenta (at protein level). Widely expressed. High expression is found in placenta followed by lung and heart. Low expression in skeletal muscle, kidney and pancreas.		
Function	Domain:Members of this family may change from a globular, soluble state to a state where the N-terminal domain is inserted into the membrane and functions as chloride channel. A conformation change of the N-terminal domain is thought to expose hydrophobic surfaces that trigger membrane insertion.,Function:Can insert into membranes and form chloride ion channels. May participate in cellular growth control.,similarity:Belongs to the chloride channel CLIC family.,similarity:Contains 1 GST C-terminal domain.,similarity:Contains 1 GST N-terminal domain.,subcellular location:Predominantly nuclear. Some protein was found in the cytoplasm. Exists both as soluble cytoplasmic protein and as membrane protein with probably a single transmembrane domain.,subunit:Associated with the C-terminal of ERK7.,tissue specificity:Detected in placenta (at protein level). Widely expressed. High expression is found in placenta followed by lung and heart. Low expression in skeletal muscle, kidney and pancreas.,		

| Validation Data



Western blot analysis of lysates from K562 cells, using CLIC3 Antibody. The lane on the right is blocked with the synthesized peptide.

## | Contact information

Orders: order@immunoway.com  
Support: tech@immunoway.com  
Telephone: 877-594-3616 (Toll Free), 408-747-0185  
Website: <http://www.immunoway.com>  
Address: 2200 Ringwood Ave San Jose, CA 95131 USA



Please scan the QR code  
to access additional  
product information:  
**CLIC3 Rabbit pAb**

---

For Research Use Only. Not for Use in Diagnostic Procedures.

[Antibody](#) | [ELISA Kits](#) | [Protein](#) | [Reagents](#)