

Citron Rabbit pAb

CatalogNo: YT0931 Orthogonal Validated 

Key Features

Host Species

- Rabbit

Reactivity

- Human, Mouse

Applications

- IHC, IF, ELISA

MW

- 231kD (Calculated)

Isotype

- IgG

Storage

Storage* -15°C to -25°C/1 year (Do not lower than -25°C)

Formulation Liquid in PBS containing 50% glycerol, 0.5% BSA and 0.02% sodium azide.

Recommended Dilution Ratios

IHC 1:100-1:300

ELISA 1:40000

IF 1:50-200

Basic Information

Clonality Polyclonal

Immunogen Information

Immunogen The antiserum was produced against synthesized peptide derived from human CTRO. AA range:1011-1060

Specificity Citron Polyclonal Antibody detects endogenous levels of Citron protein.

Target Information

Gene name CIT
Protein Name Citron Rho-interacting kinase

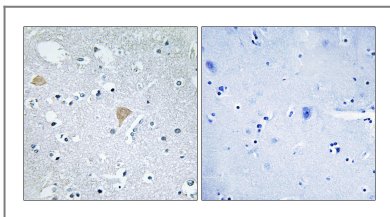
Organism	Gene ID	UniProt ID
Human	11113 ;	O14578 ;
Mouse		P49025 ;

Cellular Localization Cytoplasm .

Tissue specificity Brain,Epithelium,

Function Catalytic activity:ATP + a protein = ADP + a phosphoprotein.,Function:Required for KIF14 localization to the central spindle and midbody. May play a role in cytokinesis. Putative RHO/RAC effector that binds to the GTP-bound forms of RHO and RAC1. It probably binds p21 with a tighter specificity in vivo. Dual specificity protein kinase activity catalyzing autophosphorylation and phosphorylation of exogenous substrates on both serine/threonine and tyrosine residues. Plays an important role in the regulation of cytokinesis and the development of the central nervous system.,similarity:Belongs to the protein kinase superfamily.,similarity:Belongs to the protein kinase superfamily. AGC Ser/Thr protein kinase family.,similarity:Contains 1 AGC-kinase C-terminal domain.,similarity:Contains 1 CNH domain.,similarity:Contains 1 PH domain.,similarity:Contains 1 phorbol-ester/DAG-type zinc finger.,similarity:Contains 1 protein kinase domain.,subunit:Directly interacts with KIF14 depending on the activation state (stronger interaction with the kinase-dead form). Homodimer.,

Validation Data



Immunohistochemistry analysis of paraffin-embedded human brain tissue, using CTRO Antibody. The picture on the right is blocked with the synthesized peptide.

Contact information

Orders: order@immunoway.com
Support: tech@immunoway.com
Telephone: 877-594-3616 (Toll Free), 408-747-0185
Website: <http://www.immunoway.com>
Address: 2200 Ringwood Ave San Jose, CA 95131 USA



Please scan the QR code to access additional product information:
Citron Rabbit pAb

